

2025 Accommodation

Boston, USA



Homestay

Our homestays are carefully selected and offer students the opportunity to learn more about American culture and New England life in a comfortable setting.



welcoming & friendly
atmosphere



single and twin
room options



good & reliable
transport links



Key Information

- Carefully selected by our Accommodation Coordinator and visited on a regular basis
- Choice of single rooms (or twin rooms if two students book for the same time period) with bed and breakfast or half-board
- Bed linen and towels provided
- Laundry facilities available in the home or at local laundromats for about US \$5/\$6
- Commute times from homestays range between 45 - 65 minutes
- Good and reliable public transportation
- **US \$150 placement fee for all accommodation**



Private Bathroom Homestay option

Some homestays offer a private bathroom (either en-suite or for sole use). Availability is limited—please contact us if you're interested.

Homestay Prices

	Homestay Weekly Rates (per person per week)	Extra Night Rates (per person per night)**
	2025	2025
Single room, B&B	US \$310	US \$75
Single room, Half Board	US \$390	US \$90
Single room, Full Board	US \$440	US \$95
Twin room*, B&B	US \$265	US \$65
Twin room*, Half Board	US \$340	US \$80
Twin room*, Full Board	US \$390	US \$85
Supplemental Rates (per person per week)	2025	
Summer Supplement (Jun 15 – Aug 24)	US \$40	
Special Diets B&B / HB	US \$ 25 / 50	
Christmas Supplement (Dec 21 - Jan 4, 2026)	US \$60	
Executive Supplement	US \$90	
Under 18 Supplement	US \$20	

Key

B&B = Bed and Breakfast (Breakfast only)

HB = Half Board (Breakfast and Dinner)

*For students booking together with the same arrival and departure dates.

**Extra nights are subject to availability. Please check with the school before booking flights. No extra nights during the Summertime.



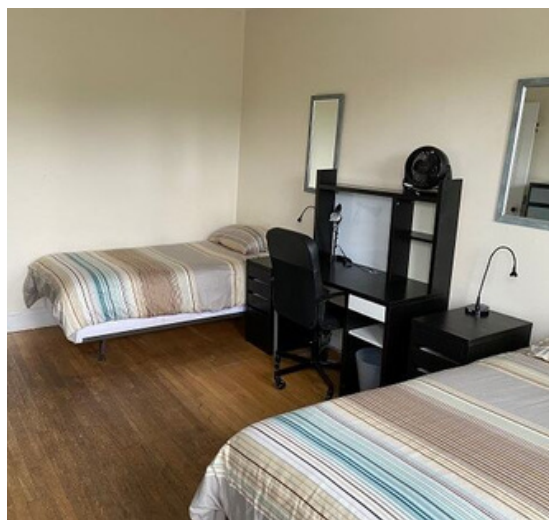
Residence

All residences are subject to availability

This option is more suitable for an independent student who is looking for a self-catering accommodation at an affordable price. All students must be 18 or older, unless specified otherwise.

ESL Townhouse

85 Park Dr, Boston, MA 02215



Location

Fenway area of Boston. 30 minutes by train to LSI Boston and to popular city sights.

Minimum age

18

Rooms

Single or twins

Private Bathroom

No, shared bathrooms

Meals

Self-catering

Facilities

Community kitchen, TV, telephone, free Wi-Fi, laundry.

Availability

Year round; fills up in Summer. Early request recommended. Saturday to Saturday only; no extra nights.

18 weeks minimum stay.

Other

ESL Townhouse requires students to sign a lease for the entire apartment, not per bed. A move-in fee of \$300 and the first and last month's rent s required to secure an apartment. A refundable security deposit (equal to one month of rent) is due by one week prior to the start date. Rent is due each four weeks. All payments will be made directly to the residence and not LSI.

Cleaning service only available prior to arrival. Linen and towels provided. Electricity is charged separately.'

Late night arrival fee of US \$50 for transportation scheduled to arrive in Boston between 9.30pm and 11pm. Fee of US \$100 for transportation scheduled to arrive in Boston after 11pm.

Cancellation policy

Move in fee and first month's rent are non-refundable. Less than 60 days notice: the last month's rent is also non-refundable. Cancellation on start date and later: no refunds.

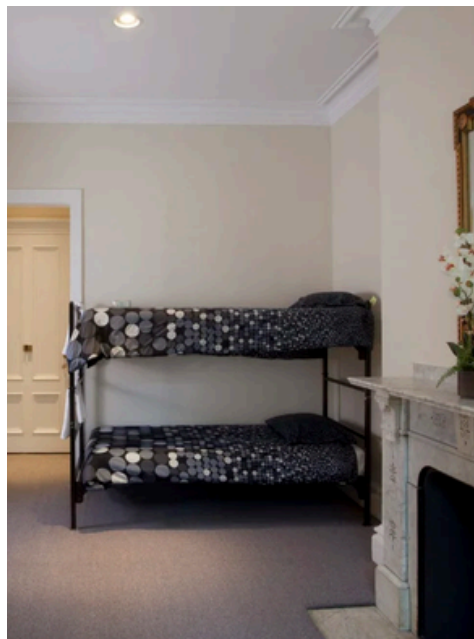
Prices (per person per week)	2025
Studio	US \$695
2-Bedroom Apartment (up to 3 beds)	US \$700

LSI reserves the right to replace residence options with similar alternatives subject to availability.

For more information please contact LSI Boston E: bos@lsi.edu T: +1 617 542 3600

International Guest House (IGH)

237 Beacon St, Boston, MA 02116



Location

Located just 15 minutes away from LSI Boston by public transport, or a scenic 30 minute walk through the paths of Boston Public Garden.

Minimum age

16+

Rooms

Single and shared rooms available.

All rooms are fully furnished and equipped with a dresser, desk and refrigerator. Air conditioning available during the summer.

Private Bathroom

Yes. Bathrooms are cleaned daily, towels and linens are changed weekly.

Meals

Breakfast and dinner are provided daily, with optional lunch.

Check-in & Check-out

Check-in is from 2 to 5 pm. Check-out time is by 11 am.

Utilities

Rates include Wi-Fi, access to study rooms, TV lounges, and laundry facilities.

Availability

Summer only, from June, 1st to August, 10th

Booking

A Refundable US\$ 200 Room & Key Deposit is collected upon arrival in cash.

Cancellations made at least 2 weeks prior to arrival will incur in no penalty. Cancellations made within 2 weeks of arrival will be charged a cancellation fee equivalent to one week at the booked rate.

2025 Prices (per person per week)

Single Room, breakfast and dinner included	US\$ 1,050 per person per week
Shared Room*, breakfast and dinner included	US\$ 700 per person per week

***Shared rooms are assigned by gender, but 16 and 17-year-olds may share room with adult students of the same gender.**

Independent Accommodation Suggestions:

June Homes

Multiple locations



Location

Various locations in numerous neighbourhoods. 30-45 minutes to LSI Boston by public transportation

Minimum age

18

Rooms

Private rooms, in an apartment shared with 2 roommates

Private Bathroom

No, only shared bathroom options are available.

Move in dates

Move-in on 1st of month, move-out on last day of month

Utilities

All utilities are included in rent costs, including internet.

Meals

Self-catering

Availability

31-day minimum stay, but stays of 4-11 weeks can also be considered depending on availability

Booking

Students book directly with June Homes

2025 Prices (per person per week)

Single Room, Shared Bathroom	Between \$315 and \$575 per week*
Studio Apartment, Private Bathroom	Between \$560 and \$1030 per week*

*depending on the type of room and bathroom chosen.

Students should browse <https://junehomes.com/residences/boston-ma> to see all of the various options.