

# 2025 Accommodation

## Zurich, Switzerland





# Homestay

Our homestays are carefully selected and offer students the opportunity to learn more about Swiss culture in a comfortable setting while studying German in Zurich.



welcoming & friendly  
atmosphere



single and twin  
room options



good & reliable  
transport links



## Key Information

- Carefully selected by our Accommodation Officers and visited on a regular basis
- Choice of single rooms (or twin rooms if two students book for the same time period) with bed and breakfast or half-board
- All bed linen and towels provided
- Most host families will wash the students laundry once a week for no additional cost or will suggest nearby laundry facilities
- Good and reliable transport links
- Arrival and departures Sunday to Saturday
- **CHF 135 placement fee for all accommodation**



## Executive Homestay Option (Private Bathroom)

Executive Homestays are often of a higher standard than other home stay accommodation. They are evaluated in terms of décor and have a private bathroom (en-suite or sole use) and/or extra facilities such as a television in the bedroom.

### Homestay Prices

	Homestay Weekly Rates (per person per week)	Extra Night Rates (per person per night)**
Single room, B&B	CHF 375	CHF 55
Single room, Half Board	CHF 470	CHF 70
Twin room*, B&B	CHF 285	
Twin room*, Half Board	CHF 365	
Supplemental Rates (per person per week)		
Executive Supplement, Single**	CHF 90	
Executive Supplement, Twin*	CHF 70	

#### Key

B&B = Bed and Breakfast (Breakfast only, no kitchen access),

HB = Half Board (Breakfast and Dinner)

\* For students booking together with the same arrival and departure dates

\*\* Subject to availability. Please check with the school before booking flight tickets.

**For cancellations made 4 weeks or more prior to the course start date, all accommodation fees are refunded, less any penalties incurred by LSI from 3rd party suppliers.**

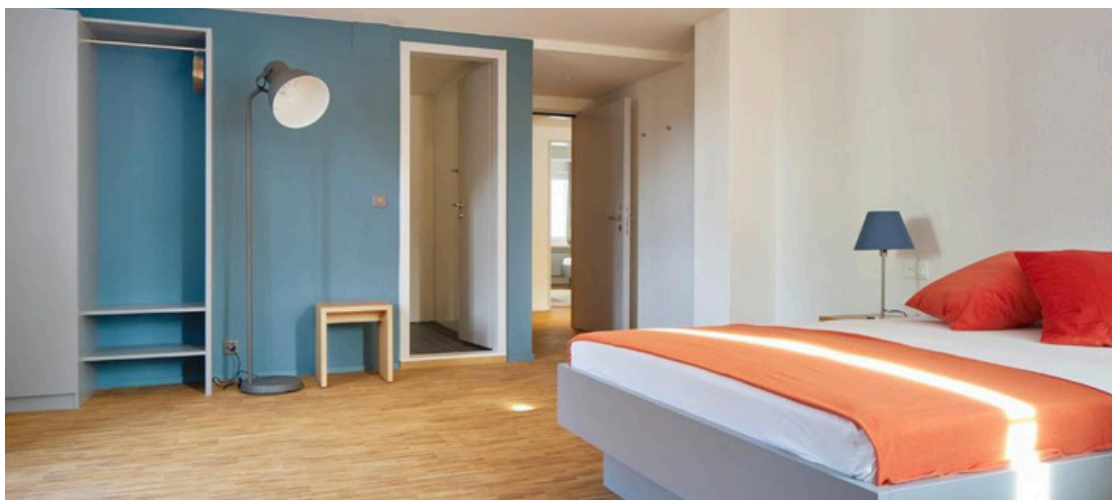


# Residences

These options are more suitable for an independent student who is looking for a clean and basic accommodation at an affordable price. All students must be 18 or older unless specified otherwise.

LSI Zurich can advise on residences and availability but students are required by Swiss law to make bookings by themselves directly with the accommodation provider.

## Josephine's Guesthouse for Women



### Location

5 minute walk to the city centre and 15 minutes by tram to LSI Zurich.

### Minimum age

18

### Rooms

Single, single with balcony, single with queen-sized bed, large single with queen-size bed, and twin rooms available.

### Private Bathroom

Yes, en-suite

### Meals

Vegetarian Breakfast included in the price

### Availability

Year-round

### Facilities

Wi-Fi, community kitchen, refrigerator, common living room, rooftop terrace, laundry facilities.

### Other

Every two weeks housekeeping and bed linen and towels changed. Reception open during office hours and nightly security available.

### Cancellation Policy

Free cancellation 15 days before arrival. For cancellations less than 15 days before arrival 7 nights will be charged.

### 2025 Prices (per person per night when staying minimum 14 nights)

Single room	<i>from</i> CHF 60
Single room with queen-sized bed	<i>from</i> CHF 75
Large single room with queen-sized bed	<i>from</i> CHF 85
Large Twin bedded room	<i>from</i> CHF 100



## Maximilianeum 13



### Location

5 minute walk to the city centre and 10 minutes by tram to LSI Zurich.

### Minimum age

18

### Rooms

Single rooms with washbasins and single rooms with washbasins and balconies available

### Private Bathroom

No, shared on each floor

### Meals

Self-catering; breakfast and dinner from Monday - Friday can be provided for an additional fee.

### Availability

Year-round

### Facilities

Wi-Fi, community kitchen, TV room, study room, music room

Laundry facilities (coin operated and not included in the prices)

### Other

Monthly additional cost of CHF 50 for short stays.

Bed linen provided for an extra cost of CHF 50.

Final cleaning before departure charged for CHF 40.

### 2025 Prices (per person per month)

Single room with washbasin	from CHF 600/740
----------------------------	------------------

Single room with washbasin and balcony	from CHF 810
--	--------------

## Oldtown Hostel Otter



### Location

Located in the heart of the old town and 10 minutes by foot to LSI Zurich.

### Minimum age

18

### Rooms

Double, twin, and six-bed rooms available

### Private Bathroom

No, shared on each floor

### Meals

Breakfast not available at the hostel. Free coffee and tea in the common room available 24 hours.

### Availability

Year-round, minimum 2 night stay.

### Facilities

Wi-Fi, bedsheets provided, community kitchen.

### Other

Check-in after 12pm; check-out before 10am. Quiet time after 10pm in the dorms. No alcohol in the dorms. Free luggage storage on the day of departure.

### Cancellation Policy

A deposit fee of 25% of the costs will be charged directly after booking. Cancellation 2 days before arrival will have no further costs deducted. Charges of 100% apply on cancellations for less than 1 day before arrival.

### Prices (per person per night)

6-bedroom eco mix	<i>from</i> CHF 50
3-bed male	<i>from</i> CHF 55
3-bed female	<i>from</i> CHF 55
Double room	<i>from</i> CHF 105

## Jugendherberge - Zurich Youth Hostel



### Location

Located near the lake Zurich and 25 minutes by train and bus to LSI Zurich.

### Minimum age

18 and over ; 14 - 17 year olds only with written permission from parents

### Rooms

Single, double, and quadruple rooms and six-bedroom dormitories available.

### Private Bathroom

No, shared bathrooms except for single rooms

### Meals

Breakfast included in the price.

### Availability

Year-round.

### Facilities

Wi-Fi, kiosk, lounge area, TV, billiard, table tennis, air hockey, courtyard, bar, storing room for bicycles, seminar rooms, parking zones, laundry facilities.

### Other

Bed linen provided, towels only in double rooms provided otherwise available at the reception for an additional fee.

### 2025 Prices (per person per night)

Single room	<i>from</i> CHF 91
Double room	<i>from</i> CHF 140
Bed in quadruple room	<i>from</i> CHF 60
Bed in six-bed room	<i>from</i> CHF 53



# Hotels

LSI Zurich can advise on hotels and availability but students are required by Swiss law to make bookings by themselves directly with the accommodation provider.

## Sorell Hotel Seefeld



### Location

Many of the city's sights and attraction's are within walking distance. 10 minutes by tram to the city centre and 5 minute walk to LSI Zurich.

### Minimum age

18

### Rooms

Standard single and twin rooms available

### Private Bathroom

Yes, en-suite

### Meals

Breakfast included in the price

### Availability

Year-round

### Facilities

Wi-Fi, telephone, TV, radio, modem/fax connection, safe, mini bar, air conditioning, fitness centre, wellness centre, terrace, parking zones.

### Other

Daily housekeeping, bed linens and towels provided and changed weekly.

### Cancellation Policy

Free cancellation on most rooms.

### 2025 Prices (per person per night)

Single room	<i>from</i> CHF 250
Twin room	<i>from</i> CHF 315



## Hotel Adler



### [Location](#)

Within walking distance to the main sights of the old town. 5 minute walk to the famous business centre 'Bahnhofstrasse' and the lake. 10 minutes by tram to LSI Zurich.

### [Minimum age](#)

18

### [Rooms](#)

Single and double rooms and suites

### [Private Bathroom](#)

Yes, en-suite

### [Meals](#)

Breakfast included in the price

### [Availability](#)

Year-round

### [Facilities](#)

Wi-Fi, free city map, telephone, TV, safe, mini bar, air conditioning, refrigerator, terrace, restaurant.

### [Other](#)

Daily housekeeping, bed linens and towels provided.

### 2025 Prices (per person per night)

Single room	<i>from</i> CHF 166
Superior Single room	<i>from</i> CHF 189
Double room	<i>from</i> CHF 209

## The Ibis Budget Zurich City West Hotel



### [Location](#)

15 minutes by train to the Zurich airport and to the city centre. 25 minutes by train to LSI Zurich.

### [Minimum age](#)

18

### [Rooms](#)

Twin, double, and triple rooms available

### [Private Bathroom](#)

Yes, en-suite

### [Meals](#)

Self-catering; breakfast available at an extra cost

### [Availability](#)

Year-round

### [Facilities](#)

Wi-Fi, TV, parking zones, vending machine, air conditioning, laundry facilities.

### [Other](#)

Daily housekeeping, linens and towels provided.

### 2025 Prices (per person per night)

All room types

*from* CHF 121



## Hotel Marta



### [Location](#)

Located in the old town near the main railway station. 10 minutes by tram to LSI Zurich.

### [Minimum age](#)

18

### [Rooms](#)

Small, medium and large rooms, and panorama rooms available

### [Private Bathroom](#)

Yes, en-suite

### [Meals](#)

Breakfast included in the price

### [Availability](#)

Year-round

### [Facilities](#)

Wi-Fi, TV, ventilator, fitness centre, coffee bar, roof terrace, lounge room, laundry facilities.

### [Other](#)

Housekeeping service available on demand.

### 2025 Prices (per person per night)

Small room	<i>from</i> CHF 140
Medium room	<i>from</i> CHF 145
Large room	<i>from</i> CHF 165
Street room	<i>from</i> CHF 133