

LSI London Hampstead Club 50+

13 Lyndhurst Terrace, London NW3 5QA

Contact us on: +44 20 7794 8111 studyinlondon@lsi.edu or ham@lsi.edu

At LSI, we welcome mature students of all ages who are ‘young at heart’ on all our courses throughout the year. In addition, 4 times a year we run the 2-week long Club 50+ Programme which combines our regular English language tuition with a unique activity programme specifically designed around the interests of our more mature students. As well as visiting some of London’s most well-known sight-seeing spots, students will have a traditional English “High Tea” at London’s famous Ritz Hotel* and see a West-End Musical. We are also happy to help students plan their free time activities in and around London.

What is included?

- Lessons: 9:00 – 13:00 in a class of international students (average age: 24).
- Activities: 3 afternoon or evening activities plus 1 Saturday excursion accompanied by a teacher
- Accommodation: Homestay or Hotel accommodation.
- Number of participants: 3+

Course Dates:

- Sunday 15th February – 1st March 2009
- Sunday 19th April – 3rd May 2009
- Sunday 6th September – 20th September 2009
- Sunday 6th December – 20th December 2009

Location

The course is based at our school in Hampstead, a quiet, leafy residential suburb in North London with excellent links into the city centre. Hampstead is one of the most up-market and elite areas in London and it has a ‘traditional English’ feel to it. With Hampstead Heath Park (see pictures below) just a short walk from the school, it is a very relaxing, tranquil place to study in one of the world’s most exciting cities.



Activity Programme

Some details of this schedule may change if weather conditions are unsuitable or if there is a seasonal event (such as a Christmas market) which we feel would be more interesting, but the number and type of activities will be consistent. Optional extras such as a **Jazz Night at the famous London Jazz Bar Ronnie Scott's** or a ticket to the performance of a **play at the Globe Theatre** are bookable directly with the school upon arrival and are subject to availability.

*Please note that for Tea at the Ritz, gentlemen must wear ties and no-one will be admitted with sports shoes or jeans.

Tour 1: Westminster Abbey & Big Ben & Houses of Parliament / Thames Walk or River Cruise

On your first day, we will tour some of London's most iconic landmarks along the River Thames. We will have the chance to enter Westminster Abbey, where many of our monarchs were crowned, and view "Poets' Corner" where Britain's greatest writers are honoured.



Tour 2: Shakespeare's Globe Theatre & Tower Bridge

We will visit London's most famous theatre at the side of the Thames. Afterwards, we will walk along the river to see the beautiful views of Tower Bridge. Time permitting, we will visit another of the nearby attractions; the Tate Modern, Southwark Cathedral or Borough Market.



Tour 3: St James' Park, Buckingham Palace & Trafalgar Square and National Gallery

We will walk through one of London's most picturesque parks on the way to the Queen's official London residence. We will then see the beautiful collection of art at the National Gallery in Trafalgar Square.



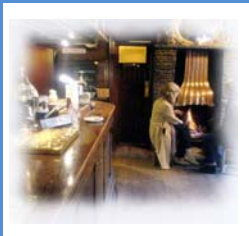
Saturday Tour: Kew Gardens / Kensington Palace

Visit the beautiful Royal Botanical Gardens, Kew, where you will witness an astonishing array of flora and fauna – time permitting we will go on to one of the delightful riverside bars in nearby Richmond. In the event of bad weather, we will visit Kensington Palace, which has been a royal residence since the 17th Century and was the official residence of Princess Diana.



Tour 4: A West-End Musical, Covent Garden Market & a visit to a Traditional English Pub

A visit to London is not complete without going to a musical! Afterwards, we will visit Covent Garden where you can see unusual shops and street performers. The tour will finish in a traditional English pub where you will have the chance to sample English bitters and ales.



Tour 5: Victoria & Albert Museum and Harrods, Knightsbridge

Visit the world's largest museum of international art and design including the fascinating theatre and performance gallery. Harrods, one of the most famous and impressive department stores in the world, is a short walk away.

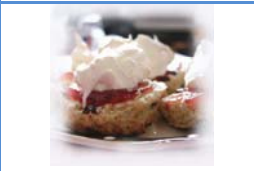


Tour 6: The Ritz, Apsley House & Oxford Street

We will have a delicious afternoon tea at the Ritz in the beautiful and famous room known as the Palm Court.

We will then visit one of London's most magnificent 18th century houses. It is best known as the home of the Duke of Wellington who enriched the house with his magnificent art collection featuring wonderful paintings (including works from Goya, Rubens and Brueghel), porcelain, silver, sculpture, furniture and medals.

The tour ends on Oxford Street where you will have the chance to go shopping and perhaps visit some of London's most famous stores on neighbouring Regent Street, such as Liberty and Harvey Nichol's.



Accommodation Options

Accommodation is available from Sunday to Sunday and students should arrive at their families between 8am and 8pm. Students who are unable to arrive during these times should check with the school before booking their flight.

Students can choose from the following options:

Host Family:

Our homestays are carefully selected and offer students the opportunity to learn more about the British culture in a comfortable setting while studying English in London. Many of our students enjoy their stay so much that they keep in touch with their 'British families' for years after their course.

- Welcoming and friendly atmosphere
- Carefully monitored and visited regularly by our Accommodation Officer
- All bed linen and towels provided
- Host families will wash the student's laundry once a week at no additional cost
- Good and reliable transport links

Hotel:

We can arrange accommodation in a number of conveniently located B&Bs and hotels within walking distance of the school. Please contact us to check availability and prices.

Prices

Registration Fee (non-refundable)	UK£60
2-week Standard 20 Course (9am to 1pm)	UK£360
3 Afternoon Activities/week plus 1 mid-course Saturday excursion	UK£185
2 weeks in Host Family Accommodation (including breakfast)*	UK£280 (Zone 2) UK £260 (Zone 3) UK £240 (Zone 4)
3* Hotel Accommodation	
Single ensuite room with breakfast	From UK£60 / room / night
Double/Twin ensuite room with breakfast	From UK£85 / room / night
Optional Airport transfers (one way)	
Heathrow/London City	UK£70
Gatwick/Stansted/Luton	UK£90

*Half Board (including breakfast and dinner) with the host family is also available for an additional UK£40, although some students prefer to spend their evenings sampling London's varied nightlife and international restaurants.

*Executive host families (including a private or ensuite bathroom) are available for an additional £150 supplement for the 2 weeks. Please note that these families generally offer accommodation with breakfast only.

Please contact LSI London Hampstead for more information:

13 Lyndhurst Terrace
London NW3 5QA
Tel. +44 (0) 20 7794 8111
Fax. +44 (0) 20 7431 5681
Email: ham@lsi.edu

Closed Groups throughout the Year! We can organise this itinerary or similar ones for groups travelling together on your chosen dates throughout the year outside July and August and our Christmas closure period. Please contact us with details of your group and preferred itinerary for a quotation.
