



Paris

French in France
Private Institute of Higher Education
Academy of Paris

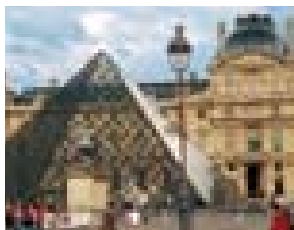
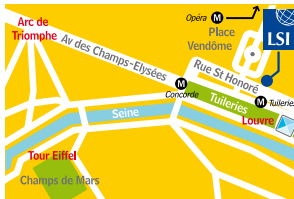


LSI Paris

Situated in a listed, 18th century building at the historical heart of the city, LSI Paris is right by the Louvre and close to the Place Vendome, the Opera and the sophisticated yet bohemian Saint-Honore district. The school is easily accessible by Metro, with Tuileries, Concorde, Opera and Pyramides stations all close by. Computer facilities, a common room and daily newspapers and magazines are provided for student use.

Leisure Programme

The social programme takes advantage of all the myriad attractions that Paris has to offer. Excursions to nearby Versailles and further afield to other parts of France are also possible.



General Courses

Standard 20 see p4

- 12 students max. (average 9)
- All levels

Intensive 30 see p4

- 12 students max. (average 9)
- All levels

Afternoon Course see p4

- 12 students max. per class
- All levels
- Conversational French/Business French/Exam Preparation

Plus Courses see p4

- All levels
- Starting dates for Elementary to Advanced levels: each Monday

Starting dates for students at Beginner level: Jan 4, Feb 1, Mar 1, Apr 6, May 3, Jun 7, Jul 5, Aug 2, Sep 6, Oct 4, Nov 2, Dec 6

Examination Courses:

Diplôme d'Etudes en Langue Française (D.E.L.F.)

- Intensive 30 with DELF preparation in afternoon
- 8 weeks
- Levels A2/B1/B2

Test D'Evaluation de Français (TEF)/Test d'Evaluation de Français adapté au Québec (TEFAQ)

- Afternoon option on LSI Intensive 30
- Minimum of 2 weeks
- Intermediate level or above

Starting dates: each Monday
For examination dates, see p8-9

Diplômes de la Chambre de Commerce et d'industrie de Paris (CCIP):

Français professionnel - 2 levels (A2 or B1)

Français professionnel médical (B2)

Français professionnel secrétariat (B1)

Français professionnel affaires (B2)

Français professionnel du tourisme et hôtellerie (B1 or B2)

- Afternoon option on LSI Intensive 30
- 8 weeks
- Levels required displayed next to course

Please contact LSI Paris for starting date

International School Year see p6

- Beginner to Upper Intermediate levels

Starting dates: Jan 4, Feb 1, Mar 1, Apr 6, May 3, Jun 7, Jul 5, Aug 2, Sep 6, Oct 4, Nov 2, Dec 6

Club 50+ see p10

- Elementary to intermediate levels
- Starting dates: Mar 1, Apr 6, May 3, Jun 7, Sep 6, Oct 4, Nov 2, Dec 6

Executive Courses One-to-One

9 Day Compact course see p31-33

Public Holidays

No instruction on the following dates: Apr 5, May 13, 24, Jul 14, Nov 1, 11

School is closed from Dec 24, 2010 to Jan 3, 2011.

LSI Course Prices in € Prices for tuition only

Course	1 wk	2-3 wks	4-11 wks	12-15 wks	16-19 wks	20+ wks
Standard 20	290	265	240	225	215	205
Intensive 30	400	345	320	300	285	275
TEF/TEFAQ		345	320	300	285	275
Afternoon Course	150	135	120	115	110	105
Club 50 + (wks)						530(2)

Exam Preparation Courses

DELF (weeks)	2560(8)
CCIP (weeks)	2560(8)

Courses for Individuals

Plus Course Supplement: 5 lessons/10 lessons	360/720
Individual lesson	72

ISY - International School Year	24 wks	30 wks	36 wks	48 wks
20 lessons per week	4680	5850	6660	8880
30 lessons per week	6000	7500	8820	11760

Examination Fees

DELF A2/B1	€185
DELF B2	€265
TEF Compulsory	€115
TEF Optional	€105
e-TEF	€115
e-TEFAQ	€140

Additional Fees

Registration fee	€65
Course materials per wk (up to max. of 20 weeks)	€9
Airport transfers (one way): Roissy CDG/Orly	€85
Beauvais - prices on request	

Accommodation

Accommodation placement fee	€60
Homestay	
per person, per week:	
Single room B&B	€205
Single room HB	€270
Single room HB in the suburbs of Paris (Zones 2/3)	€235

Student Residences

prices on request, subject to availability

Hotel

2, 3 and 4 star hotel prices available on request.

Executive Course Prices in € See page 33

