


# 2026 Accommodation


 Brighton, UK





# Homestay

Our homestays are carefully selected and offer students the opportunity to learn more about the British culture in a comfortable setting while studying English in Brighton.



  
welcoming & friendly atmosphere

  
single and twin room options

  
good & reliable transport links

## Key Information

- Carefully selected by our Accommodation Officers and visited on a regular basis
- Choice of single rooms (or twin rooms if two students book for the same time period) with bed and breakfast or half-board
- Students with B&B bookings normally don't have access to kitchen facilities
- All bed linen and towels provided and changed weekly
- All our hosts offer at least one washing load per week per student
- Commute time from the Brighton homestays to LSI Brighton in winter a maximum 20-25 minute walk or a short bus ride, and in summer a 30-35 minute walk or a longer bus ride
- Students can buy a weekly bus pass at reception. For students aged under 19: GBP 20 per week; for students aged 19 and over: GBP 30 per week. The Brighton & Hove Bus app and contactless card payment on the bus are also available.
- Students with an ISIC student ID card who stay for 12 weeks or more can purchase student e-tickets from GBP 17.50 per week (except night services)
- Arrivals between 9:00AM and 10:00PM on Saturday or Sundays. *In July and August Sunday arrival only.* During low season we may be able to accept mid-week arrivals, please check with the school.
- Students under 18 are required to book either half-board or full-board homestay accommodation. Self-catering homestay accommodation is not available for under-18s.

## Executive Homestay Option (Private Bathroom)

Executive Homestays are often of a higher standard than other home stay accommodation. They are evaluated in terms of décor and have a private bathroom (en-suite or sole use).

### Homestay Prices

	Homestay Weekly Rates (per person per week)	Extra Night Rates (per person per night)**
Single room, B&B	GBP 195	GBP 30
Single room, Half Board	GBP 235	GBP 35
Twin room*, B&B	GBP 175	GBP 25
Twin room*, Half Board	GBP 205	GBP 30
Executive single room, B&B	GBP 295	GBP 45
Executive single room, Half Board	GBP 335	GBP 50

**No Extra Nights offered in High Season.**

#### Supplemental Rates (per person per week)

Summer Supplement (Jun 14 – Aug 23)	GBP 45
Special Diets B&B / HB	GBP 25/45
Christmas Supplement (Weekend of Dec 26/27 and Jan 02/03)	GBP 55
Executive Supplement	GBP 100
U18 Supplement	GBP 20

#### Key

B&B = Bed and Breakfast (Breakfast only, no kitchen access), No extra nights during the summertime

\* For students booking together with the same arrival and departure dates

\*\* Subject to availability. Please check with the school before booking flight tickets

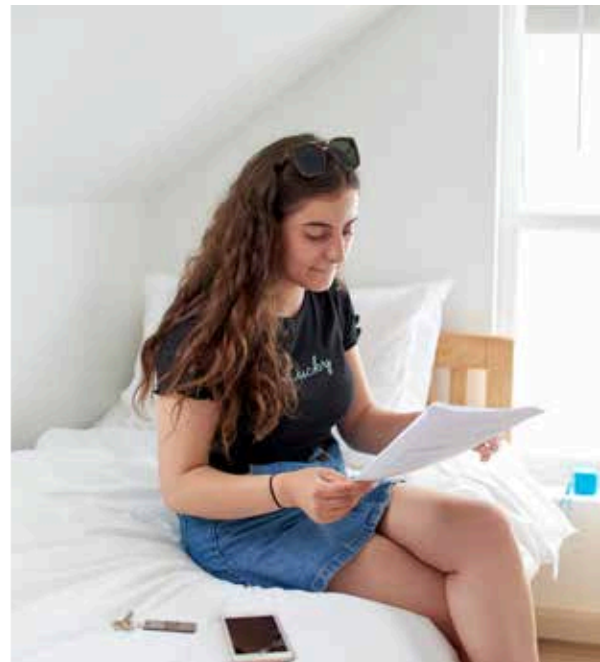


# Residences

These options are more suitable for an independent student who is looking for a self-catering accommodation at an affordable price. All students must be 18 or older.

## Portland 55

*LSI Brighton, 55 Portland Rd, Hove, BN3 5DQ*



### Location

LSI Brighton's own residence, part of our Portland Road campus.

### Minimum age

18

### Rooms

Single and twin rooms available (twin rooms are trundle beds).

### Private Bathroom

Yes, all rooms are en-suite with a shower, toilet, basin and heated towel rail.

### Meals

Self-catering. Facilities include a student kitchen equipped with two ovens, two fridges and freezers, two microwaves, and all necessary utensils. The kitchen is open until 10:30PM.

Additionally, a kitchenette with a fridge, kettle, and microwave is available 24 hours for use when the main kitchen is closed.

### Wheelchair accessible room

One room is fully accessible to wheelchair users, offering convenient access to the garden, kitchen, and residents' lounge.

### Facilities

The kitchen is open until 10:30PM, while a kitchenette is available 24 hours. Laundry facilities include two washing machines and two dryers. Two lounge areas are accessible until 10:30PM. Bed linen and towels are provided (with an spare set of bed linen). Rooms are professionally cleaned once a week (usually on Thursday). Cleaning staff will put fresh linen on beds and fresh towels will be provided.

### Important

Students are responsible for keeping their rooms tidy during their stay. Students are responsible for cleaning everything they use in the kitchen (cups, plates, cooking equipment) and food preparation areas in the kitchen. The residence is mixed gender on all floors.



**Video**

<https://vimeo.com/370321573>

[Click here to take a virtual tour](#)

**Availability**

Year-round

**Local Facilities**

Large convenience store 30m, 8 minute walk to supermarkets.

**Transport**

There are bus stops directly outside the building for services to and from Brighton city centre. Bus passes cost GBP 20 per week for students under 19, and GBP 30 per week for those aged 19 and over. Hove train station for London and Gatwick airports: 10-minute walk.

**Arrivals & Departures / Check-in & Check-out**

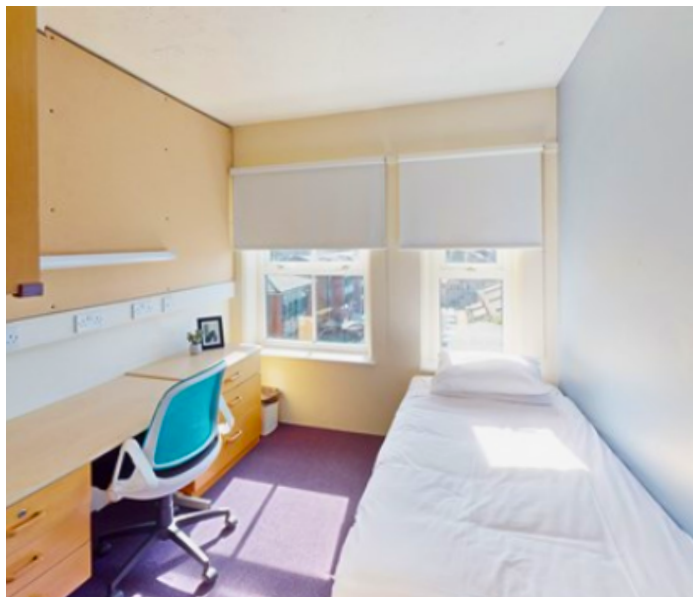
Sunday to Saturday or Sunday to Sunday (please check availability for arrivals on other days).  
Check in between 2:00PM and 10:00PM.  
Check out before 10:00AM.

Prices (per person per week)

Single room	GBP 300
Twin room	GBP 275
Summer Supplement (Jun 14 - Aug 23)	GBP 40

# Phoenix Halls of Residence, University of Brighton

Block C, Southover St,  
Brighton BN2 9WJ



## Location

15-minute from Brighton city centre by public transport, and 35-minute from LSI Brighton. Well-connected area offering easy access to local amenities, transport links and key attractions

## Minimum age

18

## Rooms

Single rooms

## Private Bathroom

Yes, all rooms are en-suite

## Meals

Self-catering

## Facilities

Shared kitchens and common areas (between 6 and 8 students). Kitchens are fully equipped with cooking utensils (pots and pans), cutlery, crockery, kettle and toaster. Common rooms include a TV, pool table and table tennis. On-site facilities also include laundry, Wi-Fi and bike storage.

## Availability

Summer only: 4th July to 19th September, 2026

## Minimum Stay

1 week

## Other

Bed linen and towels provided (bed linen are changed weekly).

## Local Facilities

5-minute walk to Aldi (supermarket), 2-minute walk to 'The Level' (local park) and many cafes and pubs in the area

## Transport

Bus stops are located within a few minutes' walk from the residence, with frequent services providing direct access to Brighton city centre and Brighton train station in 15 minutes.

## Arrivals & Departures / Check-in & Check-out

Sunday to Saturday or Sunday to Sunday

Check in between 3:00PM and 10:00PM.

Check out before 10:00AM.

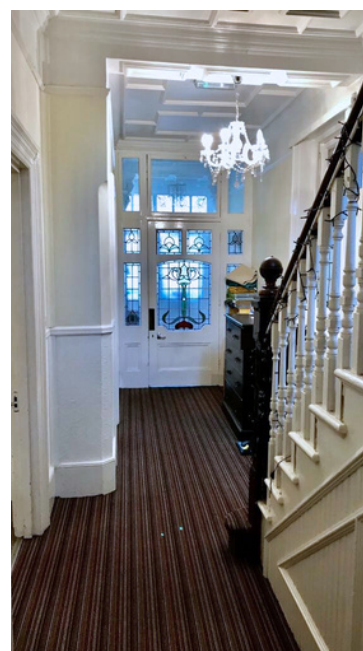
## Cancellation Policy

Free cancellation up to 5 weeks before the arrival date. Cancellations or changes made after this date will incur full payment of the room.

Prices (per person per week)	<b>Special Offer</b>	
	Ends August 31 <sup>st</sup> , 2026	From September 1 <sup>st</sup> , 2026
Single room	GBP 295	GBP 320

# Mountford Student House

New Church Rd, Hove, BN3 4FH



## Location

Located in a quiet residential area just a 10-minute walk from LSI Brighton. One block from the sea.

## Minimum age

18

## Rooms

Single and twin rooms

## Private Bathroom

No, shared bathrooms

## Meals

Self-catering

## Facilities

Features a fully equipped kitchen, a comfortable lounge and a dining area, laundry facilities, and an outside space/garden

## Availability

Year-round

## Other

The residence is mixed gender on all floors. Students are responsible for changing their own bedding and cleaning their rooms. Students are also responsible for cleaning everything they use in the kitchen e.g. cups and plates.

## Local Facilities

5 minute walk to supermarket.

## Transport

There are bus stops directly outside the building for services to and from Brighton city centre. Bus passes cost GBP 20 per week for students under 19, and GBP 30 per week for those aged 19 and over. Hove train station for London and Gatwick airport: 10-minute walk.

## Arrivals & Departures / Check-in & Check-out

Saturday to Saturday or Sunday to Sunday. Check in from 2:00PM, and check out before 10:00AM.

## Cancellation Policy

Free cancellation up to 5 weeks before the arrival date. Cancellations or changes made after this date will incur full payment of the room.

## Prices (per person per week)

Single room	GBP 300
Twin room	GBP 275
Summer Supplement (Jun 14 - Aug 23)	GBP 40