

2026 Accommodation

 Brisbane, Australia



Homestay

Our homestays are carefully selected and offer students the opportunity to learn more about Australian culture in a comfortable setting while studying English in Brisbane.



welcoming & friendly atmosphere



single and twin room options



good & reliable transport links



Key Information

- Carefully selected by our Accommodation Officers and visited on a regular basis
- Choice of single rooms (or twin rooms if two students book for the same time period) with bed and breakfast or half-board
- Our homestay families are located within zones 1 and 2, within only 45 minutes by public transport from the school
- All bed linen and towels provided
- Laundry facilities are available at no extra charge
- Arrival and departures are Saturday to Saturday or Sunday to Sunday - additional nights are subject to availability
- **A placement fee will apply to all accommodation reservations**



Executive Homestay Option (Private Bathroom)

Executive Homestays offer private bathroom facilities (en-suite or sole use) and are usually slightly larger in size than general homestay option (limited availability).

Homestay Prices

	Homestay Weekly Rates (per person per week)	Extra Night Rates (per person per night)
Single room, B&B	AU \$340	AU \$50
Single room, Half Board	AU \$410	AU \$65
Twin room*, B&B	AU \$335	AU \$50
Twin room*, Half Board	AU \$405	AU \$65

Supplemental Rates (per person per week)	
Under 18, Full Board	AU \$105
Special Diets B&B / HB	AU \$95
Executive Supplement	AU \$95

Key

B&B = Bed and Breakfast (Breakfast only, no kitchen access),

HB = Half Board (Breakfast and Dinner)

* For students of the same gender booking together with the same arrival and departure dates

** Subject to availability. Please check with the school before booking flight tickets. Extra night rates are chargeable up to 5 days. 6 night bookings are to be billed using the weekly rate.



Student Guesthouses

These options are more suitable for an independent student who is looking for a self-catering accommodation at an affordable price. All students must be 18 or older, except when accompanied by a parent or guardian in a twin or double room.

STUDENT ONE

Multiple locations



Location

4 minutes by bus or 12 minutes walking from LSI Brisbane

Minimum age

18

Private Bathroom

Shared bathroom in shared apartments and private bathroom in a single studio apartment

Meals

Self-catering

Facilities

Free Wi-Fi, fitness facilities, media and study centres, various lounges, games room, indoor/outdoor BBQ, multi-use area, laundry facilities, free bikes for sharing, play stations, games room, cinema.

Availability

Year-round. Minimum stay 12 weeks.

Check-in & Check-out

Check in from 2:00PM and check out by 10:00AM.

Check-in date must be within 9 months from the booking date.

Other

Building and all living areas can only be accessed with a swipe card. Reception is staffed 24 hours. Ideal accommodation for students.

Cancellation policy

Only 2 weeks of rent are required as a deposit to secure a booking. The deposit is fully refundable up to 21 days prior to check-in. If cancelled within 21 days from check-in, the deposit is non-refundable.



Rooms Options

Adelaide Street, **363 Adelaide St, Brisbane, QLD 4000**

Bunk Studio | Twin Studio | Single Studio | Queen/Adaptable Studio | King Studio | Executive Studio
| 5 Bedroom Apartment - Standard | 5 Bedroom Apartment - Corner View

Wharf Street, **38 Wharf St, Brisbane, QLD 4000**

Single Studio | Double Studio | Double/Adaptable Studio | Executive Studio | 4 Bedroom Apartment |
5 Bedroom Apartment - Standard | 5 Bedroom Apartment - Corner View | 5 Bedroom Apartment -
Queen Bed

Elizabeth Street, **97 Elizabeth St, Brisbane, QLD 4000**

Single Studio | Queen/Adaptable Studio | Executive Studio | 4 Bedroom Apartment | 5 Bedroom
Apartment - Standard | 5 Bedroom Apartment - Double Bed | 6 Bedroom Apartment Standard | 6
Bedroom Apartment - Ensuite

Note 1: Before booking, please check availability and pricing with LSI Brisbane.

Note 2: Contact LSI Brisbane for additional information about prices, as these may change according to the season.

Note 3: Bedding is not included in the accommodation. Students can purchase a bedding pack directly from Student One upon check-in. Each pack includes a pillow, double doona, pillowcase, double doona cover, fitted sheet, flat sheet, bath towel, hand towel, and bath mat. Please check with the school for any updates as prices are subject to change without prior notice.

Note 4: Shared Apartments may be shared by different genders. Requests to stay in a unit with the same gender can be accommodated but is subject to availability. Please mention the request upon booking.

Prices (per person per week)	
Studio apartment	from \$589 pp. p/week
Single room in shared apartment	from \$329 pp. p/week

ADALONG STUDENT GUEST HOUSE

81 Stephens Rd, Brisbane, QLD 4101



Location

Located in South Brisbane, a 10-minute walk from the Southbank train station and the Southbank Parklands. 15 minutes by bus or a 50-minute walk from LSI Brisbane.

Minimum age

18

Rooms

Single

Private Bathroom

Shared bathrooms (separate for male and female)

Meals

Self-catering

Availability

Year-round

Facilities

Guest lounge, coffee/tea making facilities, coin operated laundry facilities, free internet access.

Check-in & Check-out

Check in from 2:00PM to 10:00PM, and check out from 06:00AM to 10:00AM.

Other

Bedding and towels are washed weekly. Ideal accommodation for students (usual residents also include young professionals, backpackers and families).

Deposit & Cancellation Policy

20 days notice for any change or cancellation is required. Otherwise, 1 week rental fee will be charged or forfeited. A deposit is not required, but Adalong accepts minimum of 1 week booking.

Upon commencement of contract, 14 days notice is required for bookings less than 3 months; 28 days notice is required for bookings 3 months or more.

Student will be charged for full 2-week/28-week notice period, regardless of their actual move-out date.

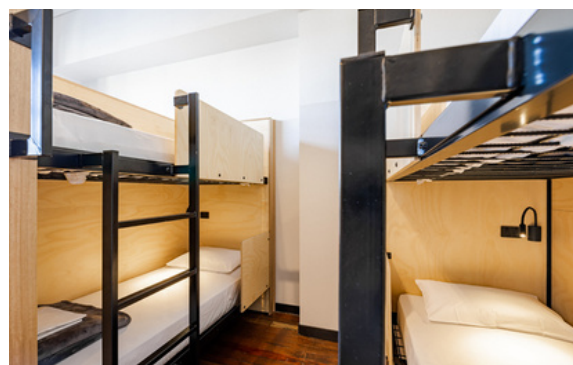
Note: Please check availability with LSI Brisbane before making a booking as prices are subject to change without notice. Prices may vary on the season.

Prices (per person per week)	
Single room	\$300 pp, p/week

LSI reserves the right to replace residence options with similar alternatives subject to availability. Please check with the school at the time of booking.

BUNK BRISBANE

21 Gipps St, Fortitude Valley, QLD 4006



Location

Located in Fortitude Valley, just a 15 minute walk through Centenary Park from LSI Brisbane.

Minimum age

18

Usual residents

Students

Rooms

Dormitory (8 to 10 beds)

Private Bathroom

Shared bathrooms (separate for male and female)

Meals

Self-catering

Availability

Year-round

Facilities

Comfortable lounge, laundry facilities, fully equipped kitchens, luggage storage, in-room personal safes, free internet access

Check-in & Check-out

Flexible check-in and check-out available 24/7.

Other

24 hour reception

Deposit & Cancellation Policy

21 days notice for any change or cancellation is required. Otherwise, 1 week rental fee will be charged or forfeited.

Note: Please check availability with LSI Brisbane before making a booking as prices are subject to change without notice. Prices may vary on the season.

Prices (per person per week)	
From March to August 2025	AU\$475 pp, p/week
From September 2025	AU\$530 pp, p/week

LSI reserves the right to replace residence options with similar alternatives subject to availability. Please check with the school at the time of booking.