

2025 Accommodation

Auckland, New Zealand



Homestay

Our homestays are carefully selected and offer students the opportunity to learn more about the Kiwi culture in a comfortable setting while studying English in Auckland.



welcoming & friendly atmosphere



single and twin room options



good & reliable transport links



Key Information

- Carefully selected by our Accommodation Officers and visited on a regular basis
- Choice of single rooms (or twin rooms if two students book for the same time period) with bed and breakfast or half-board
- Students with B&B bookings normally don't have access to kitchen facilities
- All bed linen and towels provided and changed weekly
- Most host families will wash the student's laundry at least once a week at no additional cost
- Good and reliable transport links
- Arrivals Saturday to Saturday or Sunday to Sunday (for the period of the course) - additional nights are subject to availability
- A placement fee is required for all accommodation
- Students under 18 must book Full Board accommodation (which is exclusively available to students under 18)



Private Bathroom Homestay option

Some homestays offer a private bathroom (either en-suite or for sole use). Availability is limited—please contact us if you're interested.

Homestay Prices

Extra Night Rates
(per person per night)**

Homestay Weekly Rates (per person per week)	2025	2025
Single room, B&B	NZ \$315	NZ \$65
Single room, Half Board	NZ \$400	NZ \$80
Single room, Half Board, Under 18's	NZ \$410	NZ \$85
Twin room*, B&B	NZ \$315	NZ \$65
Twin room*, Half Board	NZ \$400	NZ \$80

Supplemental Rates (per person per week)	2025
Winter Supplement (Jun 1 – Aug 30)	NZ \$30
Special Diets B&B / HB	NZ \$40/80
Christmas Supplement (Dec 23 - Jan 3, 2025)	NZ \$90
Executive Supplement	NZ \$90

Key

B&B = Bed and Breakfast (Breakfast only)

HB = Half Board (Breakfast and Dinner)

*For students booking together with the same arrival and departure dates.

**Extra nights are subject to availability. Please check with the school before booking flights.

Students should register for an AT HOP card, this is a smart card you can add money to, so you can pay for bus, train or ferry fares in Auckland. Top up your card before you travel, then tag on and off public transport services to pay as you go. Our families will help students get an AT HOP Card the day they arrive (unless they arrive on a Sunday late as all the shops are closed around 5:30 – 6pm). LSI Auckland will cover The AT HOP card in orientation on the student's first day and assist students with organising their travel card. Students who study for 16 weeks are eligible for a discount on travel fees. For more information visit: <https://at.govt.nz/bus-train-ferry/at-hop-card/>



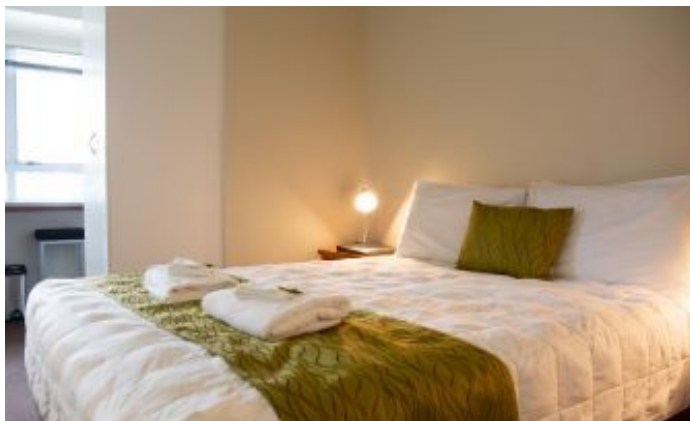
Residences

All residences are subject to availability

These options are more suitable for an independent student who is looking for a clean and basic accommodation at an affordable price. All students must be 18 or older unless specified otherwise.

City Lodge

150 Vincent St, Auckland 1010



Location

In the CBD, a 5-minute walk to LSI and the city centre.

Minimum age

18

Rooms

Single, and double/twin rooms available. All rooms are ensuite (private bathroom).

Meals

Self-catering

Facilities

Refrigerator, tea/coffee making facilities, TV in room, desk, lounge with TV, large kitchen, dining area, internet facilities, laundry room, reduced rates for YMCA fitness centre located directly above City Lodge.

Availability

Year round.

Other

Clean linen supplied weekly. 24/7 managers. Check-in from 2pm and check-out before 10:30am.

Deposit required

Yes, refundable bond deposit (upfront fee upon check-in): For stays less than 28 nights: \$140. For stays more than 28 nights: 1 week accommodation fee. Refundable Bond is refundable at the end of the stay as long as there is no damage or items missing from the room.

Cancellation Policy

Rooms can be cancelled without penalty 4+ weeks in advance of the course start date. Cancellations or changes within 4 weeks prior to arrival and **no-shows are non-refundable**.

An LSI Enrolment Form should be sent to LSI within 48 hours of us confirming the accommodation availability. Payment for the accommodation should be made 4+ weeks in advance of the course start date.

Prices (per person per week)	2025	2026
Single room en suite	NZ \$560	NZ \$575
Double room* en suite	NZ \$310	NZ \$330
Twin room* en suite	NZ \$340	NZ \$365

*For students booking together with the same arrival and departure dates



Location

In the CBD, a 5-minute walk to LSI and the city centre.

Minimum age

18

Rooms

Single

Private Bathroom

No, shared on each floor

Meals

Self-catering

Facilities

Mini-fridge, wardrobe, lounge with TV, kitchen facilities and utensils, Wi-Fi, laundry room, on-site fitness centre

Availability

Year round.

Other

Clean linen supplied weekly. 24/7 managers.

Deposit required

Yes, refundable bond deposit (upfront fee upon check-in): For stays less than 28 nights: \$70. For stays more than 28 nights: 1 week accommodation fee.

Refundable Bond is refundable at the end of the stay as long as there is no damage or items missing from the room.

Cancellation Policy

Cancellations or changes to bookings must be made 2 weeks prior to check in date. Cancellations or changes within 2 weeks and no show reservations will incur two week's rental charges.

Prices (per person per week)	2025
Single room	NZ \$490
Double room*	NZ \$275
Twin room*	NZ \$305

*For students booking together with the same arrival and departure dates

Park Towers

110 Grafton Rd, Auckland 1010



Location

Located on Grafton Road, a 12-minute walk to LSI and the city centre.

Minimum age

18

Minimum stay

4 weeks

Rooms

Furnished Studio

Private Bathroom

No. There is 1 bathroom per every 15 residents (1 male and 1 female bathroom on each floor)

Meals

Self-catering

Facilities

Desk, fridge, wardrobe, heater, media room, study room, kitchen facilities, Wi-Fi, laundry room, Common area with TV, gardens, lawn area, gazebo

Each floor (30 residents - mixed genders 50/50) has 1 kitchen, 1 laundry room, and 1 private lounge

Availability

Year round. This accommodation is booked through Accommodation Coordinator at LSI

Transport

Public transport is close by on Park Road - Inner Link and on Grafton Road - Bus Route #75

Other

Move-in/Arrival Pack Rental \$100 (non-refundable)*. Including bed linens and blankets, towels, kitchen utensils.

Payment

All accommodation fees must be paid to LSI 4 weeks before start date to confirm booking. On arrival, credit Card details are taken at Check-in, charges only for incidentals or damages. Extra night bookings are accepted.

Cancellation Policy

Cancellations or changes within 4 weeks and no show reservations will incur two week's rental charges.

Prices (per person per week)	2025	2026
Furnished Studio	NZ \$320	NZ \$335
Furnished Studio (Couple)*	NZ \$220	NZ \$240

* For students booking together with the same arrival and departure dates



Location

Located at the top of Queen Street, a 2-minute walk from LSI Auckland.

Minimum age

18

Rooms

Single and double rooms are available.

Meals

Breakfast NZ\$ 15 per day

Breakfast and Dinner: NZ\$ 40 per day

Facilities

Complementary Wi-Fi, gym, air conditioning, car park (for an additional fee), onsite bar and restaurant.

Minimum Stay

7 nights

Availability

Year round.

Other

24-hour front desk, room service.

Cancellation Policy

Bookings of 0 - 7 days - 24 hours before arrival free cancellation, otherwise 1 night cancellation charge

Bookings of 8-30 days - 7 days before arrival free cancellation, otherwise 3 nights cancellation charge

Bookings of 31+ days - 14 days before arrival free cancellation, otherwise 1 week cancellation charge

Any no-show bookings will be charged as per above cancellations depending on length of stay

2025 Prices (per person per week)*

Single Room	NZ \$599
Double Room^	NZ \$360
High Season Supplement**	NZ \$90

*prices subject to change – confirm at time of booking

^ For students booking together with the same arrival and departure dates

** High season period: 1 February – 31 March 2025 & 1 October – 15 December 2025. Fully booked: 2 April 2025 & 31 December 2025

Princeton Apartments - Budget option *30 Symonds St, Auckland 1010*



Location

Princeton Apartments are a 15-minute walk to LSI and the city centre.

Minimum age: 18

Rooms: Each apartment has 2 bedrooms.

Minimum stay: 4 weeks

Private Bathroom

Each 2-bedroom apartment has one bathroom. If a single person books the apartment, they will have the bathroom to themselves.

Facilities

Electricity, hot/cold water, fully equipped kitchenette, hotplates, microwave/fridge and utensils. An outdoor deck, TV Lounge, 2 coin operated laundries, and secured entry.

Meals

Self-catering

Availability

Year round.

Other

Internet is available for a fee of NZ \$85 a month to be purchased directly from the residence.

Deposit required

Yes, NZ\$ 500 – refund at the end of tenancy less NZ\$ 150 for departure cleaning fee.

Deposit must be collected upon arrival to the residence.

Cancellation Policy

Cancellations or changes to bookings must be made 2 weeks prior to check in date. Cancellations or changes within 2 weeks and no show reservations will incur two week's rental charges.

Prices (per person per week)	2025
Single room (lockable), shared bathroom	NZ \$320
Entire 2-Bedroom Apartment + private bathroom*	NZ \$640

*up to 2 people per flat

Independent Accommodation Suggestions:

Lylo**

54 Cook St, Auckland 1010



Location

In the heart of Auckland, a 12-minute walk to LSI.

Minimum age

18

Rooms*

Single pod in 6-bedroom room (mixed gender)

Single pod in 6-bedroom room (female only)

Double room

Twin room

Queen room

Private Bathroom

Single pods and double rooms offer shared bathroom. Twin and queen rooms are en-suite.

Meals

Self-catering

Facilities

Room safe, TV, bed linen, communal kitchen, laundry facilities, on-site bar, multi-use work spaces for work and leisure, free internet.

Availability

Year round. Maximum 4 week stay.

Other

Self check in. 24/7 reception.

Towels are available at reception for an additional cost.

Pods have felt screens for privacy. Dedicated luggage storage lockers available.

Cancellation Policy

Bookings can be cancelled without penalty up to 2pm the day prior to check in.

****Please note students must book this accommodation directly with Lylo. For more details, please visit: www.lylo.com/auckland/**

Use promo code **LSILYLO** to receive 15% off the advertised prices. For more details click [here](#)

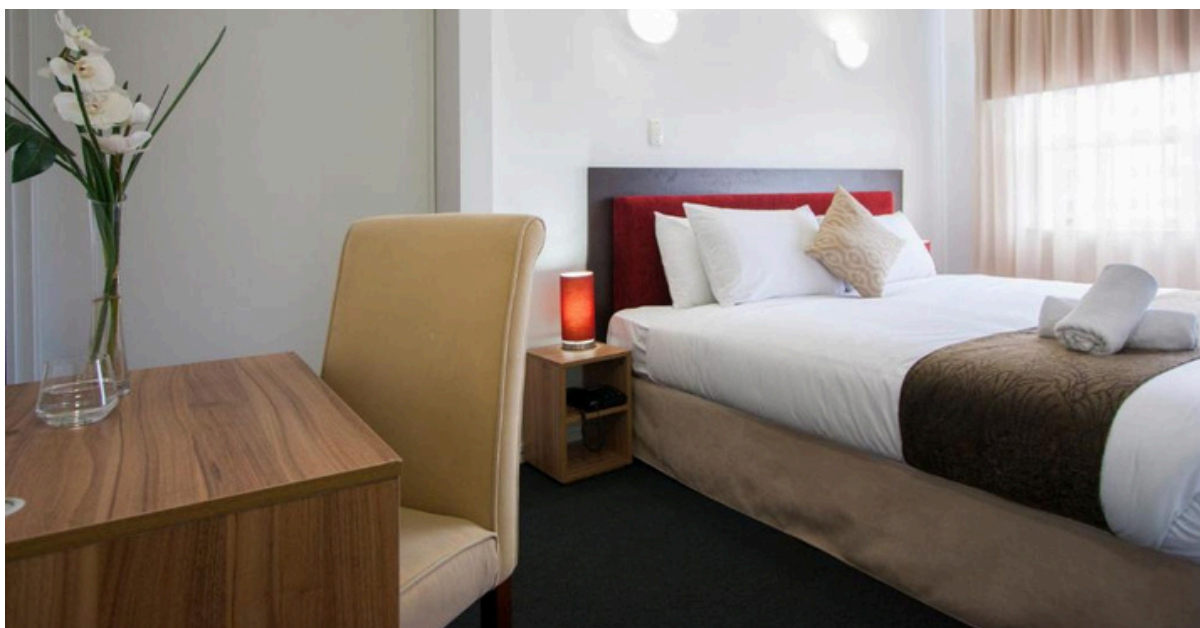
*Additional rooms types may be available; please refer directly to Lylo's website for up-to-date options.

Hotels

This is just a sample of the hotels that Auckland offers. To compare and book from a range of Auckland hotels, visit www.booking.com or www.wotif.co.nz to see their Auckland accommodation list.

Ascotia Off Queen

3-5 Scotia Place, Auckland 1010



Location

Just a 1-minute walk to LSI Auckland.

Availability

Year round.

Minimum age

18

Other

24-hour reception.

Rooms

Twin, queen, king rooms, executive staying

Cancellation Policy

Cancellations must be received by 24 hours prior to check-in time.

Meals

Self-catering

Please note students must book this hotel directly with the Hotel. For more details, please visit:

<https://vrhotels.co.nz/ascotia-off-queen/>

Facilities

Range available depending on room.

2025 Prices (per person per week)

Twin room	Contact Hotel Directly
Queen room	Contact Hotel Directly
King room	Contact Hotel Directly

Parkside Hotel & Apartments Auckland *100 Greys Avenue, Auckland 1010*



Location

Overlooking Myers Park, a 5-minute walk from LSI Auckland.

Minimum age

18

Rooms

Deluxe rooms and suites available

Meals

Self-catering

Facilities

Sky TV, Wi-Fi, refrigerator, microwave, electric kettle, minibar, tea/coffee making facilities, restaurants, pool, gym, conference facilities.

Availability

Year round.

Other

24-hour front desk, currency exchange, room service.

Cancellation Policy

Cancellations depend on the booked rate/package.

Please note students must book this hotel directly with the Hotel. For more details, please visit:

<https://www.parksidehotel.co.nz>

2025 Prices (per person per week)

Deluxe room

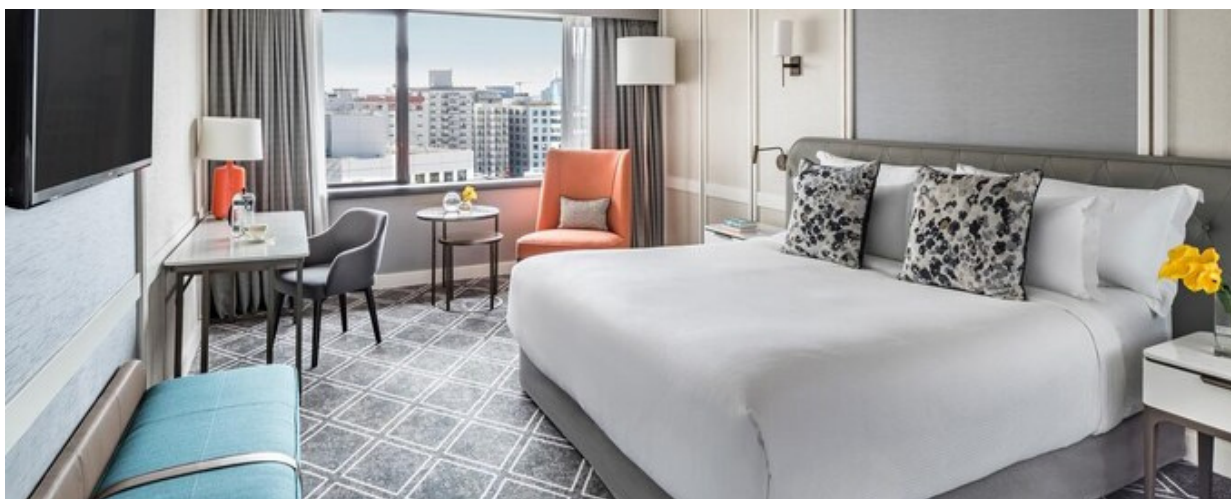
Contact Hotel Directly

Suite

Contact Hotel Directly

Cordis Hotel

83 Symonds St, Auckland 1010



Location

Near Symonds Street overbridge and a 3-minute walk to LSI Auckland.

Minimum age

18

Rooms

Standard, family and club rooms, and suites available

Meals

Self-catering

Facilities

Wi-Fi, cable TV, tea/coffee making facilities, hairdryer, restaurants/bar, conference facilities, pool, gym, spa, business centre.

Availability

Year round.

Other

24-hour front desk, and in-room dining, butler and room service.

Cancellation Policy

Free cancellations 24 hours in advance. The fee of the first nights accommodation will be charged for cancellations received after 4pm on the day of arrival.

Please note students must book this hotel directly with the Hotel. For more details, please visit: <https://www.cordishotels.com/en/auckland>

2025 Prices (per person per week)

Standard room	Contact Hotel Directly
Family room	Contact Hotel Directly
Suite	Contact Hotel Directly