

Accommodation Boston, USA 2020



Accommodation in Boston

Accommodation placement fee: US\$95

Homestay

Our homestays are carefully selected and offer students the opportunity to learn more about the American culture and New England life in a comfortable setting.

- **Welcoming and friendly atmosphere**
- **Carefully selected by our Accommodation Coordinators and visited on a regular basis**
- **Choice of single rooms with bed and breakfast or half-board**
- **All bed linen and towels provided**
- **Laundry facilities available in the home or at local laundromats (Prices vary, but one load, wash and dry, is about US\$5-6.)**
- **Good and reliable public transportation**
- **Commutes average time from 45 minutes to 65 minutes**
- **Age Minimum: 16**



Executive Homestay Option

Executive Homestays offer a private bathroom (en-suite or sole use). Limited availability; please contact if interested.

Homestay Prices

Homestay Weekly Rates (per person per week)

Single room, B&B	US\$250
Single room, Half Board	US\$315
Twin room*, B&B	US\$220
Twin room*, Half Board	US\$270

Discount for 12+ weeks booked and paid for in advance: Single room US\$20 p/wk; Twin room US\$10 p/wk

Supplemental Rates (per person per week)

Summer Supplement (June 21 – August 30)	US\$40	Executive Supplement	US\$90
Special Diets B&B / HB	US\$25/45	Christmas Supplement	US\$60

Extra Night Rates (per person per night)**

Single room, B&B	US\$65	Twin room*, B&B	US\$55
Single room, Half Board	US\$80	Twin room*, Half Board	US\$70
Executive supplement B&B/HB	US\$90/105		

Key

B&B = Bed and Breakfast (Breakfast only)

HB = Half Board (Breakfast and Dinner)

* For students booking together with the same arrival and departure dates.

** Subject to availability. Please check with the school before booking flight tickets.

Residences

ESL Townhouse

Location: Fenway area of Boston. 30 minutes by train to LSI Boston and to popular city sights.

Minimum age: 18

Rooms: Small single and large single rooms, double rooms and studio apartments

Private Bathroom: No, shared with up to 3 people in the apartment

Meals: Self-catering

Facilities: Community kitchen, TV, telephone, free Wi-Fi, laundry facilities

Prices (per week): Single room: US\$510; Large single room: US\$680; Double room: US\$340; Studio apartment: US\$820

A US\$200 non-refundable move-in fee is invoiced by LSI, and a US\$200 refundable security deposit is collected by the residence upon arrival, payable in cash only.

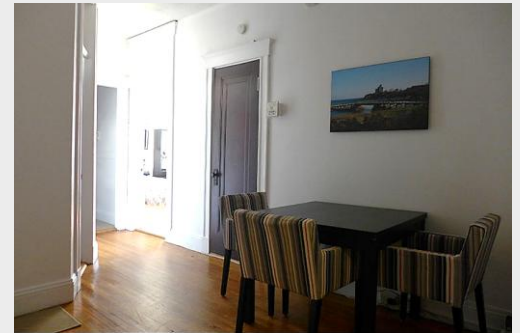
Availability: Year-round; fills up in summer. Early request recommended. Saturday to Saturday only; no extra nights

Other: Cleaning service every 2 weeks and prior to new arrivals. Linens and towels provided.

Cancellation policy: For cancellation notice 30 days before arrival 1 week of accommodation is charged.

For cancellation notice 15 days or less before arrival 2 weeks of accommodation are charged. Move in fee of US\$200 charged for all cancellations.

Late night arrival fee: Fee of US\$50 for transportation scheduled to arrive in Boston between 9:30pm and 11pm. Fee of US\$100 for transportation scheduled to arrive in Boston after 11pm.



International Guest House - American Dormitory

Location: In the heart of the Back Bay area of Boston. 25 minute walk to LSI Boston.

Minimum age: 16

Rooms: Single and shared rooms

Private Bathroom: No, shared with up to 3 people in the apartment except in single rooms

Meals: Breakfast and dinner in price included

Facilities: Free Wi-Fi, community kitchen, TV lounge, fridge, telephone, laundry facilities

Prices (per person per week): Single room: US\$770; Shared room: US\$455

A US\$200 refundable room & key deposit is collected by the residence upon arrival, payable in cash only. Late fees for late night check-ins and late departures may apply.

Availability: Year-round; fills up in summer. Early request recommended. Extra night options available on request.

Other: Weekly cleaning service available. Linens and towels provided.

Cancellation policy: Free cancellations for individual reservations 7 nights prior to arrival. For cancellations less than 7 days prior arrival 1 week of accommodation is charged. No refund once reservation starts.



Residences

Waverly Apartments

Location: Located near a supermarket, public parks set alongside Boston's famous Charles River. 45 minutes by subway to LSI Boston. 15 minutes by bus to Harvard Square. 35 minutes by bus or subway to Downtown Boston. A transit stop is located just a half block away from the complex.

Minimum age: 18

Rooms: Single rooms

Private Bathroom: No, shared bathrooms

Meals: Self-catering

Facilities: Free Wi-Fi, TV, telephone, community kitchen, study rooms, barbeque lounge, free site laundry facilities, park for pets

Prices (per person per week): Single room: US\$350

Upon arrival a US\$200 refundable room & key deposit is collected by the residence, payable in cash only. Late fees for late night check-ins and late departures may apply. Max. 2 pets allowed for a monthly fee of US\$60 per pet. Breed restrictions apply.

Availability: Year-round; fills up in summer. Early request recommended. Extra night options available on request.

Other: Weekly cleaning

Cancellation policy: Free cancellations for individual reservations 7 nights prior to arrival. For cancellations less than 7 days prior arrival 1 week of accommodation is charged. No refund once reservation starts.

