

London, UK



Homestay

Our homestays are carefully selected and offer students the opportunity to learn more about the British culture in a comfortable setting while studying English in London.



welcoming & friendly
atmosphere



single and twin
room options



good & reliable
transport links



Key Information

- Families are carefully selected by our Accommodation Officers and visited on a regular basis
- Choice of single rooms (or twin rooms if two students book for the same time period) with bed and breakfast or half-board
- Students with B&B bookings normally don't have access to kitchen facilities
- All bed linen and towels provided and changed weekly
- All our hosts offer at least one washing load per week per student
- Arrivals are between 7:00 am and 11:00 pm on Saturdays or Sundays.
- All homestays have good and reliable transport links. Commute time from the London homestays to LSI London Central by public transport can be up to 60 minutes*.

*Public transport fees in London vary based on the zone you're traveling in. For detailed information about fares, you can visit the official Transport for London (TfL) website: <https://tfl.gov.uk/fares>.

If you're a student staying in London for 14 weeks or more, you can apply for a Student Oyster Card, which provides a 30% discount on travel prices. This is a great way to save money while commuting!

Executive Homestay Option (Private Bathroom)

Executive Homestays have a private bathroom (en-suite or sole use).

Homestay Prices

| | Homestay Weekly Rates (per person per week) | Extra Night Rates (per person per night)** |
|-----------------------------------|--|---|
| Single room, B&B | GBP 210 | GBP 49 |
| Single room, Half Board | GBP 255 | GBP 60 |
| Twin room*, B&B | GBP 185 | GBP 42 |
| Twin room*, Half Board | GBP 230 | GBP 52 |
| Executive single room, B&B | GBP 300 | |
| Executive single room, Half Board | GBP 345 | |

Supplemental Rates (per person per week)

| | |
|---|-------------|
| Summer Supplement (Jun 16 – Aug 25) | GBP 40 |
| Special Diets B&B / HB | GBP 35 / 50 |
| Christmas Supplement (Dec 23 - Jan 1, 2025) | GBP 55 |
| Executive Supplement | GBP 90 |
| Up to 45min from LSI London | GBP 40 |

Key

B&B = Bed and Breakfast (Breakfast only, no kitchen access), No extra nights during the summertime

* For students booking together with the same arrival and departure dates

** Subject to availability. Please check with the school before booking flight tickets



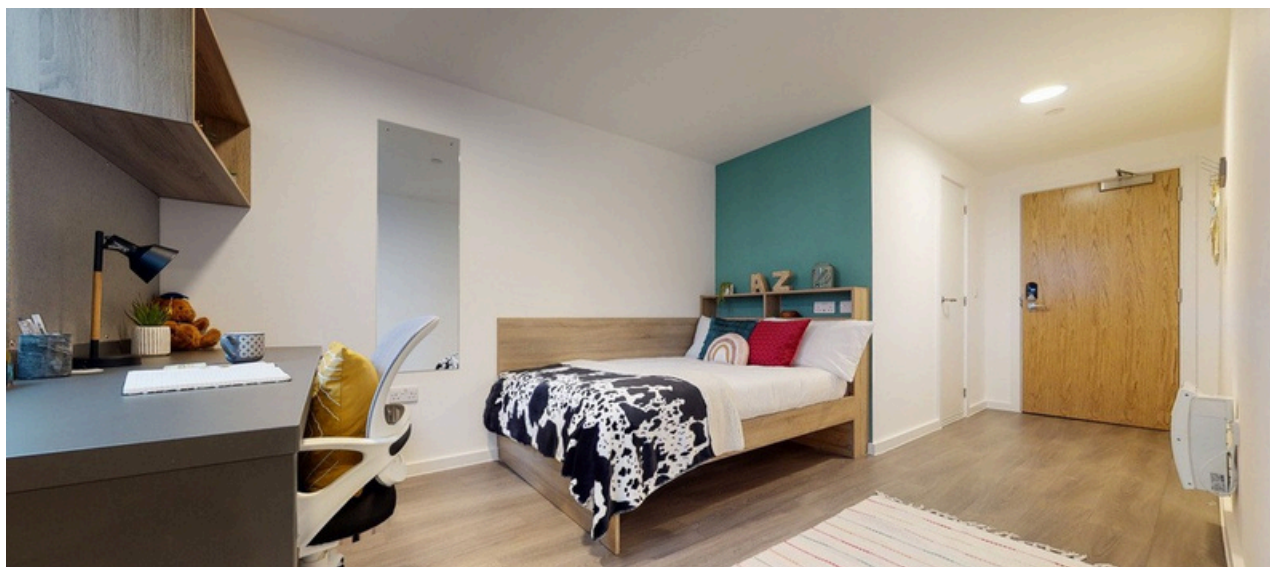
Residences

These options are more suitable for an independent student who is looking for a self-catering accommodation. All students must be 18 or older, unless otherwise noted.

All residences are subject to availability

Canvas Walthamstow

4 Forest Rd, London, E17 6JJ



LOCATION

ZONE 3 – approx. 30 minutes to LSI London Central, approx.

MINIMUM AGE

18

ROOMS

Ensuite single room, shared kitchen

PRIVATE BATHROOM

Yes, all rooms have a private bathroom with a shower.

MEALS

Self-catering. Kitchen packs are not included in the price and must be purchased separately.

FACILITIES

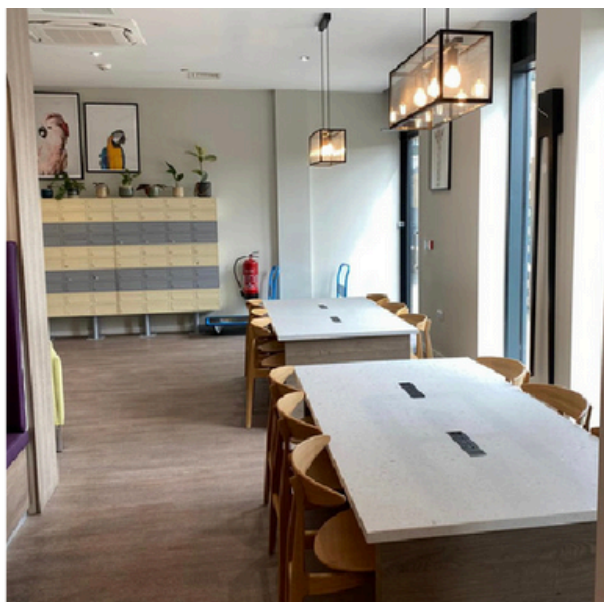
Communal study spaces, a laundry room and on-site gym are available. Additionally, there are shared social spaces for residents and a 24-hour team. Utilities, water, and wifi are included. As well as bedding and linens, with an initial kitchen pack.

CHECK-IN/CHECK-OUT TIMES

Check-in from 3:00PM. Check-out by 11:00AM.

AVAILABILITY

Sunday 1st September, 2024 - Saturday 30th August 2025.



LOCAL FACILITIES

In Walthamstow, you're in the heart of London, but a world away. With its independent shops, artisan food and street art, It's peaceful but vibrant. Quietly cultured. It suits you.

Located in a peaceful northern neighbourhood, with local entertainment and natural beauty. Nearby is the Walthamstow Wetlands which are London's newest and biggest nature reserve and Walthamstow Market, the longest market in Europe.

OTHER

LSI student placements are managed by an external agency.

TRANSPORT

The nearest tube station, Blackhorse Road, is a one minute walk away.

CANCELLATION POLICY

Free cancellation up to 4 weeks before the arrival date

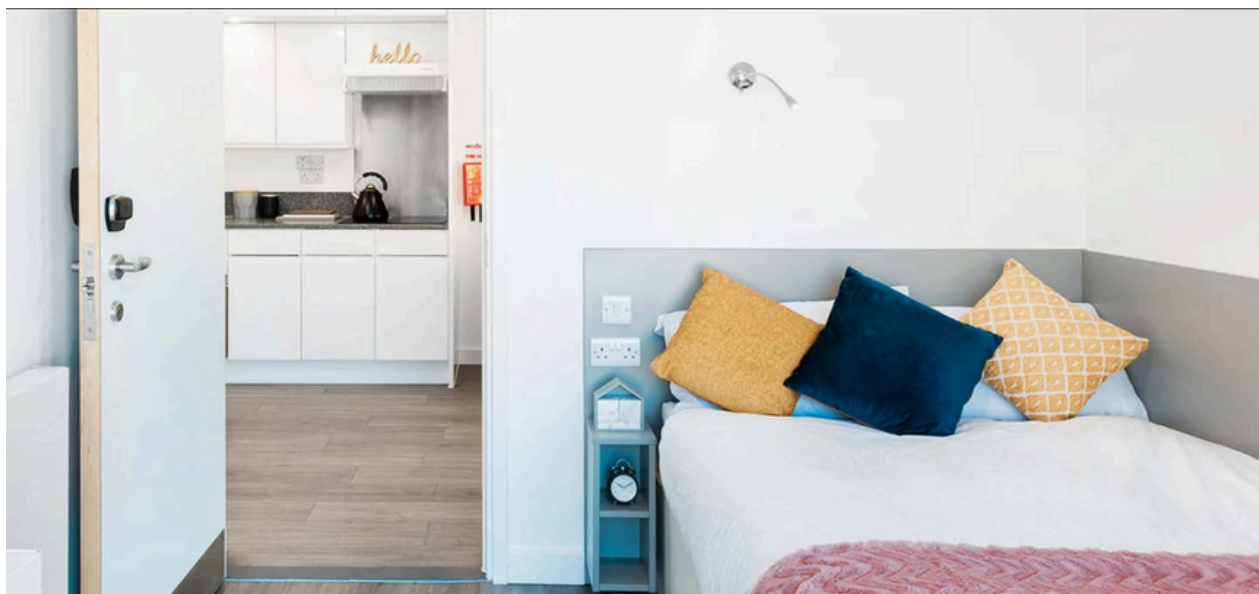
Prices (per person per week)

| | |
|-----------|---------|
| 2-3 weeks | GBP 399 |
| 4 weeks+ | GBP 380 |

Minimum stay: 2 weeks.

Chapter Lewisham Residence

46 Thurston Rd, London, SE13 7SD



LOCATION

Located approximately 40 minutes away from LSI London by public transportation.

MINIMUM AGE

18+

ROOMS

Single

PRIVATE BATHROOM

Yes, private bathrooms

MEALS

No, self catering

FACILITIES

On-site gym, study area, social spaces, on-site laundry, and games area.

TRANSPORT

Closest underground station: Lewisham

OTHER

LSI student placements are managed by an external agency.

CANCELLATION POLICY

Free cancellation up to 4 weeks before arrival.

Prices (per person per week)

| | |
|------------|---------|
| 4–12 weeks | GBP 420 |
| 12+ weeks | GBP 410 |

Minimum stay: 4 weeks (departures in October, November, and December not allowed).

Tottenham Hale House Shares

Scales Rd, London, N17 9EZ



LOCATION

Located in Zone 3, North London. Just 35 minutes by tube to LSI London.

MINIMUM AGE

18+

ROOMS

Single

PRIVATE BATHROOM

Shared bathrooms

MEALS

No, self catering

FACILITIES

The accommodation includes a fully equipped kitchen, bedding/linen provided, Wi-Fi, a TV in the living area, a garden or outdoor area, a washing machine, and a modern bathroom.

DEPOSIT

Security Deposit: GBP 250 payable 2 weeks prior to arrival. Fully refundable after check-out, provided there is no damage.

TRANSPORT

Closest underground station: Tottenham Hale Underground (Victoria Line).

OTHER

LSI student placements are managed by an external agency.

CANCELLATION POLICY

Free cancellation up to 4 weeks before arrival.

Prices (per person per week)

| | |
|-------------------------------|---------|
| Single room, 4+ weeks | GBP 299 |
| Large room en-suite, 4+ weeks | GBP 335 |
| Double/twin room, 4+ weeks | GBP 245 |
| Twin room, en-suite, 4+ weeks | GBP 250 |

Minimum stay: 4 weeks (departures in October, November, and December not allowed).

UCL, Schafer House (Summer only)

168 Drummond St, London, NW1 3HZ



LOCATION

Located in Zone 1, the heart of London. And just a 15 minute walk from LSI London.

MINIMUM AGE

18+

ROOMS

Single

PRIVATE BATHROOM

No, shared bathrooms on each floor

MEALS (OPTIONAL)

B&B and Half-Board available

Breakfast and Dinner are served at Ramsay Hall residence – 8 min walk from here

FACILITIES

Communal kitchen, social spaces, on-site laundry, computer room, bike storage, dining area. Kitchen packs are not included in the price and must be purchased separately.

AVAILABILITY

29 Jun 2025 - 9 Aug 2025

OTHER

Price includes weekly cleaning of the room and change of bed linen. Rooms are furnished with a desk, chair, bedside table, wardrobe, and mirror. The residence is mixed gender on all floors. LSI student placements managed by an external agency. Minimum stay 1 week.

TRANSPORT

Local shopping facilities are available on Tottenham Court Road. Numerous shops, restaurants, and bars within walking distance. Oxford Street and the West End are just 15-minutes away.

ARRIVALS AND DEPARTURES

Sunday to Saturday only. Check-in 3pm and check-out 10am.

CANCELLATION POLICY

Free cancellation up to 4 weeks before arrival.

Prices (per person per week)

| | |
|----------------------------|------------|
| Single room, self-catering | GBP 450.00 |
| Single room, B&B | GBP 495.00 |
| Single room, Half Board | GBP 570.00 |