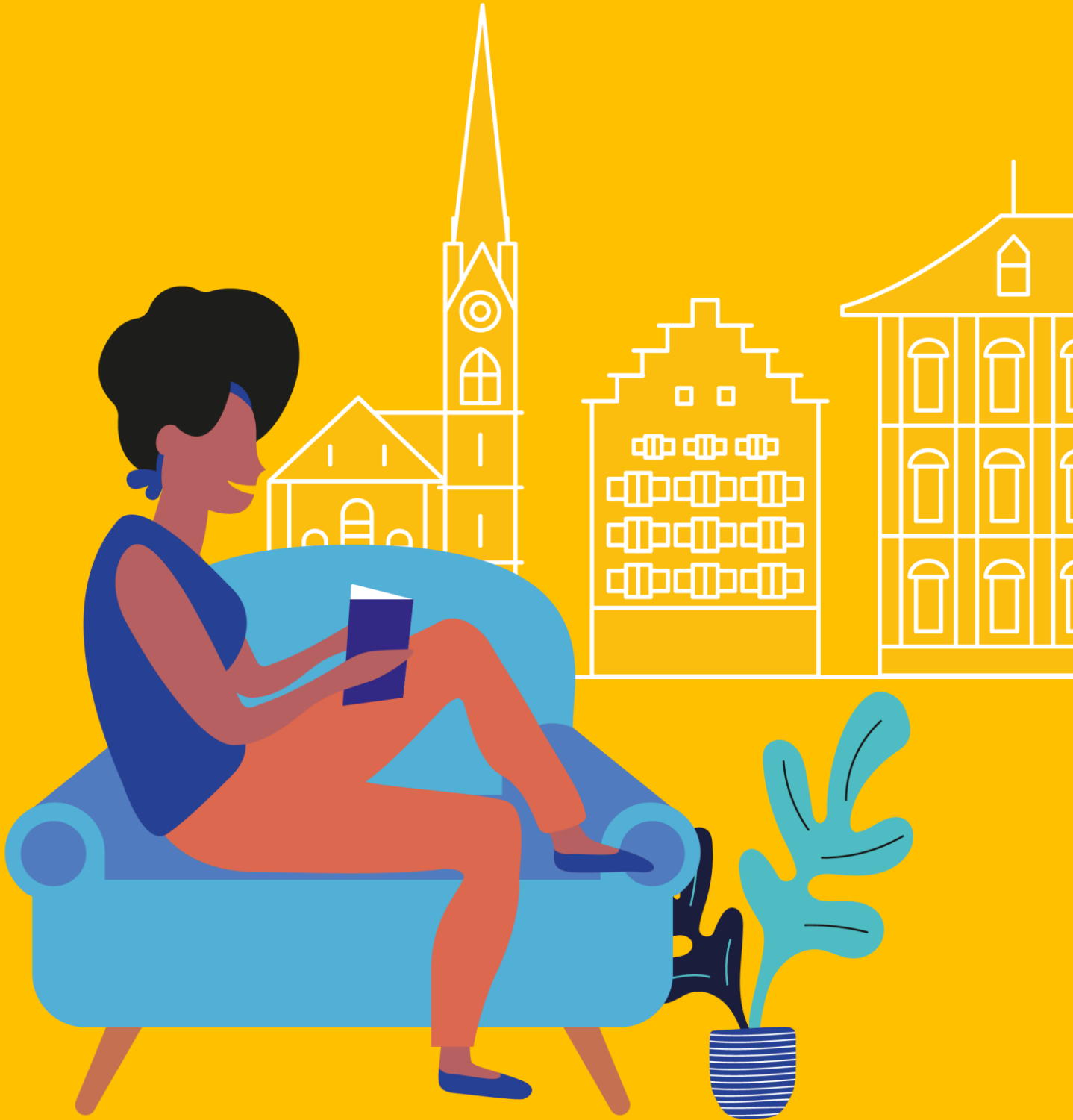


Accommodation Zurich, Switzerland 2020



Accommodation in Zurich

Accommodation placement fee: CHF 125

Homestay

Our homestays are carefully selected and offer students the opportunity to learn more about the Swiss culture in a comfortable setting while studying German in Zurich.

- Welcoming and friendly atmosphere
- Carefully selected by our Accommodation Officers and visited on a regular basis
- Choice of single rooms (or twin rooms if two students book for the same time period) with B&B or HB
- Most host families will wash the student's laundry once a week for no additional cost or will suggest nearby laundry facilities
- All bed linen and towels provided
- Good and reliable transport links
- Internet access



Executive Homestay Option

Executive Homestays are often of a higher standard than other home stay accommodation. They are evaluated in terms of décor and some have a private bathroom (en-suite or sole use) and/or extra facilities such as a television in the bedroom.

Homestay Prices

Homestay Weekly Rates (per person per week)	Price
Single room, B&B	CHF 340
Single room, HB	CHF 430
Twin room, B&B*	CHF 265
Twin room, HB*	CHF 335
Supplemental Rates (per person per week)**	Price
Executive single/twin room	CHF 85/65
Extra night in a single room, B&B	CHF 50
Extra night in a single room, HB	CHF 60
Extra night in an executive single room, B&B	CHF 60
Extra night in an executive single room, HB	CHF 75

Key

B&B = Bed and Breakfast (Breakfast only, no kitchen access); HB = Half Board (Breakfast and evening meals)

* For students booking together with the same arrival and departure dates.

** Subject to availability. Please check with the school before booking flight tickets.

Residences

These options are more suitable for an independent student who is looking for a clean and basic accommodation at an affordable price. All students must be 18 or older, unless otherwise noted.

LSI Zurich can advise on residences and availability but students are required by the Swiss law to make bookings by themselves directly with the accommodation provider.

Josephine's Guesthouse for Women

Location: 5 minute walk to the city centre and 15 minutes by tram to LSI Zurich.

Rooms: Single rooms, single rooms with balconies, single rooms with king-size beds, single corner rooms with king size beds and twin rooms

Private Bathroom: Yes, en-suite

Meals: Breakfast in price included

Facilities: Wi-Fi, community kitchen, refrigerator, common living room, rooftop terrace, laundry facilities

Prices (per person per night): Single room: from CHF 60;

Single room with balcony: from CHF 65;

Single room with king-size bed: from CHF 75;

Single corner room with king-size bed: from CHF 80;

Twin room: from CHF 100

Availability: Year-round

Other: Every two weeks housekeeping and bed linen and towels changed. Reception open during office hours and nightly security available.

Cancellation policy: Free cancellation 15 days before arrival. For cancellations less than 15 days before arrival 7 nights will be charged.



Maximilianeum 13

Location: 5 minute walk to the city centre and 10 minutes by tram to LSI Zurich.

Rooms: Single rooms with washbasins and single rooms with washbasin and balconies

Private Bathroom: No, shared on each floor

Meals: Self-catering; Breakfast and dinner from Monday to Friday can be included for an additional fee

Facilities: Wi-Fi, community kitchen, TV-room, study room, music room, laundry facilities

Prices (per person per night):

Single room with washbasin: from CHF 20;

Single room with washbasin and balcony: from CHF 26;

Availability: Year-round

Other: Bed linen provided at an extra cost of CHF 50. Final cleaning before departure charged for CHF 50.



Residences

City Backpacker – Hotel Biber

Location: Located in the heart of the old town and 10 minutes by bus to LSI Zurich.

Rooms: Single and double, triple and quadruple rooms and dormitories

Private Bathroom: No, shared on each floor

Meals: Self-catering

Facilities: Free Wi-Fi, community kitchen

Prices (per person per night): Single room: from CHF 74;

Double room: from CHF 104; Triple room: from CHF 149;

Quadruple room: from CHF 185; Dormitory: from CHF 34

Availability: Year-round

Other: Bed linens provided, in dormitories for an additional cost of CHF 3 per person available, if requested a private sleeping bag may also be used.

Check-in is not possible after 10 pm.

Cancellation policy: Free cancellation 3 days before arrival.

Charges apply on cancellations for less than 3 days if room/beds cannot be sold to somebody else.



Jugendherberge – Zurich Youth Hostel

Location: Located near the lake Zurich and 25 minutes by train and bus to LSI Zurich.

Rooms: Single, double and quadruple rooms and six-bed rooms and dormitories

Private Bathroom: No, shared bathrooms except single rooms

Meals: Breakfast in price included

Facilities: Wi-Fi, kiosk, lounge area, TV, billiard, table tennis, air hockey, courtyard, bar, storing room for bicycles, seminar rooms, parking zones, laundry facilities

Prices (per person per night): Single room: from CHF 77;

Double room: from CHF 108;

Quadruple room: from CHF 184;

Six-bed room: from CHF 240;

Dormitory: from CHF 46

Availability: Year-round

Other: Bed linen provided, towels only in double rooms provided otherwise available at the reception for an additional fee.



Hotels

LSI Zurich can advise on hotels and availability but students are required by the Swiss law to make bookings by themselves directly with the accommodation provider.

Hotel Seefeld ***

Location: Many of the city's sights and attractions are within walking distance. 10 minutes by tram to the city centre and 5 minute walk to LSI Zurich.

Rooms: Standard single rooms and twin rooms

Private Bathroom: Yes, en-suite

Meals: Breakfast in price included

Facilities: Free Wi-Fi, telephone, TV, radio, modem/fax connection, safe, mini bar, air conditioning, fitness centre, wellness facilities, terrace, parking zones

Prices (per person per night):

Single room: from CHF 225;

Twin room: from CHF 272;

Availability: Year-round

Other: Daily housekeeping, bed linens and towels provided and changed weekly

Cancellation policy: Free cancellation on most rooms.



Hotel Adler ***

Location: Within walking distance to the main sights of the old town. 5 minute walk to the famous business centre "Bahnhofstrasse" and the lake. 10 minute by train to LSI Zurich.

Rooms: Single and double rooms and suites

Private Bathroom: Yes, en-suite

Meals: Breakfast in price included

Facilities: Free Wi-Fi, free city map, TV, telephone, safe, air conditioning, mini-bar, refrigerator, terrace, restaurant

Prices (per person per night): Single room: from CHF 130;

Double room: from CHF 170; Suite: from CHF 220

Availability: Year-round

Other: Daily housekeeping, bed linens and towels provided



Hotels

The Ibis Budget Zurich City West Hotel *

Location: 15 minutes by train to the Zurich airport and to the city centre.
25 minutes by train to LSI Zurich.

Rooms: Twin, double and triple rooms

Private Bathroom: Yes, en-suite

Meals: Self-catering; breakfast available at an extra cost

Facilities: Free Wi-Fi, TV, parking zones, vending machine, air conditioning, laundry facilities

Prices (per person per night): All rooms: from CHF 80

Availability: Year-round

Other: Daily housekeeping, linens and towels provided



Hotel Marta **

Location: Located in the old town near the main railway station. 11 minutes by tram to LSI Zurich.

Rooms: Small, medium rooms and large rooms and panorama rooms

Private Bathroom: Yes, en-suite

Meals: Breakfast in price included

Facilities: Free Wi-Fi, TV, ventilator, fitness centre, coffee bar, roof terrace, lounge room, laundry facilities

Prices (per person per night): Small room: from CHF 117; Medium room: from CHF 122; Large room: from CHF 144; Street room: from CHF 113; Panorama room: from CHF 189

Other: Housekeeping service available on demand

