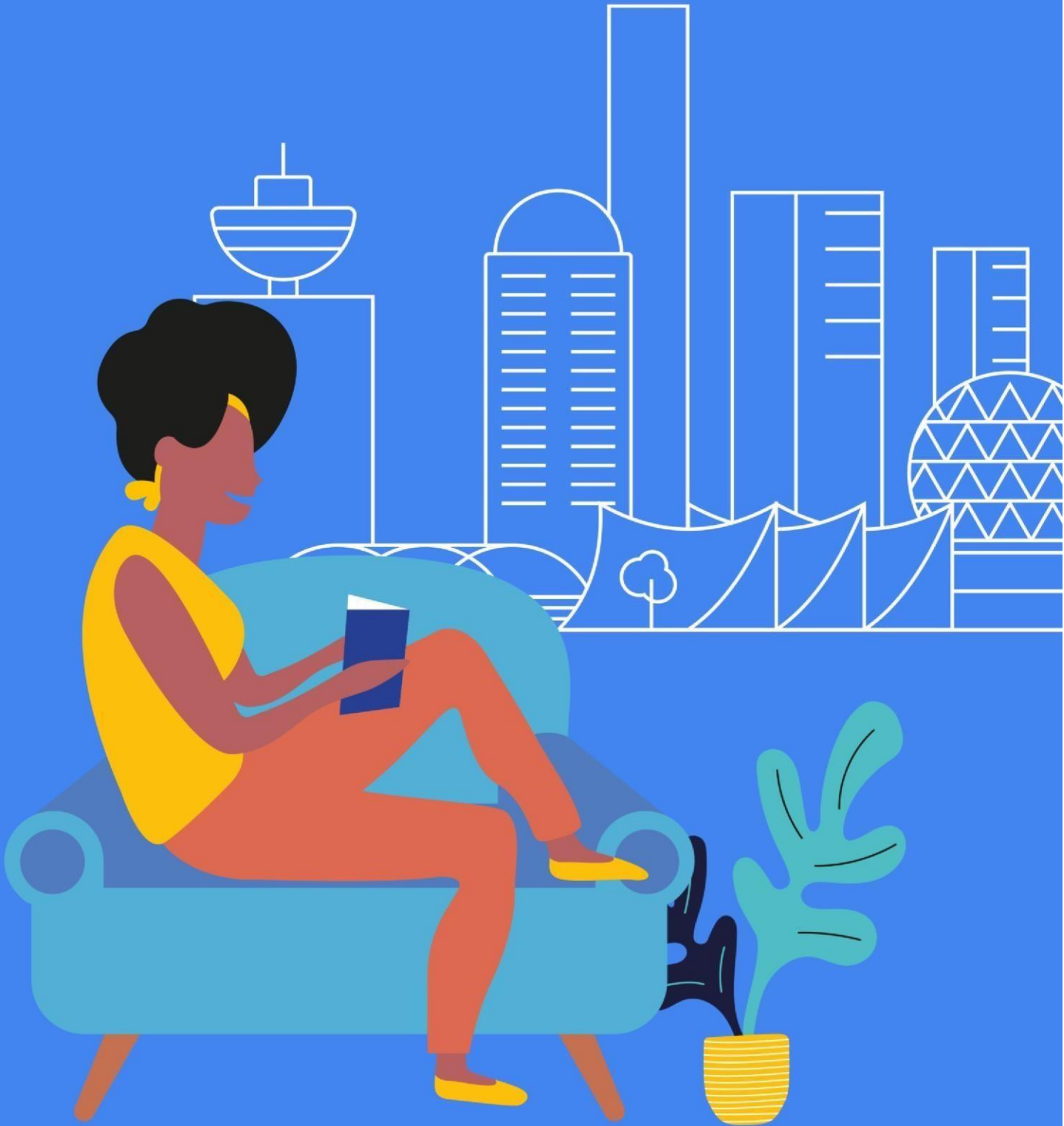


# Accommodation Vancouver, Canada

2023



# Accommodation in Vancouver

Accommodation placement fee: **CA\$215**

## Homestay

Our homestays are carefully selected and offer students the opportunity to learn more about the Canadian culture in a comfortable setting while studying English in Vancouver.

- Welcoming and friendly atmosphere
- Good and reliable transport links - average travelling distance is 60 minutes by public transportation
- Carefully selected by our Accommodation Officers and visited on a regular basis
- Choice of single rooms (or double rooms if two students book for the same time period) with bed and breakfast or half board
- Executive Supplement available
- All bed linen and towels provided



## Executive Homestay Option

Executive Homestays offer a private bathroom (en-suite or sole use). Limited availability; please contact if interested.

## Homestay Prices

### Homestay Weekly Rates (per person per week)

Single room, Bed and Breakfast	CA\$235	Twin room*, Bed and Breakfast	CA\$220
Single room, Half Board	CA\$270	Twin room*, Half Board	CA\$260
Single room, Full Board	CA\$290	Twin room*, Full Board	CA\$280

### Supplemental Rates (per person per week)

Summer Supplement (June 18 – August 27)	CA\$75	Executive Supplement (Optional)	CA\$85
Special Diets B&B/HB &FB	CA\$25/45	Christmas Supplement	CA\$50

. Please note: The U18 supplement is CA\$20

### Extra Night Rates (per person per night)\*\*

Single room, Bed and Breakfast	CA\$75	Twin room*, Bed and Breakfast	CA\$70
Single room, Half Board	CA\$80	Twin room*, Half Board	CA\$75
Single room, Full Board	CA\$85	Twin room*, Full Board	CA\$80

### Extra Night Rates, Executive (per person per night)\*\*

Single room, Bed and Breakfast	CA\$90
Single room, Half Board	CA\$95
Single room, Full Board	CA\$100

## Key

B&B = Bed and Breakfast (Breakfast only)

HB = Half Board (Breakfast and Dinner)

FB= Full Board (Breakfast, Lunch, Dinner)

*\* For students booking together with the same arrival and departure dates.*

*\*\* Subject to availability. Please check with the school before booking flight tickets. No extra nights during the summer time.*

*For cancellations made 4 weeks or more prior to the course start date, all accommodation fees are refunded, less any penalties incurred by LSI from 3rd party suppliers.*

## Residences & Hostels

These options are more suitable for an independent student who is looking for a clean and basic accommodation at an affordable price. All students must be 18 or older, unless otherwise noted.

### YWCA Hotel/Residence

**Location:** Centrally located in downtown Vancouver. 15-minute walk to LSI Vancouver.

**Rooms:** Single and double rooms

**Private Bathroom:** Yes, but limited

**Meals:** Self-catering

**Facilities:** Free Wi-Fi, air conditioning, telephone, iron and ironing boards; lounge with TV, internet, café, fitness facilities, shared kitchen, laundry facilities



#### **Prices (per person per week)**

##### **Single room, shared bathroom**

from CA\$695 (off season) to CA\$805 (peak season)

##### **Single room, private washroom**

From CA\$900 (off season) to CA\$1,400 (peak season)

##### **Twin room (double bed), private washroom**

from CA\$510 (off season) to CA\$710 (peak season)

#### **Monthly rate prices (off season only per person per week)**

**Single room, shared bathroom:** CA\$405

**Single room, private washroom:** CA\$560

**Twin room (double bed), private washroom:** CA\$575

*A non-refundable application/placement fee of CA\$230 per student is required for all bookings. This fee must be paid in advance before LSI can check availability with the residence. If the residence has no availability, the placement fee is refundable.*

**Availability:** Year-round. Peak season: June 1 – September 30 **Other:** Bed linen provided, 24 hours security.

**Note 1:** *Once a booking has been made, fees for changes and/or early checkouts will be assessed and charged. Stays longer than 4 weeks are not accepted during peak season. Monthly rates are only available for 4 week intervals, any additional weeks will be calculated at the weekly rates.*

**Note 2:** *All students must be 18 or older unless otherwise noted. A compulsory fee for minors under 18 applies.*

**Note 3:** *Any changes to the dates of the accommodation must be made with at least two weeks' notice if the student decides to postpone their course, and a fee will be applied.*

## GEC Viva

**Location:** 17-floor tower in the heart of downtown, featuring panoramic views of the city and the North Shore Mountains. 17-minute walk to LSI Vancouver.

**Rooms:** Single/double rooms, studio apartments

**Meals:** Self-catering

**Facilities:** Fully furnished apartments with equipped kitchen, bathrooms with bathtub and shower, in-suite laundry, additional storage space, unlimited high-speed wireless internet.



### Prices (per person per week)

#### Shared bedroom, shared bathroom

5-12 weeks:	CA\$375	13+ weeks:	CA\$360
-------------	---------	------------	---------

#### Sectioned (semi-private) bedroom, shared bathroom:

5-12 weeks:	CA\$415	13+ weeks:	CA\$400
-------------	---------	------------	---------

#### Private bedroom, shared bathroom

5-12 weeks:	CA\$475	13+ weeks:	CA\$450
-------------	---------	------------	---------

*Private apartments may be available upon request.*

*Refundable security deposit (2 weeks rent) and amenities fee (CA\$210) to be paid directly to GEC in order to confirm room.*

**Availability:** Year-round

**Other:** 24-hour building CCTV, housekeeping, bicycle storage.

**Note 1:** All students must be 18 or older unless otherwise noted. A compulsory fee for minors applies.

**Note 2:** Any changes to the dates of the accommodation must be made with at least two weeks' notice if the student decides to postpone their course, and a fee will be applied.

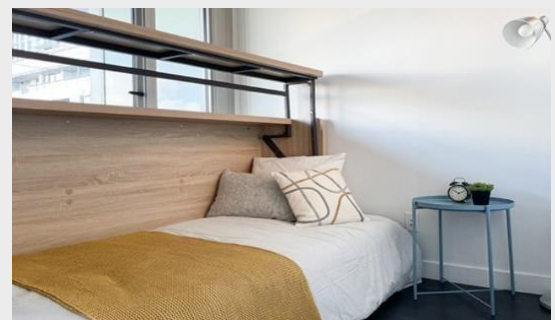
## GEC Marine Gateway

**Location:** Student residence in the heart of Vancouver. It features modern interior designs, energy-efficient amenities, and a beautifully landscaped courtyard. 25-minute by bus to LSI Vancouver.

**Rooms:** Sectioned rooms, studio apartments, one/two-bedroom apartments.

**Meals:** Self-catering

**Facilities:** Fully furnished apartments with equipped kitchen, bathrooms with bathtub and shower, in-suite laundry, additional storage space, unlimited high-speed wireless internet.



### Prices (per person per week)

#### Sectioned (semi-private) bedroom, shared bathroom

5-12 weeks:	CA\$390	13+ weeks:	CA\$375
-------------	---------	------------	---------

#### Private bedroom, shared bathroom

5-12 weeks:	CA\$545	13+ weeks:	CA\$530
-------------	---------	------------	---------

#### Studio apartment

5-12 weeks:	CA\$720	13+ weeks:	CA\$700
-------------	---------	------------	---------

#### One bedroom apartment

5-12 weeks:	CA\$820	13+ weeks:	CA\$800
-------------	---------	------------	---------

#### Two bedroom apartment

5-12 weeks:	CA\$1200	13+ weeks:	CA\$1100
-------------	----------	------------	----------

Refundable security deposit (2 weeks rent) and amenities fee (CA\$210) to be paid directly to GEC in order to confirm room.

**Availability:** Year-round

**Other:** 24-hour building CCTV, housekeeping, paid underground parking available.

**Note 1:** All students must be 18 or older unless otherwise noted. A compulsory fee for minors applies.

**Note 2:** Any changes to the dates of the accommodation must be made with at least two weeks' notice if the student decides to postpone their course, and a fee will be applied.

## GEC Pearson

**Location:** The brand-new student housing building is in a peaceful and quiet neighbourhood, with the beautiful Langara Golf Course across the street. 30-minute by bus to LSI Vancouver.

**Rooms:** Shared/sectioned rooms, private rooms, private apartments.

**Meals:** Self-catering

**Facilities:** Fully furnished apartments with equipped kitchen, bathrooms with bathtub and shower, in-suite laundry, additional storage space, unlimited high-speed wireless internet.



### Prices (per person per week)

#### Shared bedroom, shared bathroom

5-12 weeks:	CA\$380	13+ weeks:	CA\$365
-------------	---------	------------	---------

#### Section bedroom (semi-private), shared bathroom

5-12 weeks:	CA\$400	13+ weeks:	CA\$385
-------------	---------	------------	---------

#### Private bedroom, shared bathroom

5-12 weeks:	CA\$480	13+ weeks:	CA\$465
-------------	---------	------------	---------

#### Studio apartment (inclusive)

5-12 weeks:	CA\$750	13+ weeks:	CA\$735
-------------	---------	------------	---------

Refundable security deposit (2 weeks rent) and amenities fee (CA\$210) to be paid directly to GEC in order to confirm room.

**Availability:** Year-round

**Other:** 24-hour building CCTV, housekeeping, paid underground parking available, bicycle storage.

**Note 1:** All students must be 18 or older unless otherwise noted. A compulsory fee for minors applies.

**Note 2:** Any changes to the dates of the accommodation must be made with at least two weeks' notice if the student decides to postpone their course, and a fee will be applied.

**Please note: LSI reserves the right to replace residence options with similar alternatives subject to availability. Please check with the school at the time of booking.**