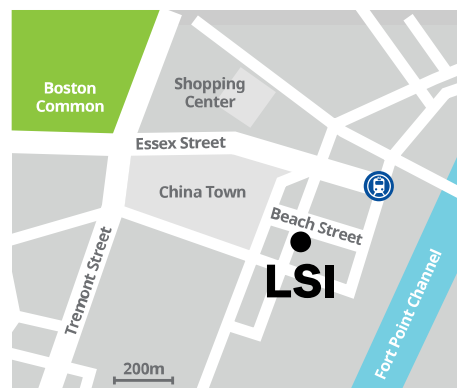


# Welcome to LSI Boston



## Contact Details

LSI Boston, 105 Beach Street,  
Boston, MA 02111

**Tel:** +1 617 542-3600

**Emergency tel:** +617-309-7743

**Email:** info-bos@lsi.edu

"I've never been outside my country before, so the opportunity to come here and meet people from different countries with different cultures is amazing."

JULIA PIETROBELI, BRAZIL

## Why LSI Boston?

- Excellent location. LSI Boston is located along the beautiful coast of Massachusetts, less than a 5-minute walk from major public transportation. One of the oldest cities in the USA, Boston is rich in cultural heritage and offers visitors a wealth of things to see and do.
- Exciting weekly social programme designed to introduce you to the city, make new friends, and complement your English language lessons. Our social programme activities are all led by our LSI staff.
- Teachers are carefully selected to ensure you have a fully-qualified, experienced, friendly and helpful hand to guide you through your studies. We know our students by name and not by number.
- LSI manages its own pool of homestays, ensuring the quality of accommodation.
- Best value language school. LSI is well known for providing an excellent academic and social program at fair prices.

## Excellent mix of nationalities

### Our students in 2024

<b>Brazil</b>	24.7%
<b>Thailand</b>	17.8%
<b>Turkey</b>	15.1%
<b>Colombia</b>	9.6%
<b>Japan</b>	4.1%
<b>Taiwan</b>	3.4%
<b>China</b>	3.4%
<b>Poland</b>	2.7%
<b>Mexico</b>	2.7%
<b>Ecuador</b>	2.1%
<b>Russia</b>	1.4%
<b>Italy</b>	1.4%



Bildungsurlaub.de

Visit the downloads  
section and select the  
'other' category.





# School Facilities

Our school facilities are designed to provide an enriching and conducive environment for learning, growth, and development.



**9 modern classrooms**



**Maximum class size 16**



**E-Learning system**



**Student computer area**



**Free WIFI**



**Student lounge**



**Roof deck**



**Student microwave**



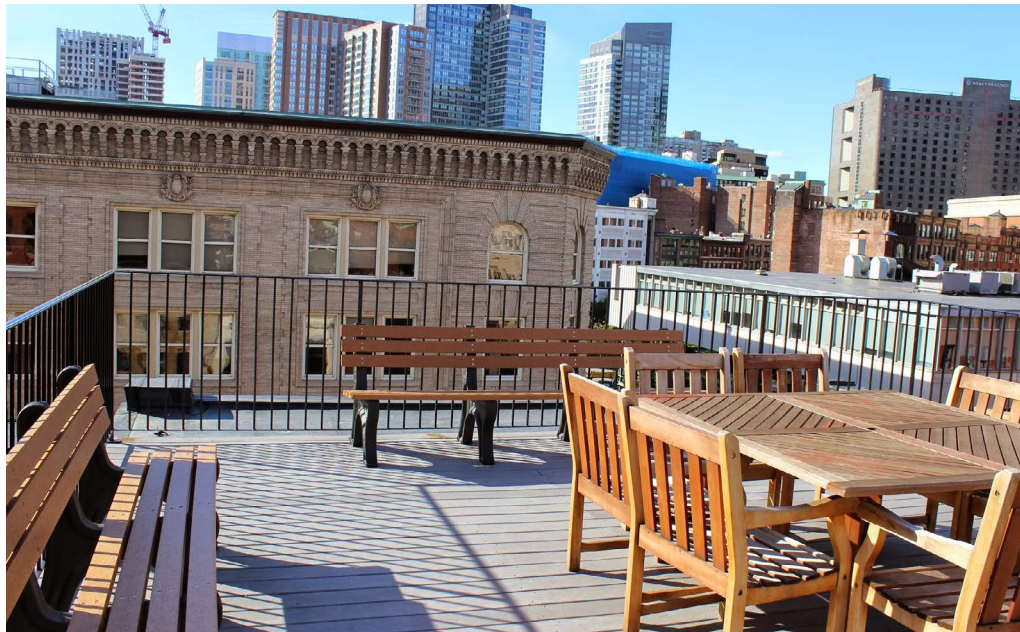
**Student fridge**



**Great location**



**Good transport links**



# Programmes

## General 20

During the lessons you rapidly improve your communication skills in a variety of everyday situations. Classes cover grammar, vocabulary, pronunciation, speaking, listening, reading and writing. You use a text book in conjunction with a wide variety of materials and exercises.

## Intensive Courses

LSI offers 25 or 30 lesson options per week on our Intensive courses. All our intensive courses consist of the General 20 course (4 lessons per day) and a range of electives to suit all levels, needs and interests (2 lessons per day).

Elective options are run twice a week on the Intensive 25, and four times a week (Monday to Thursday) on the Intensive 30 course.

LSI Boston offers the following electives:

- Academic English
- Business English
- TOEFL
- IELTS
- Cambridge English

Some elective options run on specific dates or require a minimum CEFR level of B1.

## One-to-One

Ideal for those who want extra help with general skills or more specialised topics. Our teachers work with you to develop your study plan. This course can supplement a General 20 or Intensive courses. One-to-one is the fastest way to improve your language skills and are ideal if you prefer a very personal focus on your own aims.

## Mini Group

This course combines general grammar and skills development with an in-depth focus on the language of business. The small, intensive group provides the ideal opportunity to practise negotiation, presentation and meeting skills in a realistic situation.

## Afternoon 10

For those who are short of time or may be working, Afternoon 10 gives you the perfect opportunity to brush up on your conversation skills, Business English or prepare for a range of examinations.

## SAT / GMAT

With LSI's GMAT & SAT preparation options, you'll work with a qualified and experienced instructor who will focus exclusively on your needs ensuring you achieve a higher score in a shorter time. Programme includes tuition, LSI GMAT/ SAT course materials, online GMAT/SAT practice tests and other resources, and MBA admissions guide.

Please note that a minimum of 4 weeks is required between booking and the course start date.

## English for Teaching

Aimed at speakers of other languages, this course equips students with the basic tools required to teach English as a Foreign Language and is also an excellent refresher and development course for established teachers of English. It is also suitable preparation for the Teaching Knowledge Test.

**For specific pricing and start dates for all our courses please refer to our main price list.**

### Daily Tuition Schedule, Monday to Friday

General 20 Full Time	
09:10 - 10:50	Lessons 1 & 2*
10:50 - 11:20	Break
11:20 - 13:00	Lessons 3 & 4*

Intensive 25 Full Time	
09:10 - 10:50	Lessons 1 & 2*
10:50 - 11:20	Break
11:20 - 13:00	Lessons 3 & 4*
13:00 - 13:30	Lunch
13:30 - 15:30	Lessons 5 & 6* Monday & Tuesday (2 days)

Intensive 30 Full Time	
09:10 - 10:50	Lessons 1 & 2*
10:50 - 11:20	Break
11:20 - 13:00	Lessons 3 & 4*
13:00 - 13:30	Lunch
13:30 - 15:30	Lessons 5 & 6* Monday - Thursday (4 days)

Afternoon 10 Part Time	
13:50 - 16:05	Lessons 1 & 2*

\*During busy periods the General English classes may be run at different times of the day. Please check when booking. An additional 5 minutes mini break is taken between 50 minute sessions.



# The Lifestyle

## The Location

Boston's rich history and diversity make the city a cultural hotspot, ideal for students looking to immerse themselves in live music, museums, theatre, sports, and much more. Home to the iconic Red Sox, watching a baseball game at the team's home field, Fenway Park, Boston's landmark stadium and oldest park in America, is a must!

Whether you're looking to catch a Broadway show, find out more about American history, or see some stand-up comedy, Boston has something for everyone. With more than 250,000 international students, Boston boasts a vibrant, friendly, diverse and multi cultured community, making you will feel right at home - the ideal destination if you want to learn English in the United States.

Boston has an efficient and reliable subway system, referred to as 'The T', making it easy and convenient to travel at a low cost.



[Click to visit our social media channels to learn more](#)

## Excursions

LSI Boston partner with a local tour company, 1SX World, to offer a range of day and weekend excursions to Niagara Falls, New York, and many more.

## Social Programme

Our team of bubbly activity leaders work with teachers to run an exciting programme offering a range of after school activities. A perfect way to see the sights whilst making new friends along the way.

Regular social activities include:

- Regular social activities include:
- Pub night to welcome new students
- Tour of the local area
- Museums and Exhibitions
- Art Galleries
- Karaoke
- Movie nights



# Departure Guide

Before you leave, here are some important things to remember to ensure your arrival is as smooth as possible:

## Checklist

- ☒ Passport
- ☒ Letter of acceptance and LSI documentation
- ☒ Accommodation confirmation letter (either homestay profile or residence details)
- ☒ Proof of medical/health insurance
- ☒ \$250 in cash and credit/debit cards
- ☒ Any prescription medication
- ☒ Adaptor for electrical appliances (Type A: 2 pin with standard voltage 120V or Type B: 3 pin with standard voltage 120V)
- ☒ Laptop/tablet
- ☒ SIM card that can be used in the US



## Clothing

Weather in Boston can be very unpredictable, so we advise bringing a range of clothes suitable for all climates. Please bring waterproof clothing, a raincoat, and suitable footwear.

Our activity programme may include sporting events, so it is also a good idea to bring active wear suitable for the outdoors.

The average temperature is less than 2 degrees in Winter and 25 degrees in Summer.

## Pocket money

We recommend a weekly budget \$250 to cover local travel, lunch, and activities. Credit and debit cards are widely accepted in the US, but it is a good idea to bring some cash with you.

Check with your debit/credit card company that you are able to use your card and withdraw money in the US.

We do not advise carrying around large amounts of cash.

## Bank account

If you are staying in America for three months or more you may wish to open a bank account. LSI can support you with this process when you arrive.

## When you arrive

Arriving at a foreign airport can be overwhelming. If you get lost or confused, don't be afraid to ask the airport staff for help.

If you have booked an airport transfer, an LSI representative will meet you in the arrivals hall after baggage reclaim and immigration. They will be holding an LSI sign with your name on it and will take you directly to your accommodation. If you can't find the driver or your flight is delayed, please inform the transfer company as soon as possible on +1-857-707-9161.

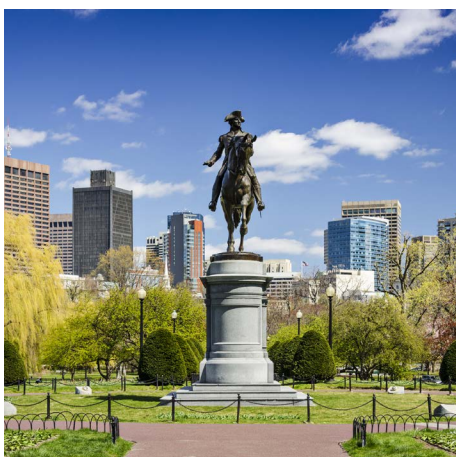
Sometimes, customs and immigration may ask you to wait while they check your travel documents. Please don't worry if this happens, it is normal procedure to check student's visas. Be calm and polite. If there are any concerns at immigration, ask the office to call the LSI Boston emergency phone: +617-309-7743.

If you have not booked an airport transfer, public transport can be found at all major airports for travel to Boston. Alternatively, you can catch a taxi from the airports taxi rank.

## First day information

Two weeks before your arrival date LSI will email you welcome information with details on how to get to school and what your first day will look like. You will also receive log in details and instructions for our E-LSI platform where you can complete our pre-arrival level test. It is important that you take the test before your first day to ensure we have the correct class ready for you.

Classes begin at 9.10am but please report to reception for 8.50am, where we will be waiting to welcome you.





# Residential Options

This option is more suitable for an independent student who is looking for a self-catering accommodation at an affordable price. All students must be 18 or older.



## ESL Townhouse

**85 Park Dr, Boston, MA 02215,  
United States**

Located in the Fenway area of Boston, a beautiful neighborhood in the city-center and popular student neighborhood, ESL Townhouse is 30 minutes by train from LSI Boston and popular city sights.





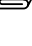

The residence offers both single and twin rooms with shared bathroom.

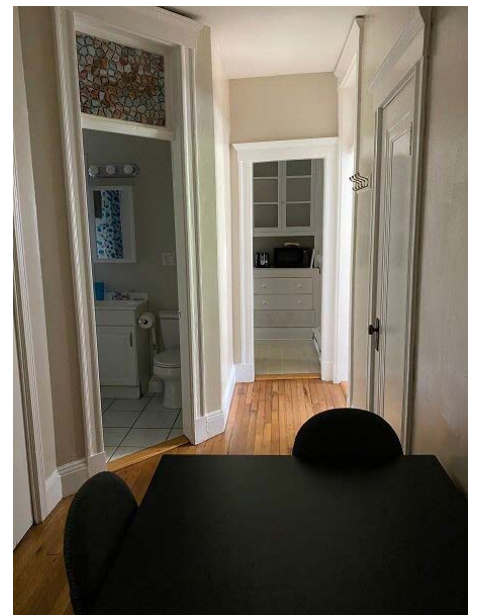
Students are responsible for changing their own bedding and cleaning their rooms during their stay. Students are also responsible for cleaning everything they use in the kitchen e.g. cups and plates.

### Arrivals and Departures

Saturday to Saturday only. Check in 2pm.  
Check out 10am.

### Facilities available:

-  Fully equipped community kitchen
-  TV
-  Telephone
-  WIFI
-  Laundry
-  Towels and bed linen provided



# Homestay Accommodation

Staying with a host family is an excellent way for you to practise English and learn about American culture and New England life. Here at LSI we carefully select and manage our own host families, ensuring high standards and a welcoming and friendly atmosphere. Commute time from homestays to LSI Boston by public transport is between 45 – 65 minutes.

Our Accommodation Co-ordinator is available to speak with you and to help whenever you need.

To help you prepare for your stay, please read the following information.

## What will my room be like?

Every homestay is unique. You are not going to a hotel so each home will be different. However, we make sure that your room has the following: a bed, a chair, a table or desk, a table lamp, a mirror, a heating appliance and chest of drawers or similar and a wardrobe.

## What services are included?

Your host will provide bed linen, towels, and will have laundry facilities available in the home or suggest local laundromats. Toiletries are not included so you will need to purchase these yourself.

## Can I use the kitchen?

Your family will provide the meals you have requested through LSI, either Breakfast only or Breakfast and Dinner (Half Board). Families will not usually allow you to use the kitchen to cook your own food or to store a lot of items in their fridge. If you have any dietary requirements or allergies please ensure you have informed LSI of these.

## About homestay meals

**Breakfast:** Usually a light meal consisting of cereal, toast, spreads, fruit, yoghurt, and a choice of tea, coffee, and juice. Hosts will usually ask you to prepare your own breakfast.

**Lunch:** You will be responsible for buying your own lunch from a local restaurant or local shop. There are many cafes and shops close by, all within walking distance of the school.

**Dinner:** You will usually eat dinner with your host, unless you have arranged otherwise. Dinners should be varied and balanced and

should include meat, fish or cheese, some carbs, vegetables and a piece of fruit or dessert. In America most families have dinner between 6pm – 8pm. Your host will inform you of their dinner time and ask that you let them know if you will not be eating with them or do not require dinner.

## Arrivals and Departures

Sunday to Sunday or Saturday to Saturday. Check in between 10am – 10pm.

## On arrival

At least one member of your family will be waiting at home to greet you on your arrival day. They will show you your room and share with you any house rules they may have; please respect these.

## Travel to school

You will have to come to school by yourself via public transportation. Your host families can help and give you instructions on how to get to school. Our accommodation confirmations also have instructions on what bus, subway, or train to catch and from where (if necessary).

## Executive homestays

Executive homestays are also available which offer a private bathroom (en suite or sole use).

**For further information and pricing please refer to our accommodation brochure.**

