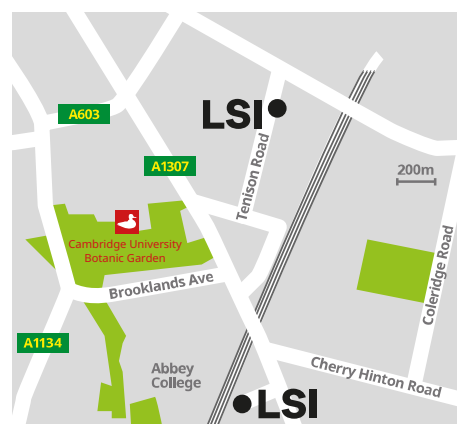


Welcome to LSI Cambridge



Contact Details

LSI Cambridge, 41 Tenison Road,
Cambridge CB1 2DG

Tel: +44 (0)1223 361 783

Emergency tel: +44 (0)7957 811110

Email: info-cam@lsi.edu

“Good class organization, I really learned new things in my class and I like the English-only zone – that’s rarely found in other schools.”

HATTAN KHEDIR DAMANHOURI, SAUDI ARABIA

Why LSI Cambridge?

- Excellent location. LSI Cambridge is located in the beautiful city of Cambridge, rich with history, and famous for its Universities and architecture.
- LSI owned residence, The Willows, located just 5-10 minutes from the city centre, offering both single rooms and studio flats. Our live-in residence supervisor offers 24/7 support.
- Exciting weekly social programme designed to introduce you to the city, make new friends, and complement your English language lessons. Our social programme activities are all led by our qualified LSI teachers.
- Teachers are carefully selected to ensure you have a fully qualified, experienced, friendly, and helpful hand to guide you through your studies.
- LSI manages its own pool of homestays, operating within a 30-minute catchment area from school, ensuring the quality of accommodation.
- Best value language school. LSI is well known for providing an excellent academic and social programme at fair prices.
- Excellent student care. Weekly meetings with the Director of Studies or school Welfare Officer, as well as regular Study Clubs provide every student with the opportunity for academic and personal support outside of the classroom.
- LSI Cambridge has a large, beautiful garden; the perfect spot for social activities and Summer BBQ’s.

Excellent mix of nationalities

Our students in 2024

Italy	20.8%
Turkey	7%
Chile	5.7%
France	5.6%
Spain	5.7%
Saudi Arabia	5.1%
Romania	5.1%
Taiwan	5.1%
China	4.7%
Japan	4.5%
Germany	4.1%
Argentina	4%

Visit the downloads section and select the 'other' category.



School Facilities

Our school facilities are designed to provide an enriching and conducive environment for learning, growth, and development.



12 modern classrooms



E-Learning System



Garden



Student Microwave



Coffee machine



Self-Study Area



Maximum class size 15



Student lounge



Student Computers



Free WIFI



Great Location



Programmes

General 20

During the lessons you rapidly improve your communication skills in a variety of everyday situations. Classes cover grammar, vocabulary, pronunciation, speaking, listening, reading and writing. You use a text book in conjunction with a wide variety of materials and exercises.

Intensive Courses

LSI offers 24 or 30 lesson options per week on our Intensive courses. All our intensive courses consist of the General 20 course (4 lessons per day) and a range of electives to suit all levels, needs and interests (2 lessons per day).

Elective options are run twice a week on the Intensive 24, and five times a week (Monday – Friday) on the Intensive 30 course.

LSI Brighton offers the following electives:

• Business English

• TOEFL

• IELTS

• Cambridge English

Some elective options run on specific dates or require a minimum CEFR level of B1.

Afternoon 10

For those who are short of time or may be working, Afternoon 10 gives you the perfect opportunity to brush up on your conversation skills, Business English or prepare for a range of examinations.

One-to-One

Ideal for those who want extra help with general skills or more specialised topics. Our teachers work with you to develop your study plan. This course can supplement a General 20 or Intensive courses. One-to-one is the fastest way to improve your language skills and are ideal if you prefer a very personal focus on your own aims.

Club 40

At LSI we welcome young-at-heart mature students of all ages throughout the year. The Club 40+ programme combines our General 20 course with a unique activity programme specifically designed around the interest of our more mature students. For more information please refer to our Club 40 mini brochure.

9 Day Compact

For people with special aims which must be met in a short space of time. Requiring just one week away from the office, this course is ideal for busy professionals and executives who need to prepare for presentations and meetings in a foreign language.

For specific pricing and start dates for all our courses please refer to our main price list.

Daily Tuition Schedule, Monday to Friday

General 20 Full Time (16.7hrs per week)	
09:00 - 10:40	Lessons 1 & 2*
10:40 - 11:00	Break
11:00 - 12:40	Lessons 3 & 4*

Intensive 24 Full Time (20hrs per week)	
09:00 - 10:40	Lessons 1 & 2*
10:40 - 11:00	Break
11:00 - 12:40	Lessons 3 & 4*
12:40 - 13:40	Lunch
13:40 - 15:20	Lessons 5 & 6* 2 days per week

Intensive 30 Full Time (25hrs per week)	
09:00 - 10:40	Lessons 1 & 2*
10:40 - 11:00	Break
11:00 - 12:40	Lessons 3 & 4*
12:40 - 13:40	Lunch
13:40 - 15:20	Lessons 5 & 6*

Afternoon 10 Part Time (8.3hrs per week)	
13:40 - 15:20	Lessons 1 & 2*

*During busy periods the General English classes may be run at different times of the day. Please check when booking. An additional 5 minutes mini break is taken between 50 minute sessions.

The Lifestyle

The Location

Cambridge is a picturesque city located on the banks of the River Cam and surrounded by beautiful countryside. With its historical architecture, famous Universities, museums, and art galleries, the city is a heaven for those wanting to learn about British culture. The city's thriving cultural scene offers a variety of theatres and festivals, making it a popular destination for students.

Cambridge has excellent public transportation links, with London only 50 minutes away by train.

Excursions

LSI Cambridge partner with a local tour company to offer day and weekend excursions to London, Brighton, York, Stratford-upon-Avon, Edinburgh, Paris, Amsterdam, and many more! A perfect way to see the sights whilst making new friends along the way.

Social Programme

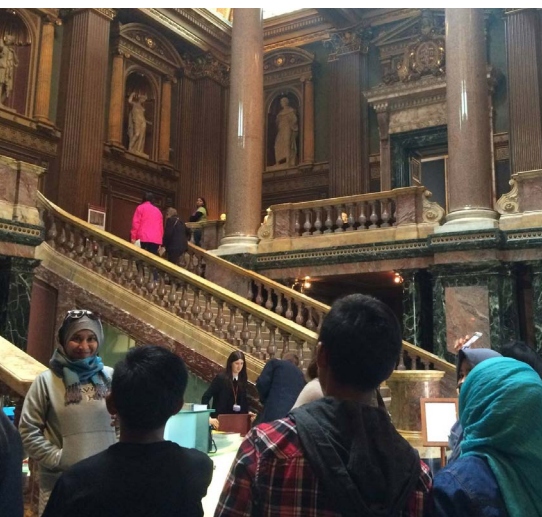
Our team of bubbly activity leaders work with teachers to run an exciting programme offering a range of after school activities.

Regular social activities include:

- Pub night to welcome new students
- Tour of the local area
- Museums and Exhibitions
- Theatre
- Sporting events
- Quiz and games nights
- Barbecues



**Click to visit our
social media
channels to
learn more**

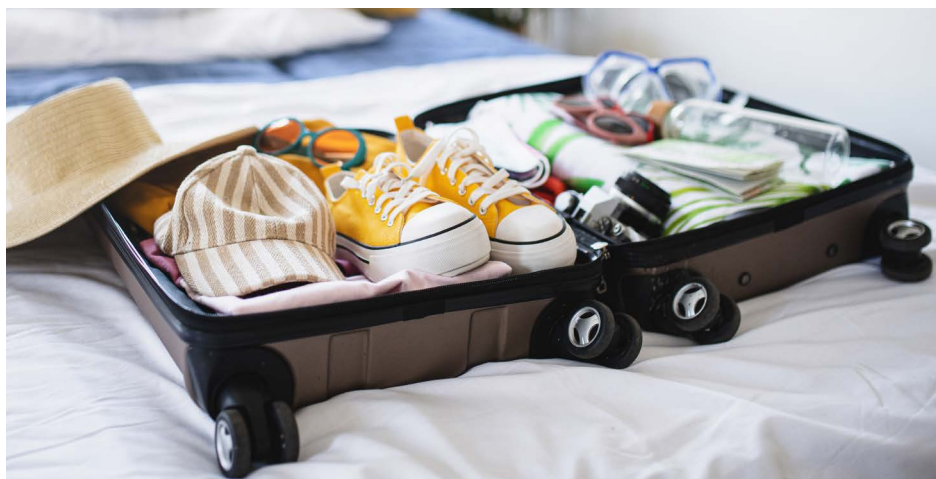


Departure Guide

Before you leave, here are some important things to remember to ensure your arrival is as smooth as possible:

Checklist

- ☒ Passport
- ☒ Letter of acceptance and LSI documentation
- ☒ Accommodation confirmation letter (either homestay profile or residence details)
- ☒ Proof of medical/health insurance
- ☒ £150 in cash and credit/debit cards
- ☒ Any prescription medication
- ☒ Adaptor for electrical appliances (Type G: 3 pin with standard voltage 230V)
- ☒ Laptop/tablet
- ☒ SIM card that can be used in the UK



Clothing

English can be very unpredictable (even in Summer!), so we advise bringing a range of clothes suitable for all climates. Please bring waterproof clothing, a raincoat, and suitable footwear.

Our activity programme may include sporting events, so it is a good idea to bring active wear or clothing suitable for the outdoors.

The average temperature is around 5 degrees in Winter and 20 degrees in summer.

Pocket money

We recommend a weekly budget of £150 to cover local travel, lunch, and activities. You will need additional money if you wish to take weekend trips. Credit and debit cards are widely accepted in Cambridge, but it is a good idea to bring some cash with you.

Check with your debit/credit card company that you are able to use your card and withdraw money in the UK.

We do not advise carrying around large amounts of cash.

Bank account

If you are staying in the UK for three months or more you may wish to open a bank account. LSI can support you with this process when you arrive.

When you arrive

Arriving at a foreign airport can be overwhelming. If you get lost or confused, don't be afraid to ask the airport staff for help.

If you have booked an airport transfer, an LSI representative will meet you in the arrivals hall after baggage reclaim and immigration. They will be holding an LSI sign with your name on it and will take you directly to your accommodation. If you can't find the driver or your flight is delayed, please inform the transfer company as soon as possible on +44 (0)1223 715715.

Sometimes, customs and immigration may ask you to wait while they check your travel documents. Please don't worry if this happens, it is normal procedure to check student's visas. Be calm and polite. If there are any concerns at immigration, ask the office to call the LSI Cambridge emergency phone: +44 (0)7957 811110.

If you have not booked an airport transfer, public transport can be found at all major airports for travel to Cambridge. The National Express coach service is available with regular journeys to Cambridge and is often the cheapest mode of transport. There are coach stops in every airport terminal where you can buy tickets.

First day information

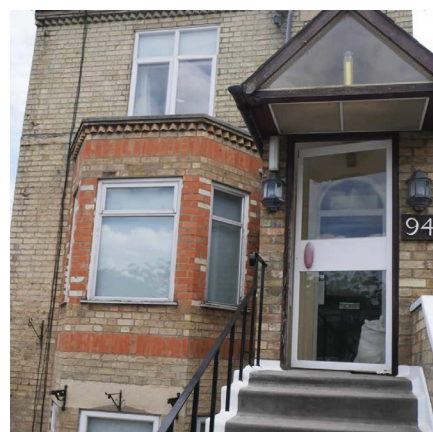
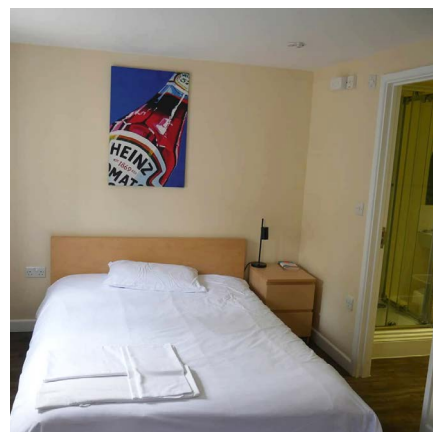
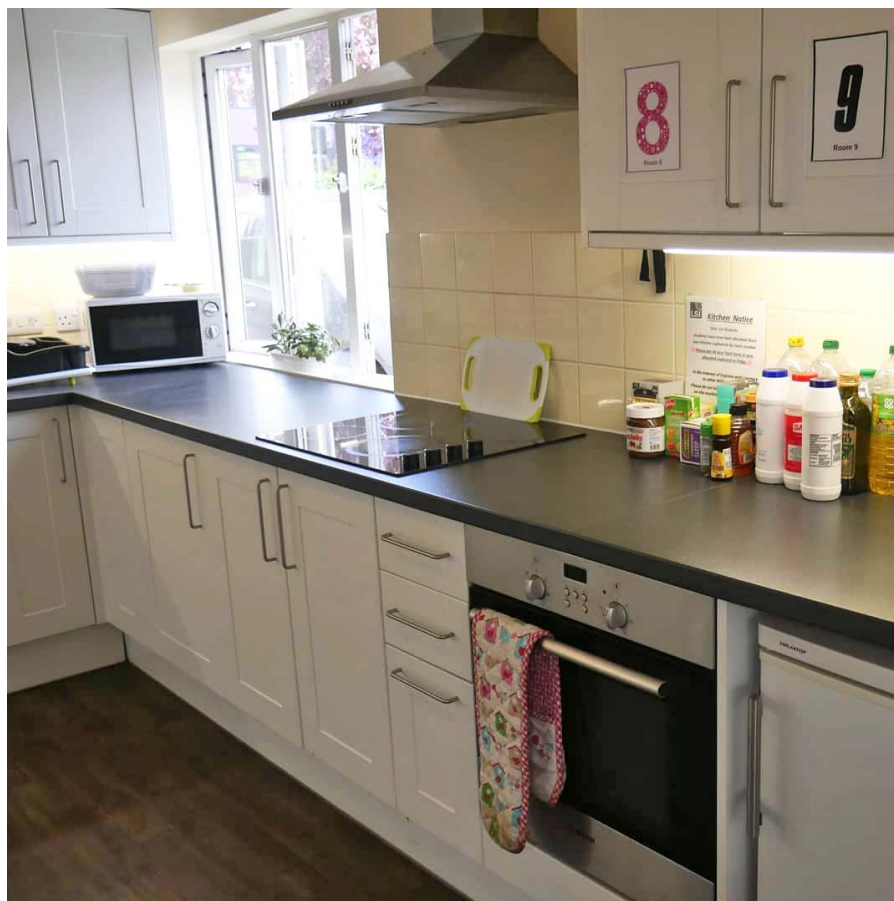
Two weeks before your arrival date LSI will email you welcome information with details on how to get to school and what your first day will look like. You will also receive log in details and instructions for our E-LSI platform where you can complete our pre-arrival level test. It is important that you take the test before your first day to ensure we have the correct class ready for you.

Classes begin at 9am but please report to reception for 8.30am, where we will be waiting to welcome you.



Residential Option

This option is more suitable for an independent student who is looking for a self-catering accommodation at an affordable price. All students must be 18 or older.



The Willows

94 Milton Road, Cambridge, CB4 1LA

LSI Cambridge's own residence that is located in the heart of the city centre. Our live-in residence warden is here to support you with anything you may need during your stay.








Offering fully furnished single rooms with a shared private bathroom, or studio flats.

Students are responsible for changing their own bedding and tidying their rooms during their stay. Students are also responsible for cleaning everything they use in the kitchen e.g. cups and plates. The residence warden cleans the bedrooms once per week and communal areas daily.

Arrivals and Departures

Sunday to Sunday. Check in between 12pm – 8pm. Check out 10am.

Facilities available:

-  Fully equipped kitchen
-  Laundry
-  Bed linen provided
-  Internet
-  Lounge
-  Dining area
-  Pool table

Homestay Accommodation

Staying with a host family is an excellent way for you to practise English and learn about British life. Here at LSI we carefully select and manage our own host families, ensuring high standards and a welcoming and friendly atmosphere. Commute time from homestays to LSI Cambridge by public transport can be up to 30 minutes.

Our Accommodation Co-ordinator is available to speak with you and to help whenever you need.

To help you prepare for your stay, please read the following information.

What will my room be like?

Every homestay is unique. You are not going to a hotel so each home will be different. However, we make sure that your room has the following: a bed, a chair, a table or desk, a table lamp, a mirror, a heating appliance and chest of drawers or similar and a wardrobe.

What services are included?

Your host will provide bed linen, towels, and will wash your laundry once per week. Toiletries are not included so you will need to purchase these yourself.

Can I use the kitchen?

Your family will provide the meals you have requested through LSI, either Breakfast only or Breakfast and Dinner (Half Board). Families will not usually allow you to use the kitchen to cook your own food or to store a lot of items in their fridge. If you have any dietary requirements or allergies please ensure you have informed LSI of these.

About homestay meals

Breakfast: Usually a light meal consisting of cereal, toast, spreads, fruit, yoghurt, and a choice of tea, coffee, and juice. Hosts will usually ask you to prepare your own breakfast.

Lunch: You will be responsible for buying your own lunch from a local restaurant or local shop. There are many cafes and shops all within walking distance of the school.

Dinner: You will usually eat dinner with your host, unless you have arranged otherwise. Dinners should be varied and balanced and should include meat, fish or cheese, some carbs, vegetables and a piece of fruit or

dessert. In the UK most host families have dinner between 6pm and 7pm. Your host will inform you of their dinner time and ask that you let them know if you will not be eating with them or do not require dinner.

Arrivals and Departures

Saturday to Saturday or Sunday to Sunday. Check in between 10am - 10pm and check-out 10am.

On arrival

At least one member of your family will be waiting at home to greet you on your arrival day. They will show you your room and share with you any house rules they may have; please respect these.

Travel to school

You will have to come to school by yourself via public transportation. Your host families can help and give you instructions on how to get to school. Our accommodation confirmations also have instructions on what bus to catch and from which stop (if necessary).

Executive homestays

Executive homestays are also available which offer a private bathroom (ensuite or sole use).

For further information and pricing please refer to our accommodation brochure.

