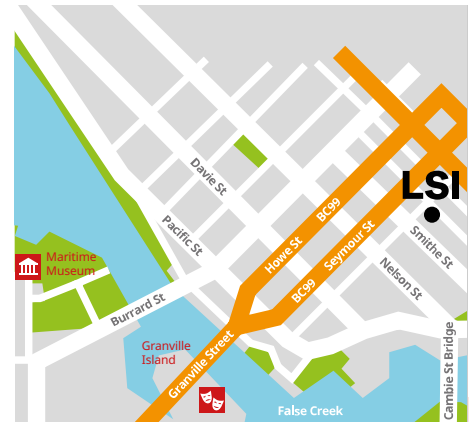


Welcome to LSI Vancouver



Contact Details

LSI Vancouver, 2nd Floor, 806 Homer Street, Vancouver V6B 2W5

Tel: +1 604 683 7654

Emergency tel: +1 604-603-1351

Email: info-van@lsi.edu

LSI Contact List: www.lsi.edu/school_contacts.pdf

"My 5 months at LSI were really worthwhile. I particularly liked the style of teaching and the topics that we talked about during class. I will never forget my friends and my experience at LSI."

MAELYS VESIR, NEW CALEDONIA

Why LSI Vancouver?

- Fantastic location. LSI Vancouver is located on the bustling corner of Homer and Robson streets, nestled between lush mountains and forests and the Pacific Ocean.
- Exciting weekly social programme designed to introduce you to the city, make new friends, and complement your English language lessons. Our social programme activities are all led by our qualified LSI teachers.
- Teachers are carefully selected to ensure you have a fully qualified, experienced, friendly, and helpful hand to guide you through your studies.
- Best value language school. LSI is well known for providing an excellent academic and social programme at fair prices.
- Excellent student care. Upon request, weekly meetings with the Director of Studies, as well as regular Job Clubs and Grammar Doctors, provide every student with the opportunity for academic and personal support outside of the classroom.

Excellent mix of nationalities

Our students in 2024

Japan	28.4%
Brazil	13.5%
Germany	7.8%
Korea (South)	7%
Colombia	4.9%
Iran	4.7%
Taiwan	4.2%
Mexico	3.6%
Peru	3.4%
China	2.6%
France	2.3%

Visit the downloads section and select the 'other' category.



School Facilities

Our school facilities are designed to provide an enriching and conducive environment for learning, growth, and development.



12 modern classrooms



Maximum class size 17



E-Learning System



Student Microwave



Student fridge



Student lounge



Free WIFI



Free materials



Good transport links



Great location



Wheelchair access



Terrace



Programmes

General 20

During the lessons you rapidly improve your communication skills in a variety of everyday situations. Classes cover grammar, vocabulary, pronunciation, speaking, listening, reading and writing. You use a text book in conjunction with a wide variety of materials and exercises.

Intensive Courses

LSI offers 25 or 30 lesson options per week on our Intensive courses. All our intensive courses consist of the General 20 course (4 lessons per day) and a range of electives to suit all levels, needs and interests (2 lessons per day).

Elective options are run twice a week on the Intensive 25, and four times a week (Monday to Thursday) on the Intensive 30 course.

LSI Vancouver offers the following electives:

- Fluency
- Academic English
- Business English
- TOEFL
- IELTS
- Cambridge English

Some elective options run on specific dates or require a minimum CEFR level of B1.

Afternoon 10

For those who are short of time or may be working, Afternoon 10 gives you the perfect opportunity to brush up on your conversation skills, Business English or prepare for a range of examinations.

One-to-One

Ideal for those who want extra help with general skills or more specialised topics. Our teachers work with you to develop your study plan. This course can supplement a General 20 or Intensive courses. One-to-one is the fastest way to improve your language skills and are ideal if you prefer a very personal focus on your own aims.

Mini Group

This course combines general grammar and skills development with an in-depth focus on the language of business. The small, intensive group provides the ideal opportunity to practise negotiation, presentation and meeting skills in a realistic situation.

Club 40

At LSI we welcome young-at-heart mature students of all ages throughout the year. The Club 40+ programme combines our General 20 course with a unique activity programme specifically designed around the interest of our more mature students. For more information please refer to our Club 40 mini brochure.

9 Day Compact

For people with special aims which must be met in a short space of time. Requiring just one week away from the office, this course is ideal for busy professionals and executives who need to prepare for presentations and meetings in a foreign language.

For specific pricing and start dates for all our courses please refer to our main price list.

Daily Tuition Schedule, Monday to Friday

General 20 Full Time	
09:00 - 10:40	Lessons 1 & 2*
10:40 - 11:00	Break
11:00 - 12:40	Lessons 3 & 4*

Intensive 25 Full Time	
09:00 - 10:40	Lessons 1 & 2*
10:40 - 11:00	Break
11:00 - 12:40	Lessons 3 & 4*
12:40 - 13:30	Lunch
13:30 - 15:45	Lessons 5 & 6* 2 days per week

Intensive 30 Full Time	
09:00 - 10:40	Lessons 1 & 2*
10:40 - 11:00	Break
11:00 - 12:40	Lessons 3 & 4*
12:40 - 13:30	Lunch
13:30 - 15:45	Lessons 5 & 6* 4 days per week

Afternoon 10 Part Time	
13:30 - 15:45	Lessons 1 & 2* 4 days per week

*During busy periods the General English classes may be run at different times of the day. Please check when booking. An additional 5 minutes mini break is taken between 50 minute sessions.

The Lifestyle

The Location

Vancouver has repeatedly been recognised as one of the world's best places to live. Located between the breathtaking snow-capped Coast Mountains and the Pacific Ocean, a truly beautiful destination for anyone who wants to learn English in Canada. Renowned for its temperate climate, stunning scenery, and multicultural environment, Vancouver is the perfect city for international students.

Vancouver has an efficient and reliable public transport system, making it easy and convenient to travel at a low cost.

Excursions

LSI Vancouver partner with a local tour company to offer day and weekend excursions to Seattle, Whistler, Grouse Mountain, Kitsilano Beach, Victoria, Rocky Mountains and many more!

A perfect way to see the sights whilst making new friends along the way.

Social Programme

Our team of bubbly activity leaders also run an exciting programme offering a range of after school activities.

Regular social activities include:

- Pub night to welcome new students
- Tour of the local area
- Museums and Exhibitions
- Art galleries
- Movie nights
- Hockey games
- Beach trips



**Click to visit our
social media
channels to
learn more**



Departure Guide

Before you leave, here are some important things to remember to ensure your arrival is as smooth as possible:

Checklist

- ☒ Passport
- ☒ Letter of acceptance and LSI documentation
- ☒ Accommodation confirmation letter (either homestay profile or residence details)
- ☒ Proof of medical/health insurance
- ☒ £150 in cash and credit/debit cards
- ☒ Any prescription medication
- ☒ Adaptor for electrical appliances (Type A or B: 2 pin with standard voltage 120V)
- ☒ Laptop/tablet
- ☒ SIM card that can be used in Canada



Clothing

Canada's four seasons mean weather will vary extremely depending on the time of year you travel. In Summer there is beach weather and in Winter plenty of snow for skiing! We advise bringing a range of clothes suitable for all climates. Please bring waterproof clothing, a raincoat and suitable footwear.

Our activity programme may include sporting events, so it is also a good idea to bring active wear suitable for the outdoors.

The average temperature is around -10 degrees in Winter and 25 degrees in Summer.

Pocket money

We recommend a weekly budget \$250 to cover local travel, lunch, and activities. Credit and debit cards are widely accepted in Canada, but it is a good idea to bring some cash with you.

Check with your debit/credit card company that you are able to use your card and withdraw money in Canada.

We do not advise carrying around large amounts of cash.

Bank account

If you are staying in Canada for three months or more you may wish to open a bank account. LSI can support you with this process when you arrive.

When you arrive

If you have booked an airport transfer, please refer to the document 'Confirmation of Flight and Transfer Details' that you will receive along with your accommodation confirmation. This document will include details on where your driver will be waiting for you at the airport

and their contact number should you need it. If your flight is delayed or cancelled, please inform us as soon as possible. If you need to contact your driver please use the contact details provided on the transfer confirmation.

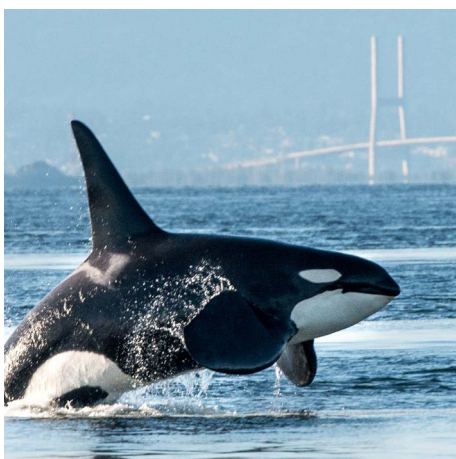
Sometimes, customs and immigration may ask you to wait while they check your travel documents. Please don't worry if this happens, it is normal procedure to check student's visas. Be calm and polite. If there are any concerns at immigration, ask the office to call the LSI Vancouver emergency phone: +1 604-603-1351.

If you have not booked an airport transfer, public transport can be found at all major airports for travel to Vancouver. Translink is Vancouver's public transportation system and is made up of a network of buses, the SkyTrain, and the SeaBus. Outside the airport, using Canada Line from YVR-Airport Station, you can get to Downtown Vancouver within 30 minutes! Click [here](#) for the airport's information about public transportation in Vancouver. Alternatively, you can use Uber or Lyft to arrange a taxi.

First day information

Two weeks before your arrival date LSI will email you welcome information with details on how to get to school and what your first day will look like. You will also receive log in details and instructions for our E-LSI platform where you can complete our pre-arrival level test. It is important that you take the test before your first day to ensure we have the correct class ready for you.

Classes begin at 9am but please report to reception for 8.30am, where we will be waiting to welcome you.



Residential Options

These options are more suitable for an independent student who is looking for a self-catering accommodation at an affordable price. All students must be 18 or older.



YWCA Hotel

733 Beatty St, Vancouver, BC V6B 2M4, Canada










YWCA is located in downtown Vancouver, just a 15-minute walk to LSI Vancouver. Offering fully furnished single rooms with shared or semi-private wash rooms.

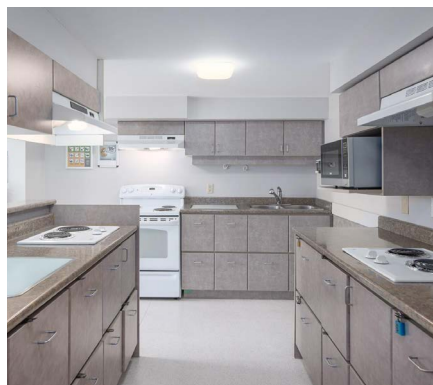
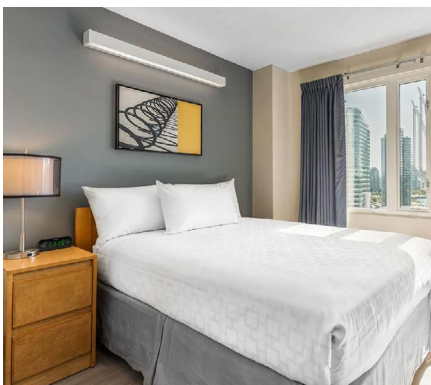
Students are responsible for changing their own bedding and cleaning their rooms and common areas during their stay. Students are also responsible for cleaning everything they use in the kitchen e.g. cups and plates.

Arrivals and Departures

Saturday to Saturday. Check in 2pm. Check out 10am.

Facilities available:

-  Fully equipped kitchen
-  Laundry
-  Bed linen provided
-  Air conditioning
-  Internet
-  Iron and ironing board
-  Lounge with TV
-  Fitness facilities
-  24/7 security



GEC

GEC Marine Gateway, 8101 Nunavut Ln, Vancouver, BC V5X 0E3, and GEC Pearson, 7657 Cambie St, Vancouver, BC V6P 3H8, GEC King Edward, 431 W King Edward Avenue, Vancouver, BC V5Y 2J3

GEC Marine Gateway is located in the heart of Vancouver just a 25-minute bus to LSI Vancouver.





GEC Pearson is located in a peaceful and quiet neighbourhood a 30-minute bus journey from LSI Vancouver.

GEC King Edward is located in the city's vibrant heart close to Queen Elizabeth Park, 20 minutes by transit to LSI Vancouver.

Each location offers a range of rooms and apartments.

Students are responsible for changing their own bedding, cleaning their rooms and communal areas and cleaning everything they use in the kitchen e.g. cups and plates.

Facilities available:

-  Laundry
-  Bed linen provided
-  Fully equipped kitchen
-  Internet

Arrivals and Departures

Saturday to Saturday or Sunday to Sunday. Check in 4pm. Check out 10am

Homestay Accommodation

Staying with a host family is an excellent way for you to practise English and learn about Canadian life. Here at LSI we carefully select and manage our own host families, ensuring high standards and a welcoming and friendly atmosphere. Commute time from homestays to LSI Vancouver by public transport is around 60 minutes on average.

Our Accommodation Co-ordinator is available to speak with you and to help whenever you need.

To help you prepare for your stay, please read the following information.

What will my room be like?

Every homestay is unique. You are not going to a hotel so each home will be different. However, we make sure that your room has the following: a bed, a chair, a table or desk, a table lamp, a mirror, a heating appliance and chest of drawers or similar and a wardrobe.

What services are included?

Your host will provide bed linen, towels, and will wash your laundry once per week. Toiletries are not included so you will need to purchase these yourself.

Can I use the kitchen?

Your family will provide the meals you have requested through LSI, either Breakfast only or Breakfast and Dinner (Half Board). Families will not usually allow you to use the kitchen to cook your own food or to store a lot of items in their fridge. If you have any dietary requirements or allergies please ensure you have informed LSI of these.

About homestay meals

Breakfast: Usually a light meal consisting of cereal, toast, spreads, fruit, yoghurt, and a choice of tea, coffee, and juice. Hosts will usually ask you to prepare your own breakfast.

Lunch: You will be responsible for buying your own lunch from a local restaurant or local shop. There are many cafes and shops close by, all within walking distance of the school.

Dinner: You will usually eat dinner with your host, unless you have arranged otherwise. Dinners should be varied and balanced and should include meat, fish or cheese,

some carbs, vegetables and a piece of fruit or dessert. Most host families have dinner between 6pm and 7pm. Your host will inform you of their dinner time and ask that you let them know if you will not be eating with them or do not require dinner.

Arrivals and Departures

Saturday to Saturday or Sunday to Sunday. Check in between 10am – 10pm and check out 10am.

On arrival

At least one member of your family will be waiting at home to greet you on your arrival day. They will show you your room and share with you any house rules they may have; please respect these.

Travel to school

You will have to come to school by yourself via public transportation. Your host families can help and give you instructions on how to get to school. Our accommodation confirmations also have instructions on what bus or subway to catch and from where (if necessary).

Executive homestays

Executive homestays are also available which offer a private bathroom (en suite or sole use).

For further information and pricing please refer to our accommodation brochure.

