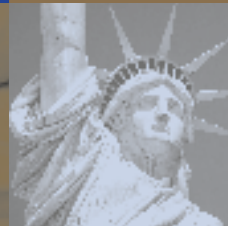
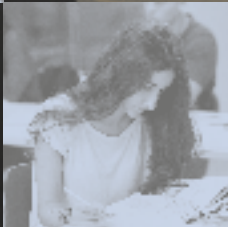




Language
Studies
International

UK
USA
CANADA
AUSTRALIA
NEW ZEALAND
SWITZERLAND
FRANCE

Pathways & Academic Term Abroad 2019/20



12-48 WEEK ACADEMIC & GENERAL
LANGUAGE PROGRAMMES

INTERNATIONAL COLLEGE & UNIVERSITY ENTRANCE
CAREER DEVELOPMENT

www.lsi.edu

Contents

An Introduction to LSI	p2
LSI Language Learning System	p4
Student Progress	p5
Additional Academic Support & Management	p7
Academic Term Abroad & Academic Year Abroad	p8
General Courses	p9
World of Work	p10
Exam Preparation	p12
About LSI's Pathway Programme	p14
Why Choose LSI's Pathways Programme?	p15
Programme Information	p16
Pathways Admission	p17
Partner Colleges & Universities	p18
LSI's Pathway Counsellors	p20
Pathways in Australia	p21
Pathways in the UK	p22
Pathways in Canada	p24
Pathways in USA	p25
Pathways in New Zealand	p26
Pathways in France	p27
Contact Details	p28
LSI Pathway Pre-Study Form	p29

Our Worldwide Accreditations

LSI is committed to maintaining the highest industry standards and actively participates in national industry accreditation schemes. Our schools also maintain memberships with organisations that provide educational research and support development. LSI schools are accredited by and are members of the following organisations:

Accredited by the
 **BRITISH COUNCIL**
for the teaching
of English in the UK

ETS AUTHORIZED
TOEFL® iBT CENTER

Centre for English Language Studies
University of Cambridge

**TEF**
TEST D'ÉVALUATION
DE FRANÇAIS

Languages Canada
Langues Canada

ACCREDITED
**Eaquals**
Excellence in Language Education
LSI Zurich

[flə]
QUALITÉ
EN ÉDUCATION
LINGUISTIQUE
ET CULTURELLE





"The language school exceeds expectations for the quality of education. At the time of inspection, all Standards for Educational Oversight were met and quality is excellent."

CURRENT LSI EDUCATION
ISI INSPECTION REPORT

Learn and live the language

International atmosphere

You will meet students from all over the world and share the experience of learning a foreign language.

Central locations

With centrally located schools in some of the most desirable cities in the world, LSI students have access to a wide variety of social and cultural activities.

We will find the right level for you

On your first day, we will establish your level and needs with a written test and an interview, and place you in the best class for your level.

Interactive classrooms

At LSI, languages are taught in a dynamic and energetic way. We believe active communication in the classroom is the most effective way of learning – by speaking you will achieve fluency.

Language competence certificate

You receive a certificate on your last day, stating the course attended and the level attained, as proof of your language competence. A report is available if required.

Quality inspected homestays

Contact with other students and local people makes sure you practise these skills outside the classroom.

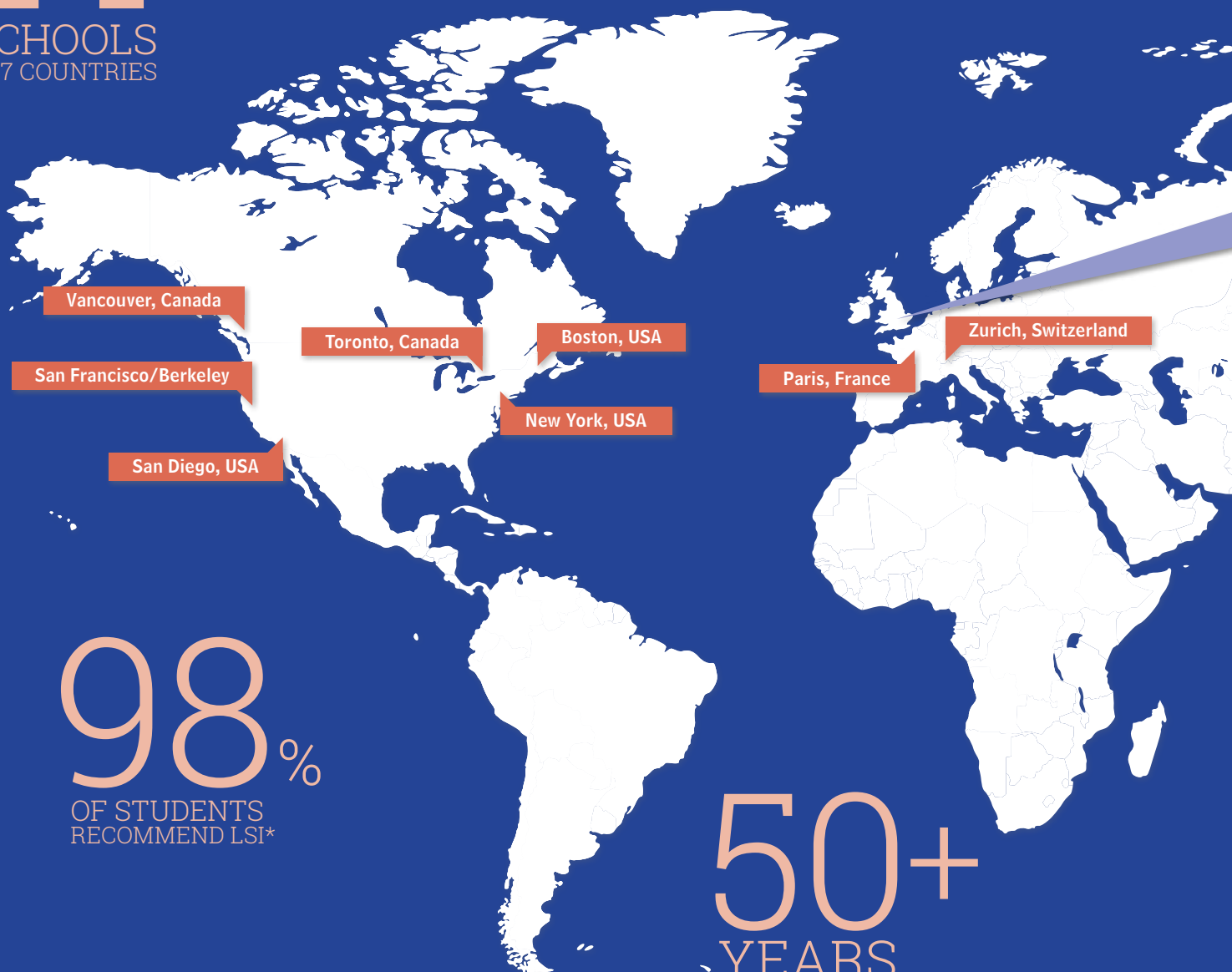
Multicentre courses

Multicentre courses allow you to learn and live the language in more than one LSI location.

Small classes, excellent teachers

Regular individual counselling and effective course design ensure that you make rapid progress in key communication skills. Our teachers are carefully selected, friendly, helpful, and ready to listen.

14
SCHOOLS
IN 7 COUNTRIES



98%
OF STUDENTS
RECOMMEND LSI*

50+
YEARS
EXPERIENCE

Fully equipped language centres

LSI Language Centres are fully equipped with up-to-date materials and resources in comfortable surroundings. Computer rooms are readily available for use during lessons or for self-study. Programmes range from intonation practice to grammar and vocabulary development.

Free WiFi

LSI students receive FREE WiFi internet access in school.

119
DIFFERENT
STUDENT
NATIONALITIES

Excellent mix of nationalities

Our students in 2017

Brazil	15.0%
Italy	10.8%
Japan	9.0%
Turkey	8.1%
Germany	6.8%
China	5.3%
Austria	4.8%
Switzerland	4.1%
France	3.5%
Colombia	3.4%
Spain	2.8%
Saudi Arabia	2.4%
Korea	2.3%
Mexico	1.9%
Russia	1.7%
Taiwan	1.5%
Thailand	1.4%
Poland	1.3%
Israel	1.1%
Argentina	1.0%
Other	12.0%

Welcome

At Language Studies International our experience ensures your success.

We have a record of over 50 years of successful language training, with many thousands of satisfied students worldwide. LSI centres provide the perfect environment for learning.

All our teachers provide a high level of care and attention to ensure you achieve your aims. These skills, combined with thorough course preparation, mean that each lesson will bring you a sense of achievement and progress.

At LSI we believe that the fastest and most effective way to learn a language is to learn it and live it in a country in which it is spoken, and we are committed to providing a total learning experience.

Whether you want to improve your language skills for professional, academic or personal reasons, LSI has the right course for you. The social programmes, quality accommodation and the support we provide during your stay will help you feel at home and ensure that you make maximum use of your time abroad. Our reputation is your guarantee.

We look forward to meeting you.

David Immanuel

LSI – Language Studies International



LSI Language Learning System

We're passionate about language learning. That's why we're constantly reviewing the latest trends and methodology in the field.

Academic staff from every LSI school participate in the research and development of our programmes. We ensure that the latest theories of language learning are considered and evaluated throughout our centres. That's why every one of our schools is a healthy environment for learning. The following points are fundamental to our language learning system:

Language Immersion

At LSI we believe that the best way to learn a language is to study in the country where the language is spoken. We want you to immerse yourself in the culture and truly 'live the language'.

LSI Levels

Upon arrival at any LSI school, we'll give you a comprehensive language level test so we ensure you go straight into the right class for you. LSI levels have been closely matched to the Common European Framework, TOEFL iBT, TOEIC, IELTS and University of Cambridge English examinations. To move up to the next LSI level you need to master our specific 'level objectives', which you can demonstrate by test scores and class participation.

At LSI we understand that some students learn faster than others, so our course is tailored for you as the individual. There are regular opportunities to discuss your progress with your teacher.

Through systematic testing, monitoring your class performance and constant teacher appraisal, the school academic director will track your progress and identify exactly when you have mastered the level objectives and are ready to move up to the next level. This monitoring and testing allows us to grade between and within levels, allowing you to spend more time studying with the students and materials at the level which is right for you.

Latest Materials

We're constantly reviewing the latest materials available for language learning. We provide you with what our academic team have identified as being the very best materials currently available for your level. We are also committed to providing the latest technology, utilising the most cutting edge audio, video and web based resources to bring modern, real world language into the classroom.

Cultural Exchange

As you 'learn and live the language' you will gain a greater understanding of the country in which you are studying. And as our students come from all over the world, our centres are not just places to learn languages, but are also places to meet and share experiences with people from a huge range of backgrounds and cultures.

Quality Teachers

We understand that our students' single most identifiable measure of programme quality is the teacher. That's why at LSI we only work with dedicated, highly motivated teachers, qualified with country specific teaching credentials.

As such we have a systematic programme of teacher development and performance evaluation. All of our students are regularly invited to provide feedback so that we can ensure that your teacher meets your expectations.



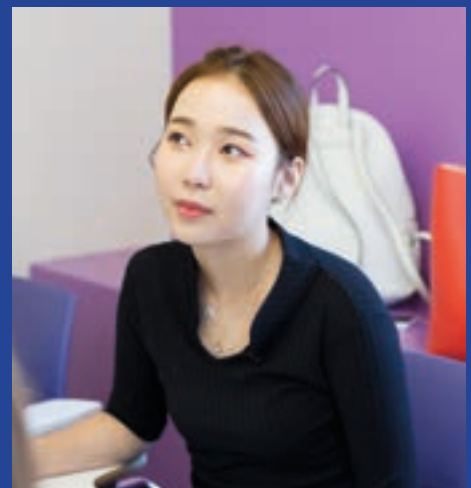
Test your
language level

Download the free LSI iPhone and iPad app available from www.apple.com

E-LSI (E-Learning from LSI) www.lsi.edu/e-lsi

Our custom built on line learning system works alongside our classes to help you maximise your time with us. Through your unique log in, you can access your test scores, prepare for and record your 1-2-1 tutorials with your teacher, and access a wealth of further learning resources to supplement and extend your in class learning.†

Your test results can also be analysed to provide unique learning objectives for you, giving you the chance to study exactly what you need in order to progress.



Student Progress

Throughout the LSI programme, we monitor the academic development and well-being of each and every student carefully. We ensure that every student progresses as quickly as possible and achieves their full potential. At LSI we are very proud of our high student satisfaction rates.

The level reached after studying at LSI depends on a variety of factors:

- Duration of the course – the longer the course, the better the results
- Number of lessons – a more intensive course helps you progress faster
- The language level of the student at entry

Final results will always depend on you, the student. Active participation in afternoon social activities, making new friends from all over the world, immersing yourself in the local culture, as well as speaking the target language as much as possible, will greatly affect your achievements.

“About my TOEFL course, I liked that the classes were small so the teacher had time to explain to every single student. The teachers are prepared.”

BERTHA OLMOS CARRILLO, MEXICO

LSI Level	Skill Level	Study Time	IELTS	ALTE Level	Council of Europe Level	Cambridge ELA Exams	TOEFL iBT	TOEIC*
Advanced	The student can communicate very well using most structures accurately. Can deal with cognitively demanding material quickly and has developed linguistic virtuosity.	Progress varies	6.5+	4–5	C1 & C2	Take CAE, CPE	110–120	L/R 945+ S/W 400+
Upper Intermediate	The student uses a wide range of structures, has linguistic confidence and has greater awareness of the conventions of use.	8-12 weeks	5–6	3	B2	Take FCE; Prepare for CAE	87–109	L/R 785–944 S/W 310–399
Intermediate	The student is an independent user and has better control of grammar and vocabulary. Occasional errors, but a good understanding of the language.	8-12 weeks	4–5	3	B1	Prepare for FCE	57–86	L/R 550–784 S/W 240–309
Pre-Intermediate	The student can manage well in a wider range of situations and express opinions and attitudes in a limited way.	8-12 weeks	3–4	2	A2	Take PET	9–56	L/R 225–549 S/W 160–239
Elementary	The student has the capacity to deal with simple, straightforward information and to negotiate meaning in familiar contexts.	4-6 weeks	2–3	2	A1	Take PET	0–8	L/R 120–224 S/W 80–159
Beginner	The student has the ability to communicate and exchange basic information.	4-6 weeks	1	1		Take KET		

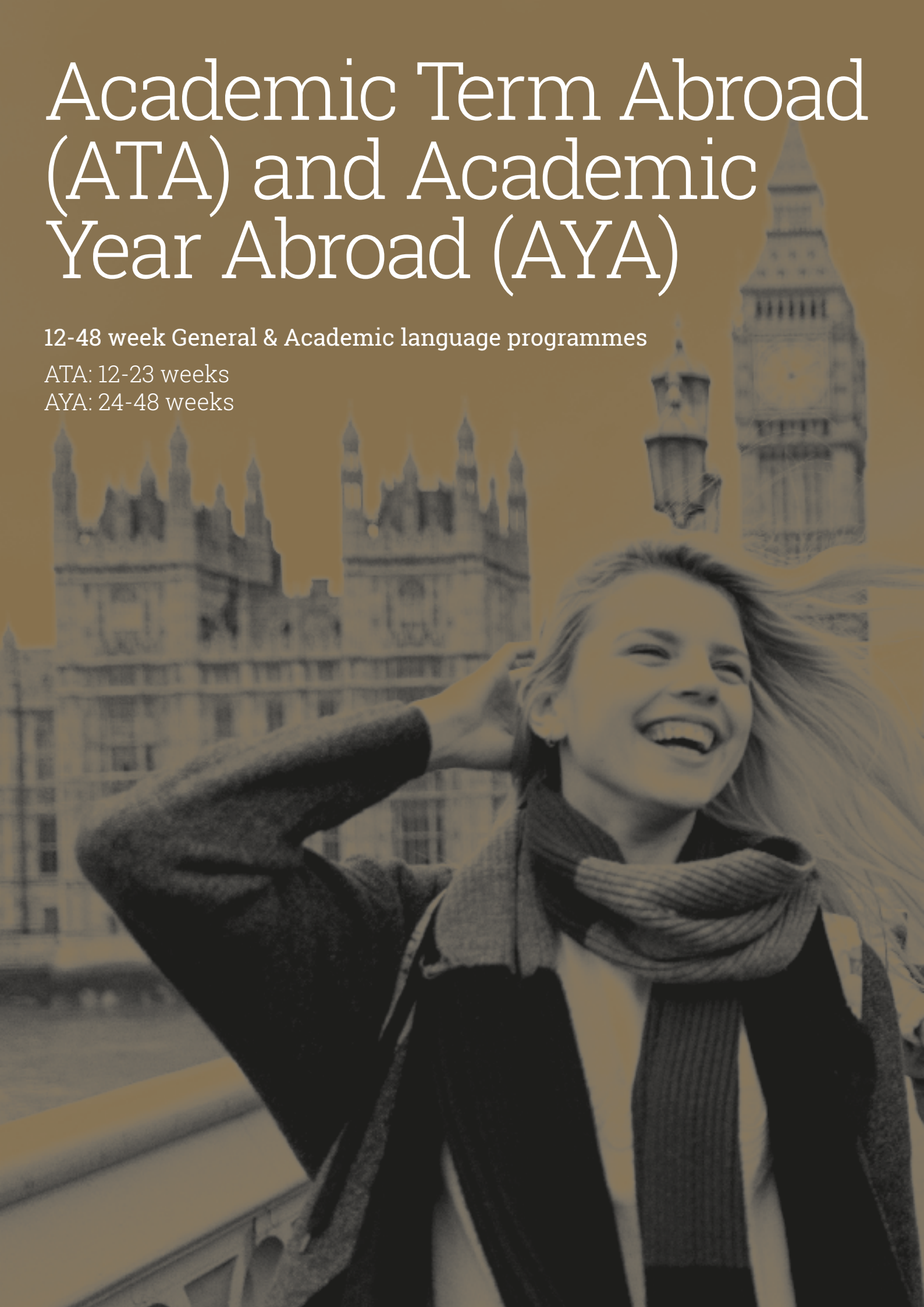
* TOEIC has two scores for Listening/Reading and Speaking/Writing

Academic Term Abroad (ATA) and Academic Year Abroad (AYA)

12-48 week General & Academic language programmes

ATA: 12-23 weeks

AYA: 24-48 weeks



Additional Academic Support and Management

Academic Term Abroad and Pathways Induction

Students receive a special induction and orientation during their first week, ensuring that both they and the Academic Director are clear about their goals and expectations. This induction also ensures that the student knows how best to benefit from all the services that the school offers.

Academic Term Abroad and Pathways Additional Sessions

Each student receives personal supervision and extra support from our academic team in conjunction with the school's Pathways counsellor to ensure that their academic goals are met.

In addition to their regular classes, each student receives 2 x 50 minute sessions per week:

- 1 x 50 minute language review and support
- 1 x 50 minute session on professional development and college/university application support

In these sessions, students choose which topics to focus on. Support is available in a wide range of areas, including but not limited to: employment skills, academic English and college or university application information.

These additional sessions are provided in groups. Sizes may vary between LSI schools.

All LSI students also receive personal academic supervision through regular tutorials and progress testing.

LSI Progress Testing

Regular testing and multi-skill evaluations track exactly how far you have progressed and ensure that our academic team keeps you on track to meet your goals.



"LSI was much more than just a school. I made such good friends and improved my English. It gave me the confidence I needed for my TOEFL test."

EMANUELLE CUNHA, BRAZIL



Academic Term Abroad (ATA) & Academic Year Abroad (AYA)

12-48 week General & Academic language programmes

ATA: 12-23 weeks AYA: 24-48 weeks

This could be the most exciting time of your life. Spend up to a year abroad, achieve a high level of fluency in your chosen language and make new friends from all over the world. ATA and AYA programmes differ from shorter courses at LSI because students receive a greater level of academic support and management, including two additional weekly sessions with a teacher. ATA and AYA programmes are also better value than shorter courses.

Key Features of ATA and AYA

- 20, 24, 25 or 30 lessons per week
- Course length 12+ weeks. Recommended start dates: First Monday of January, April and September*
- 2 additional weekly sessions with an LSI teacher. These sessions include language review and support, professional development and college/university application support.
- Minimum age: 16+
- Beginner to Upper Intermediate levels[#]
- Lesson: 50 minutes (45 minutes in Zurich)
- Max class size: 16 students (12 in Zurich, 15 in the UK)
- Afternoon academic options
- Regular testing, academic counselling and assistance with university placement

An individual study plan is designed for you to suit your level, individual aims and the duration of your course.

We continue to check your progress with regular meetings to make sure you achieve your aims. Your study plan options can include: general language classes (see page 9), examination courses, fluency practice, study skills classes, Academic English and English for Business.

The 30 lessons option for ATA or AYA courses are offered at all LSI language centres but please note that other lesson options may vary between schools. We are happy to advise you as to which option is most suitable for your needs.

Sample AYA Study Plans

SCHOOL: LSI Vancouver LESSONS P/WK: 30 + 2 workshop sessions DURATION: 36 weeks		
Week 1-12	Week 13-24	Week 25-36
General English	FCE Exam Preparation	General English
English for Business	FCE Exam Preparation	TOEFL Preparation & Study Skills
Academic Counselling	Academic Counselling	Academic Counselling

SCHOOL: LSI London Central LESSONS P/WK: 30 + 2 workshop sessions DURATION: 36 weeks		
Week 1-12	Week 13-24	Week 25-36
General English	IELTS Preparation & Study Skills	CAE Exam Preparation
Academic Counselling	Academic Counselling	Academic Counselling

* Students can also start on any Monday # Beginner level not available in London Hampstead, Cambridge and Brighton



ATA & AYA Student Progress

As ATA and AYA courses range from 12 to 48 weeks in length, we expect our students to achieve excellent results.

The level reached after an ATA or AYA course depends on a variety of factors:

- Duration of the course – the longer the course, the better the results
- Number of lessons – often a more intensive course yields better results
- The language level of the students – the higher the language level, the more time it may take to advance to the next level

Final results will always depend on you, the student. Active participation in afternoon social activities, making new friends from all over the world, immersing yourself in the local culture, as well as speaking the target language as much as possible, will have enormous impact on your achievements.

Accommodation

All options are available. However, we recommend our carefully chosen homestays to ATA and AYA students, at least for the first month of your course – the friendly welcome you receive helps you settle quickly into life in a new country.



General Courses

www.lsi.edu/general-courses

Our range of General Courses offers something for everyone – whether you're looking for a short refresher course, or a longer, more intensive course, LSI has the programme to suit your needs.

General 20

During the lessons you rapidly improve your communication skills in a variety of everyday situations. Classes cover grammar, vocabulary, pronunciation, speaking, listening, reading and writing. You use a text book in conjunction with a wide variety of materials and exercises including role-plays, authentic materials, newspapers, magazines, YouTube and other internet content.



Intensive Courses

LSI offers 24, 25 or 30 lesson options per week on our Intensive courses. All our intensive courses consist of the General 20 course (4 lessons per day) and a range of electives to suit all levels, needs and interests (2 lessons per day).

Elective lessons are run twice a week on the Intensive 24 and 25, and every day on the Intensive 30 course. Some electives run on specific dates. Contact schools for details.

Intensive 24, 25 and 30 Electives

English /French/German for Communication
English for Business
TEF
DELF
CCIP
Goethe-Zertifikat
TOEFL
TOEIC
IELTS
Cambridge Exam Courses (FCE, CAE, CPE, BEC)

Plus Courses

The combination of group and One-to-One learning is ideal when you want extra help with general skills or more specialised topics. Plus courses are 5 or 10 individual lessons. Our teachers work with you to develop your study plan. This course can supplement a General 20 or Intensive courses.

One-to-One

The fastest way to improve your language skills is through individual lessons. Individual lessons are ideal if you prefer a very personal focus on your own aims.

"I've been at LSI for 12 weeks. It was a pleasure to study here. LSI made everything feel comfortable for me. I hope to be back soon!"

FATIMATA N'DONGO, FRANCE

	General 20	Intensive 24	Intensive 25	Intensive 30	Plus 5	Plus 10	One-to-One
Locations	All schools	UK, Auckland, Brisbane	US and Canada	All schools	All schools	All schools	All schools
Lessons per week	20	24	25	30	5	10	Varies
Hours per week	16.67* (15 in Zurich)	20	20.83	25 (22.5 in Zurich)	3.75 (4.16 in US & Canada)	7.5 (8.33 in US & Canada)	Varies
Minutes per lesson	50 (45 in Zurich)	50	50	50 (45 in Zurich)	45 (50 in US & Canada)	45 (50 in US & Canada)	45 (50 in US & Canada)
Minimum level ^	All	All	All	All [#]	All	All	All
Maximum class size	16†	16†	16	16†	1	1	1
Minimum age	16	16	16	16	16	16	Varies

* In the US equates to 20 clock hrs/wk. A clock hour is defined as a 60-minute span of time, with no less than 50 minutes of actual class instruction

† 12 in Zurich, 15 in the UK

[#] In Zurich, from elementary level and upwards

[^] Beginner level not available in London Hampstead, Cambridge and Brighton

World of Work

www.lsi.edu/world-of-work

English for Business

English is the international language of business. We have therefore developed a special, flexible, 12 module course designed to rapidly improve your business communication skills.

Every 12 weeks, we recycle the modules with a fresh syllabus. This means students who wish to study longer and consolidate and expand their knowledge of a particular area, can do so without repeating any material.

- Intermediate to Advanced levels
- 10 lessons per week
- Option on our LSI Intensive 30 course
- Module dates: contact school
- Age 16+
- Students can join every Monday

In each module, through a combination of written exercises, presentations, dialogues and role-plays in realistic business situations, you will practice and improve your skills in: business vocabulary and “buzz words”, email, memo and letter writing, negotiating, interviewing and telephoning in English.

Module 1	International Trade
Module 2	Developing Leadership Skills & Teambuilding
Module 3	Effective Communication in Presentations
Module 4	Decision Making, Motivation & Delegation, Effective Communication in Meetings
Module 5	Marketing & Advertising
Module 6	E-Commerce, Viral Marketing & Social Media
Module 7	Banking, Stockmarkets, Mergers & Acquisitions
Module 8	Relationship Building & Networking
Module 9	Recruitment Interviewing
Module 10	Business Law, Ethics & Environmental Issues
Module 11	Effective Communication in Selling & Negotiations
Module 12	Management Styles in International Companies

Specific modules can be provided on request



“I’m very happy about my decision to choose LSI as my English school. My teachers were really, really excellent.”

ISABEL TOBIA, MARKETING, VENEZUELA



www.lsi.edu/work-study-programmes

Study & Work Experience

LSI Study & Work Experience Programmes are an excellent opportunity to practise and develop your language skills in a business environment while gaining valuable work experience.

LSI offers both unpaid work experience placements and paid positions. These programmes are ideal for university-aged students or young professionals with limited experience.

UK

Work Experience (Unpaid)

- Available to EU nationals and for Working Holiday Visa holders
- LSI Intensive 30 course prior to work experience
- Work experience placement for 1–6 months
- You select 3 industries or professional areas in which you would like to work; we then search for a suitable placement for you
- Applications must be received at least 12 weeks in advance
- Minimum age: 18+

Work Experience (Paid)

- Available to EU nationals and for Working Holiday Visa holders
- LSI Intensive 30 or General 20 course prior to work placement
- Full or part-time work placement in an unskilled job for 3–6 months earning at least the minimum wage hourly rate
- Placements are available in hotels but may be based anywhere in the UK
- Applications must be received at least 12 weeks in advance
- Minimum age: 18+

Australia

Unpaid Internships

- Available in a range of areas including Marketing, Events, HR, Business Administration, Hospitality and Aged Care
- Placement length: 6–26 weeks (depending on the programme)
- Minimum level: Upper Intermediate (equivalent to IELTS 6.0)
- Prerequisite: 12 weeks Intensive 30
- Applications must be made 4 months in advance
- Candidate must be enrolled on a tertiary course, or a recent graduate (within 18 months of course completion)
- Internship must be directly related to educational background
- Ages: 18–30

Working Holiday

- Working holiday visas are available to students from a number of countries
- Live and work in Australia for up to 1 year
- Assistance in preparing CVs, cover letters and interview techniques for job applications

Canada

Working Holiday

- Work anywhere in Canada on an open work permit
- Live and work in Canada for up to 12 or 24 months, depending on your country of citizenship
- Work in any job sector in voluntary or paid employment
- Study for up to 6 months

New Zealand

Unpaid Internships

- LSI Intensive 30 course for 4–12 weeks prior to work experience
- Placements are for 3–6 months and are located mainly in Auckland but some may be based in other cities
- Ages: 18–30
- Minimum English level: Upper Intermediate
- Internships offered in various areas such as Administration, Advertising, Marketing & Sales, Media & PR, Web development and more
- Available to Working Holiday Visa holders
- Also available to Trainee Visa holders where the internship forms part of the holder's University study requirements

Working Holiday

- Working holiday visas are available to students from a number of countries
- Students can study up to 6 months on this visa depending on their country of origin
- Live and work in New Zealand for 1 year
- Assistance in preparing CVs, cover letters and interview techniques for job applications



Exam Preparation

LSI students have a very high success rate in examinations. We will be delighted to help you decide which of the many examination courses we offer is right for you.

Overview of Examinations

KEY TO LEVEL: ● Pre-Intermediate (A2) ● Intermediate (B1) ● Upper Intermediate (B2) ● Advanced (C1/C2)

Examination	Level	Examination Dates	Description
ENGLISH			
CAMBRIDGE ENGLISH LANGUAGE ASSESSMENT	PET	Preliminary English Test	●●●●● March, June, November, December
	FCE	First Certificate in English	●●●●● Frequently throughout the year
	CAE	Certificate of Advanced English	●●●●● Frequently throughout the year
	CPE	Certificate of Proficiency in English	●●●●● March, June, December
	BEC	Business English Certificate	●●●●● March, May, June, November, December
	TKT	Teaching Knowledge Test	●●●●● Contact schools for dates
IELTS	International English Language Testing System	●●●●● Frequently throughout the year	Requirement for enrolment at universities and colleges in the UK, Ireland, Australia and New Zealand
TOEFL	Test of English as a Foreign Language	●●●●● Frequently throughout the year	Requirement for admission to universities and colleges in the USA and Canada
TOEIC	Test of English for International Communication	●●●●● Frequently throughout the year	Business English exam for international students and professionals
GMAT	Graduate Management Admission Test	●●●●● Frequently throughout the year	Recognised by graduate programmes at Universities around the world
SAT	Scholastic Assessment Test	●●●●● Frequently throughout the year	Recognised by Universities around the world
FRENCH			
DELFI	Diplôme d'Etudes en Langue Française 1er Degré	●●●●● May, October	Recognised by the French Ministry of Education
TEF	Test d'Evaluation de Français	●●●●● Frequently throughout the year	Recognised by French speaking universities and companies
CCIP	Diplôme de Français Professionnel (DFP)	●●●●● June, December	Recognised by the French Ministry of Education
GERMAN			
ZD	Goethe-Zertifikat B1	●●●●● April, June–July, August–September, November	Universally accepted as proof of intermediate proficiency in German
GZ	Goethe-Zertifikat B2	●●●●● April, June–July, August–September, November	Set as an official entrance requirement by many universities and colleges

Well structured programmes and advice on exam strategies ensure that you are fully prepared when you take your exam. Please remember to check with us that the examination of your choice is available during your planned stay at LSI.

Cambridge English Language Assessment*

- FCE, CAE, CPE, BEC and TKT preparation courses available
- 20/24/30 lessons per week
- Lesson: 50 minutes
- 4–12 week programmes
- Minimum age 16+
- Pre-Intermediate level and above
- Locations – see individual LSI language centre pages.

The course focuses on:

- Accurate use of everyday grammar and language structures
- General reading, writing and listening skills
- Extensive development and practice of vocabulary

- Improving the comprehension and communicative ability

Plus, the exam skills needed to obtain a high Cambridge English Language Assessment grade. We offer the Cambridge TKT exam at some centres where we run the English for Teaching course.

IELTS, TOEFL iBT & TOEIC Courses*

- 24/25/30 lessons per week
- Lesson: 50 minutes
- 1–24 week programmes
- Minimum age 16+
- Intermediate level and above
- Locations - see individual LSI language centre pages.

Up to 20 lessons per week which concentrate on grammar input and language skills and 10 lessons per week which focus on study skills and exam practice. In this course you will study:

- Accuracy with grammatical structures
- Communicative skills and ability
- Functional structures
- Vocabulary extension
- Active study skills
- Exam skills needed to obtain a high IELTS, TOEFL iBT or TOEIC score.

Mini Group Exam Preparation

- 20, 30 or 40 lessons per week
- 4-12 week programmes
- Participants: Maximum 5
- IELTS/TOEFL/PET/KET/FCE/CAE/CPE levels
- 1 lesson: 45 minutes (50 minutes USA & Canada)

100% exam focused preparation working intensively on the grammar, vocabulary, reading, writing, listening and speaking skills necessary for the exam of your choice. This complete focus on your exam, taught in a small group, provides a fast route to success in the chosen exam.

Pathway Programme



About LSI's Pathway Programme

www.lsi.edu/pathways

Start your journey to an undergraduate or postgraduate qualification from a university or college in the UK, Canada, USA, New Zealand or Australia. LSI's Pathway Programme supports you from the moment you register. We'll help you find the right programme for you and provide you with the support you need to meet the entry requirements. We'll help you through the application and enrolment process and ensure that you meet the academic standards of English required.



Simple and guided transfer from LSI's Pathway programme into one of our trusted partner institutions

Conditional letters of acceptance from chosen institutions

Academic support to help you reach the academic English standards required

Receive an introduction to your chosen institution from the local LSI school, including guest lectures and campus tours

Programme varies in different countries. See country pages for details.



Is LSI's Pathway Programme appropriate for you?

LSI's University Pathway Programme is designed for recent high school graduates or university or college graduates interested in enrolling in undergraduate or postgraduate programmes in the UK, USA, Canada, New Zealand or Australia. The LSI Pathway programme is appropriate for all students who want to reach the academic standards of English required to participate and thrive in a university or college based in an English speaking country.



LSI Pathways In France

LSI offers the Pathways Programme in our school in Paris. The programme focuses on helping students reach the academic French level required for entrance to French-speaking universities and colleges. LSI will guide you through the application and enrolment process ensuring you select the right course for you.

Why Choose LSI's Pathways Programme?

LSI has been preparing international students for university and college admission in the UK, Canada, USA, New Zealand, Australia and France since 1965.



- LSI has partner agreements with reputable institutions around the world.
- Many of LSI's partner institutions accept LSI's own levels as proof of language level in place of external tests; TOEFL, TOEIC, IELTS etc.
- LSI provides complimentary counselling services to all Pathway students, helping to find the right programmes and supporting students through the application process.
- In London, LSI Independent Sixth Form College's experienced academic staff has helped students reach the most prestigious institutions in the UK.
- Every LSI Pathway graduate is prepared academically and culturally to attend and thrive in their chosen university or college programme.



Academic Excellence

- LSI is committed to academic excellence. Our Academic Directors and teaching staff are continuously working to provide the very latest in teaching methodology, materials and resources.
- All Pathway students get individual monitoring to assess and support progress.
- LSI's e-learning system helps our students practice their English and organise their studies.
- LSI organises partner institution tours and arranges for LSI students to attend guest lectures at LSI's partner institutions*.

* Additional fees may apply



Programme Information

www.lsi.edu/pathways/programme_information

LSI's Pathways programme prepares students for the academic challenges facing them on English speaking programmes at top colleges & universities in the UK, USA, Canada, Australia and New Zealand.

Course length

12-48 weeks

Students will learn general language skills and academic skills necessary to thrive on English speaking undergraduate and post graduate programmes. The LSI Pathways programme also prepares students for the challenges faced in an English speaking workplace.

By the end of the course, students are expected to reach LSI's Advanced level, equivalent to TOEFL iBT 110 or IELTS 6.5+.

Start dates

LSI's Pathways programme starts on the first Monday of January, April and September. Students may start in the General English programme on any Monday and later transfer into the Pathways programme.

Academic English

LSI's Pathways programme includes the Academic English course. This course is built by the counsellor, student and academic manager to give the student the best chance of reaching their chosen institution's academic targets.

The course is a combination of general English, Cambridge Assessment Exam Preparation and Academic Exam (IELTS/TOEFL) preparation, depending on the needs of the students and their chosen institution.

In addition, two further Pathways classes per week allow time to discuss progress, work on applications and tackle any language issues.

This combination, tailored for each student, meets individual hopes and needs. This is all supported by specialised, targeted, online resources through our online learning system, E-LSI.

What skills do we teach?

- University research and presentation skills
- Effective communication in academic situations
- Exam skills and techniques
- Note taking and organising
- Essay writing skills, including critical thinking and developing and presenting arguments
- Optional classes include: - Cambridge English Exam courses, FCE/CAE/CPE/BEC - IELTS, TOEFL iBT, TOEIC - Business English

"Lessons were well organized; the activities and topics were interesting. I liked the simulated TOEFL tests in the computer lab."

FRANCISCO FUENTES MELLA, SPAIN



Programme Information for Pathways in France

The Pathways Programme in Paris will prepare students for the DELF and DALF examinations, both of which are accepted as proof of French language level by French-speaking universities and colleges. In addition the programme helps students to develop the academic skills needed to thrive in a university setting.

Course length and dates are the same as the English-speaking Pathways programmes.



Pathways Admission

www.lsi.edu/pathways/admission

Candidates interested in applying for the Pathways programme will need to fulfill certain requirements. LSI has a step by step guide to the application process.

Application Process



- 1 Complete our free online test of English: www.lsi.edu/en/english-level-test*
- 2 Complete our pre-study evaluation form
- 3 Contact one of our local representatives or LSI Pathways counsellor to discuss your goals. After submitting a pre-study evaluation form, an LSI Pathways counsellor will be in touch with you to discuss your options and the application process.
- 4 Complete an LSI enrolment form and register on a Pathways programme
- 5 Email a copy of your high school &/or university transcripts to your LSI Pathways counsellor

Admission Requirements

Students need to complete LSI's preliminary language level tests, submit a pre-study evaluation form and submit copies of their high school &/or university transcripts.

Language level requirements

LSI's Pathways programme is designed for students who need to meet language requirements to enter an English or French-speaking university, college or further education programme, or simply wish to expand their ability to use the language in an academic setting. The Pathways programme is appropriate for students who have at minimum language level sufficient to study in LSI's Intermediate level. Students who have not yet reached the minimum language level to start the Pathways programme may join the general language programme until they reach the necessary level. This is an excellent way to reach your goals as quickly as possible from a lower starting point.

Programme entry requirements for preferred university and college programmes vary, but students may register at LSI with any level of English or French.



Partner Colleges and Universities

www.lsi.edu/pathways/partners

Enrol on an LSI Pathway course and seamlessly transition into one of our partner institution's programmes upon reaching the required level of English.

Direct Transfers and Conditional Offers

Many of LSI's partner institutions accept LSI's own levels in place of an external test of English, such as TOEFLiBT, TOEIC, IELTS etc.

LSI's Pathways counsellors can apply on behalf of the student, making the application process simple.

Direct Transfers and conditional offers services may vary in different countries.

Partner Institution Programmes

USA

Institution	Location	English Requirement
Adelphi University	Garden City, NY	TOEFL/IELTS waived [†]
American International College	Springfield, MA	TOEFL/IELTS waived upon completion of level 5
American University	Washington, D.C.	TOEFL/IELTS waived [†]
Arkansas State University	Jonesboro, AR	Completion of level 3 for direct undergraduate admission; completion of level 4 for direct graduate admission
Auburn University	Auburn, AL	TOEFL/IELTS waived [†]
Benjamin Franklin Institute of Technology	Boston, MA	TOEFL/IELTS waived upon completion of level 5
California International Business University (CIBU)	San Diego, CA	TOEFL/IELTS waived upon completion of level 5
Cambridge College	Springfield, MA	TOEFL/IELTS waived upon completion of level 5
College of Idaho	Caldwell, ID	TOEFL/IELTS waived upon completion of level 5
College of the Desert	Palm Desert, CA	TOEFL/IELTS waived upon completion of level 5
Community Colleges of Spokane	Spokane, WA	TOEFL/IELTS waived upon completion of level 3
Fisher College	Boston, MA	TOEFL/IELTS waived upon completion of level 4
Florida International University	Miami, FL	TOEFL/IELTS waived [†]
Full Sail University	Winter Park, FL	TOEFL/IELTS waived upon completion of level 5
Golden Gate University	San Francisco, CA	TOEFL/IELTS not waived
Grossmont Community College	San Diego, CA	TOEFL/IELTS waived upon completion of level 4
Humboldt State University	Arcata, CA	TOEFL/IELTS waived upon completion of level 5
Los Angeles Film School	Los Angeles, CA	TOEFL/IELTS waived upon completion of level 5
Louisiana State University	Baton Rouge, LA	TOEFL/IELTS waived [†]
Maryville University	St. Louis, MO	TOEFL/IELTS waived upon completion of level 5
Metropolitan College of New York	New York, NY	TOEFL/IELTS waived upon completion of level 5
National University	California & Nevada	No TOEFL/IELTS, completion of level 5 and then student takes National's ELP 820 for one month
New York Film Academy	New York, NY	Admission to diploma programmes requires completion of LSI's Upper Intermediate level (TOEFL/IELTS waived)
Notre Dame de Namur University	Belmont, CA	TOEFL/IELTS waived for undergraduate upon completion of level 4, for graduate upon completion of level 5
Platt College	San Diego, CA	TOEFL/IELTS waived upon completion of level 5
Prince William Sound Community College	Valdez, AK	TOEFL/IELTS waived upon completion of level 3
Rocky Mountain College of Art & Design	Lakewood (Denver), CO	TOEFL/IELTS waived upon completion of level 4
Saint Michael's College	Colchester, VT	TOEFL/IELTS waived upon completion of level 5
San Francisco State University	San Francisco, CA	TOEFL/IELTS score of 61 or IELTS score of 6.0 required
Schiller International University	Largo, FL	TOEFL/IELTS waived upon completion of level 5
Seattle Central Community College	Seattle, WA	TOEFL/IELTS waived upon completion of level 5, students must take English and math placement exams and may be placed in the College Bridge Programme
Southwestern Oregon Community College	Coos Bay, OR	IELTS or TOEFL iBT 45 required



USA continued...

Institution	Location	English Requirement
UC Berkeley Extension	Berkeley, CA	Will issue conditional acceptance but must submit test score
University of Central Florida	Orlando, FL	TOEFL/IELTS waived [†]
University of Illinois at Chicago	Chicago, IL	TOEFL/IELTS waived [†]
University of Kansas	Lawrence, KS	TOEFL/IELTS waived [†]
University of the Pacific	Stockton, CA	TOEFL/IELTS waived [†]
University of South Carolina	Columbia, SC	TOEFL/IELTS waived [†]
William Jessop	Sacramento, CA	Admission to BA programmes on completion of level 4, and to MA programmes on completion of level 5

[†]To meet the English language requirement the student can take the Pearson/Versant test at their LSI school

“Good class organization, I really learned new things in my class and I like the English-only zone – that’s rarely found in other schools.”

HATTAN KHEDIR DAMANHOURI,
SAUDI ARABIA

Canada

Institution	Location	English Requirement
Acsenda School of Management	Vancouver, BC	Admission to the Bachelor of Business Administration degree programme requires completion of LSI’s Advanced level (CEFR level C1)
Evergreen College	Ontario	Admission to certificate and diploma programmes requires completion of LSI’s Upper Intermediate level (TOEFL/IELTS waived)
Lambton College	Ontario	Admission to certificate and diploma programmes requires completion of LSI’s Upper Intermediate level (TOEFL/IELTS waived)
Niagara College	Welland, ON	Admission to certificate, diploma, and advanced diploma programmes requires completion of LSI’s Upper Intermediate level (TOEFL/IELTS waived). Admission to degree programmes requires completion of LSI’s Advanced level (TOEFL/IELTS waived).
Toronto Film School	Toronto, ON	The completion of LSI Upper Intermediate (CEFR Level B2)
Wilfrid Laurier University	Waterloo, ON	Admission to degree programmes requires completion of LSI’s Advanced level and Laurier’s LEAF programme. (TOEFL/IELTS waived)
Yorkville University	Toronto, ON	Diploma and bachelor programmes. Completion of LSI Upper Intermediate (CEFR Level B2) required for diploma programmes and LSI Advanced (CEFR Level C1) for degree programmes.

New Zealand

Institution	Location	English Requirement
Avonmore Institute	Takapuna, Auckland	Admission to range of certificate and diploma courses with IELTS 5.5 (no band lower than 5) or 42 points in the PTE
International Travel College	Auckland	Admission to range of certificate and diploma courses with a minimum IELTS score of between 5.0 to 5.5 depending on course
Whitecliffe School of Design	Parnell, Auckland	Admission to range of certificate and degree courses with a minimum IELTS score of between 5.5 to 7.0 depending on course
UNITEC	Mt. Albert, Auckland	Admission to range of degree and diploma courses. Course-specific and country-specific entry requirements
Auckland Institute of Studies	Mt. Albert, Auckland	Admission to range of degree and diploma courses with a minimum IELTS score of 6.0
Ardmore Flying School	Papakura, Auckland	Admission to diploma and licensing courses with a minimum IELTS score of 6.0
Animation College	Auckland	Admission to range of degree and diploma courses with IELTS 6 (no band lower than 5.5)
Taylor’s College	Auckland	Admission to range of certificate courses with a minimum IELTS score of between 4.0 to 5.5 depending on course



LSI Pathway Counsellors

www.lsi.edu/pathways/counsellors

Every LSI school has a trained counsellor on site to provide advice and support throughout the university application process.

Meet LSI's Pathway Counsellors



Mark Lane
London Central



Lucy Rumack
New York



Rob Petrie
Boston



Dr. Michael McGrath
London Hampstead



Lauren Macdonald
San Diego



Greg Wickline
San Francisco/Berkeley



Anthony Drury
Brighton



Lisa Kilmartin
Toronto



Kevin Keeler
Vancouver



Agnes Gulczynska
Cambridge



Brad Roberts
Auckland



Jasmine Clarke
Brisbane



Emmanuel Viret
Paris

LSI Counsellors help our students in the following ways:

- Find the right programmes for each student by understanding their specific goals and skills
- Introduce students to a wide variety of programmes of which they may not have been aware
- Guide students through the application process
- Provide conditional letters of acceptance (LOA) from LSI partner universities & colleges*
- Organise guest lectures and tours of partner institution campuses
- Provide UCAS support in the UK
- Along with the LSI academic staff, ensure students are prepared to thrive in the college or university of their choice

*Services may vary in different countries



Pathways in Australia www.lsi.edu/pathways/australia

Why Study in Australia?

- World-class institutions
- Convenient locations in major cities
- Safe and friendly student environment
- Work rights and work visas available

Pathways

LSI's Pathway programme

(12-48 weeks)

Develop the language and academic skills required when applying for entry to Australian colleges and universities

College, TAFE or University Programme (6 months - 3 years)

Working in Australia

Permission to work - Temporary Graduate visa, subclass 485

Depending on qualifications, students may be able to work in Australia after completion of their studies for up to four years from the date the visa is granted*.

*Information subject to change. For up-to-date information, please visit the Department of Immigration and Border Protection website: www.homeaffairs.gov.au/



LSI Campus in Australia

Brisbane

LSI Brisbane is located in a heritage building in the heart of the city next to the Brisbane River, close to shops, restaurants and public transport links.

Our Accreditations & Memberships



Registered Provider: Language Studies
International Australia Pty Ltd.
ABN: 46 050 405 877. CRICOS
Provider Number: 01678A

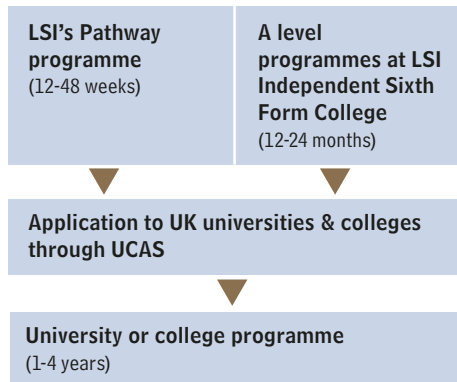
Pathways in the UK

www.lsi.edu/pathways/uk

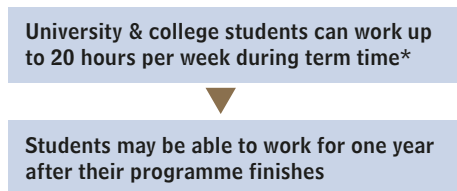
Why Study in the UK?

- World-class institutions steeped in tradition
- The historic centre of the English speaking world
- Rich & diverse cultural heritage

Pathways



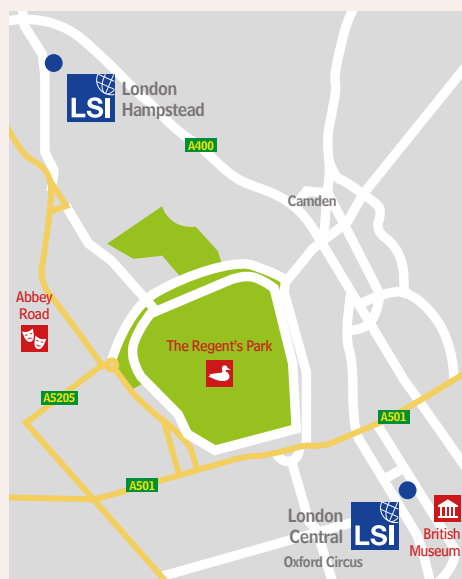
Working in the UK



*Information subject to change. For up-to-date information, please visit www.gov.uk



LSI Campuses in the UK



London Central

LSI London Central is located in the heart of the city, close to universities and the fashionable entertainment district of Soho, in an area full of cafes, bars and pubs catering to the lively student population.

London Hampstead

The leafy and picturesque neighbourhood of Hampstead is located just 3 miles from the very centre of London. Hampstead village is brimming with charming restaurants, cafes and boutiques. LSI London Hampstead's excellent location means students benefit from both nearby accommodation options and easy access to London's famous sites.



Brighton

Our Brighton school consists of two campuses, just a ten minute walk from each other. Shops, coffee houses, pubs, restaurants and a leisure centre are all nearby.

Our Accreditations & Memberships

Accredited by the
BRITISH COUNCIL
for the teaching
of English in the UK

ENGLISHUK
member

CAMBRIDGE ENGLISH
Language Assessment
Authorized Centre

PFE
Professional Foreign
Examinations



Cambridge

The school is ideally located in a quiet residential area, convenient for both the train station and the city centre.



LSI Independent Sixth Form College

LSI Independent Sixth Form College provides high quality, fully accredited, A level and university preparation programmes. We prepare students from all over the world to gain entry into some of the UK's most prestigious universities.

A level Courses in the UK

A levels are the standard qualifications required for admission to most UK universities. LSI offers one-year, 18 months and two-year A level programmes depending on the student's prior knowledge and qualifications. Generally, A levels are studied over two years with students selecting three subjects.

LSI Independent Sixth Form College mainly offers the following subjects at A level but other subjects can be catered for on request:

- | | |
|---------------------------------|-----------------------|
| • Art | • German |
| • Biology | • History |
| • Business | • Latin |
| • Chemistry | • Mathematics |
| • Computer Science | • Further Mathematics |
| • Economics | • Physics |
| • English Language & Literature | • Politics |
| • English Literature | • Psychology |
| • French | • Sociology |
| • Geography | • Spanish |

“A level students make excellent progress in lessons, demonstrating high levels of subject knowledge and academic skills.”

CURRENT LSI EDUCATION ISI INSPECTION REPORT

Pathways in Canada

www.lsi.edu/pathways/canada

Why Study in Canada?

- World-class institutions
- Inexpensive tuition fees and living expenses
- A growing economy with employment opportunities
- Post-graduate work permits (1-3 years)

Pathways

LSI's Pathway programme
(12-48 weeks)

College or university programmes
(1-4 years)

Working in Canada

College and university students are able to work during and after their programmes

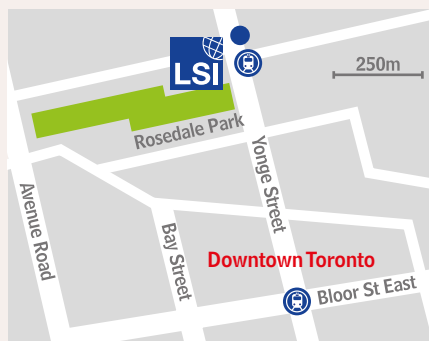
Post-Graduate work permits are available for 1-3 years depending on the length of study

Students are eligible to apply for Permanent Residence after one year of postgraduate work experience. If successful, permanent residence can usually be achieved with 3-12 months.*

* Information subject to change and may vary among provinces. For up-to-date information, please visit the Citizenship & Immigration Canada (CIC) website: www.cic.gc.ca/english/study/index.asp



LSI Campuses in Canada



Toronto

Located in Rosedale, one of the most beautiful residential neighbourhoods in Canada's largest city, LSI Toronto is well placed for exploring all that the area has to offer.



Vancouver

The school is conveniently located for bus, Seabus and Skytrain transportation links and the city's main attractions.



Our Accreditations & Memberships

Cambridge English Language Assessment
Exam Preparation Centres

Languages Canada
Langues Canada



Designated Learning Institutions
Toronto No: 019332668052
Vancouver No: 019283928542

Pathways in the USA

www.lsi.edu/pathways/usa

Why Study in the USA?

LSI's Pathway programme offers guaranteed transfers to partner institutions across the USA.

- World-class institutions
- The cultural and economic centre of the English speaking world
- A growing economy with employment opportunities
- Post-graduate work permits

Pathways

LSI's Pathway programme
(12-48 weeks)

Seamless transition to LSI partner institution

University or college programme
(1-4 years)

Working in the USA

University & college students can work up to 20 hours per week*

OPT – Optional Practical Training

Students may be able to work for one year after their university programme finishes

*Information subject to change. For up-to-date information, please visit the Immigration and Customs Enforcement (ICE) website: www.ice.gov/sevis/students

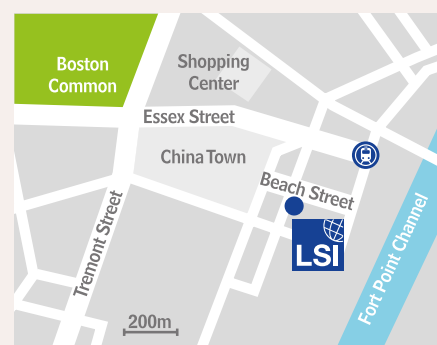


LSI Campuses in the USA



New York

Located in a newly renovated Renaissance Revival building designed by the architects who created Grand Central Terminal, LSI New York is in the heart of the historic Financial District, only blocks from Wall Street, New York Stock Exchange, the National September 11 Memorial and One World Trade Center.



Boston

LSI Boston is situated in a commercial brownstone building on the borders of Chinatown and the Theatre and Financial Districts.



San Diego

LSI San Diego is located in a modern building in the heart of the city, close to all amenities and within easy walking distance of such attractions as San Diego Zoo, the Gaslamp District, Balboa Park and the San Diego Bay.



San Francisco/Berkeley

A relaxed and charming town, Berkeley offers visitors easy access to all the attractions of San Francisco. The school occupies a two-storey building in downtown Berkeley just moments from the station and the UC Berkeley university campus.



Our Accreditations & Memberships

Cambridge English Language Assessment
Exam Preparation Centre

CAMBRIDGE ENGLISH
Language Assessment
Authorized Centre

ENGLISH
US

ACCREDITED

ASSOCIATION OF
AMERICAN
COLLEGES

EDUCATION
FOR
CAREER
DEVELOPMENT

Pathways in New Zealand

www.lsi.edu/pathways/new_zealand



Why Study in New Zealand?

- World-class institutions
- Convenient locations in major cities on both islands
- Safe and friendly student environment
- Work rights and work visas available

Pathways

LSI's Pathways programme (12-48 weeks)

Gain the language skills you need to meet entry requirements of colleges and universities and succeed in your studies.

All LSI Auckland students receive National Student Numbers to track academic progress throughout their stay in NZ.

College or university programmes (6 months – 4 years)

Working in New Zealand

LSI, college or university students can work up to 20 hours per week if enrolled in courses of 14 weeks or longer*

Post-Graduate work visas are available:

- 12 months (Open)
- + 2 – 3 years (Employer Assisted)*

*Information subject to change. For up-to-date information, please visit: www.newzealandnow.govt.nz/



LSI Campus in New Zealand

Auckland

LSI Auckland is located right in the centre of the city close to cafes and restaurants, and features bright and airy classrooms overlooking the palm trees in Myers Park. There are excellent public transport links and amenities within a few minutes' walk.



Our Accreditations & Memberships



NEW

Pathways in France

www.lsi.edu/pathways/france

Why Study in France?

- World class institutions
- Convenient location in central Paris
- Safe and friendly student environment
- Cultural and economic centre

Pathways

LSI's Pathways programme (12-48 weeks)

Gain the language skills on our DELF and DALF examinations courses needed to meet language entry requirements at French colleges and universities.

Assistance in applying to up to 3 French universities. Additional fees apply.

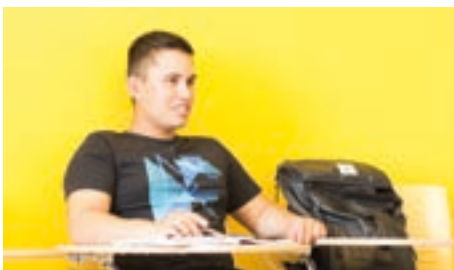
College or university programmes

Licenses (L1, L2, L3) are undergraduate degrees courses requiring 3 years of study. Master's (M1, M2) are graduate degree courses requiring 2 years of study.

Working in France

LSI, college or university students can work up to 20 hours per week with a French student visa

* Information subject to change. For up-to-date information please visit www.campusfrance.org/en/



LSI Campus in France

Paris

Situated in the historical heart of the city, LSI Paris is right by the Centre Pompidou and close to Notre Dame de Paris, and the sophisticated yet bohemian Marais and Les Halles districts. The school is easily accessible by Metro.

Our Accreditations & Memberships



Private Institute of Higher
Education Academy of Paris

Learn and live the language

UK

LSI London Central

19–21 Ridgmount Street
London WC1E 7AH
Tel. +44 (0)207 467 6500
Email: lon@LSI.edu

LSI London Hampstead

13 Lyndhurst Terrace
London NW3 5QA
Tel. +44 (0)207 794 8111
E-mail: ham@LSI.edu

LSI Brighton - Portland Campus

55-61 Portland Rd
Brighton BN3 5DQ
Tel. +44(0)1273 735 975
E-mail: bri@LSI.edu

LSI Brighton - Ventnor Campus

13 Ventnor Villas
Brighton BN3 3DD
Tel. +44 (0)1273 722 060
E-mail: bri@LSI.edu

LSI Cambridge

41 Tenison Road
Cambridge CB1 2DG
Tel. +44 (0)1223 361 783
E-mail: cam@LSI.edu

USA

LSI Berkeley

2015 Center Street
Berkeley CA 94704
Tel. +1 510 841 4695
Fax. +1 510 841 3015
E-mail: ber@LSI.edu

LSI San Diego

1706 5th Avenue
San Diego CA 92101
Tel. +1 619 234 2881
E-mail: san@LSI.edu

LSI Boston

105 Beach Street
Boston MA 02111
Tel. +1 617 542 3600
E-mail: bos@LSI.edu

LSI New York

40 Rector Street, 10th Floor,
Suite 1000
New York NY 10006
Tel. +1 212 965 9940
E-mail: nyc@LSI.edu

Canada

LSI Vancouver

2nd Floor
806 Homer Street
Vancouver B.C. V6B 2W5
Tel. +1 604 683 7654
E-mail: van@LSI.edu

LSI Toronto

Suite 210,
1055 Yonge Street
Toronto ON M4W 2L2
Tel. +1 416 928 6888
Fax. +1 416 928 3388
E-mail: tor@LSI.edu

New Zealand

LSI Auckland

Level 1, 10–12 Scotia Place
Auckland City
Tel. +64 (0)9 303 3097
Fax. +64 (0)9 303 3497
E-mail: auc@LSI.edu

Australia

LSI Brisbane

93 Edward Street
Brisbane QLD 4001
Tel. +61 (0)7 3221 6977
Fax. +61 (0)7 3221 6861
E-mail: bne@LSI.edu

France

LSI Paris

23 Rue du Renard
75004 Paris
Tel. +33 (0)1 4260 5370
E-mail: par@LSI.edu

Switzerland

LSI Zurich

Kreuzstrasse 36
8008 Zurich
Tel. +41 (0)44 251 5889
Fax. +41 (0)44 251 5805
E-mail: zur@LSI.edu



Visit lsi.edu to find out more about our
schools and take a virtual tour

LSI Pathway Programme Pre-Study Form

Student Information

Full Name:

Date of birth
(D/M/Y):

Nationality/Citizenship:

Agency:

LSI Student ID (if Applicable):

LSI Online Language Test Result (please take our
online test at www.lsi.edu/en/english-level-test):

Educational Background

What is your highest level of education?

- ☐ High School in Progress
- ☐ High School Completed
- ☐ Post-Secondary/Undergraduate Education in Progress
- ☐ Post-Secondary/Undergraduate Education Completed
- ☐ Graduate Studies in Progress
- ☐ Graduate Studies Completed

What field did you graduate in (if applicable)?

What certification did you receive (Certificate, Diploma, Degree, etc. if applicable)?

Professional Background

Please list any previous professional experiences you may have had (in the last three years):

Professional Background continued...

What are your future professional goals?

Educational Goals

Please select the study area of interest:

Please select the post-secondary certification of interest:

- ☐ Certificate (8 months - 1 year)
- ☐ Diploma (2 years)
- ☐ Advanced Diploma (3 years)
- ☐ Bachelor/Baccalaureate Degree (3-4 years)
- ☐ Post-Graduate/Post-Degree/Post Baccalaureate (8 months - 2 years)
- ☐ Master's Degree (1-2 years)

Where would you like to study?

Which LSI school would you like to study in?

- | | | | |
|-----------------------------------|------------------------------------|---|--|
| <input type="checkbox"/> Brighton | <input type="checkbox"/> Cambridge | <input type="checkbox"/> London Central | <input type="checkbox"/> London Hampstead |
| <input type="checkbox"/> Boston | <input type="checkbox"/> New York | <input type="checkbox"/> San Diego | <input type="checkbox"/> San Francisco/Berkeley |
| <input type="checkbox"/> Toronto | <input type="checkbox"/> Vancouver | <input type="checkbox"/> Brisbane | <input type="checkbox"/> Auckland <input type="checkbox"/> Paris |

Expected start date of LSI Pathway Programme:

Expected start date of university/college programme:



"I took the Cambridge FCE course and I was so happy about my English improvement. The teachers were some of the best I've ever had."

SARJA BERNHARD, SWITZERLAND



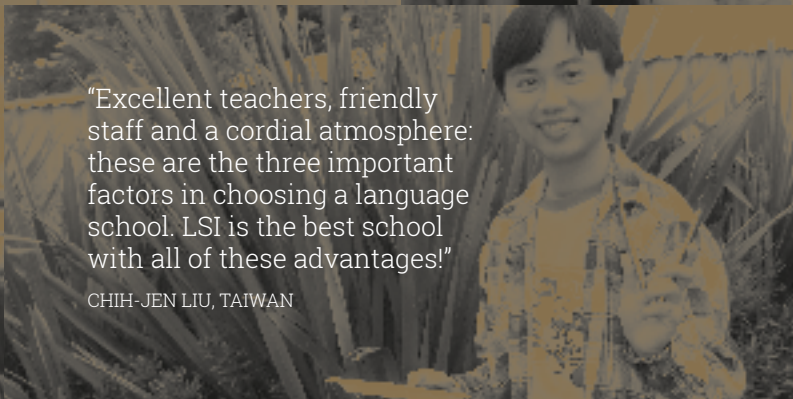
"Since I want to study International Management at university I need as many foreign languages as possible in order to succeed with my application. The TEF (French test) and TOEFL are almost standard must-haves."

INGA KATHARINA RADZIEJEWSKI, GERMANY



"My 5 months at LSI were really worthwhile. I particularly like the style of teaching. I definitely improved my English whilst I studied for the FCE exam."

MAELYS VESIR, NEW CALEDONIA



"Excellent teachers, friendly staff and a cordial atmosphere: these are the three important factors in choosing a language school. LSI is the best school with all of these advantages!"

CHIH-JEN LIU, TAIWAN

