



LSI schools in the UK, USA, Canada, Australia,  
New Zealand, France & Switzerland

# LSI Schools Around The World

## UK

### LSI London Central

19-21 Ridgmount Street  
London WC1E 7AH  
Tel. +44 (0)207 467 6500  
Email: lon@LSI.edu

### LSI London Hampstead

13 Lyndhurst Terrace  
London NW3 5QA  
Tel. +44 (0)207 794 8111  
E-mail: ham@LSI.edu

### LSI Brighton - Portland Campus

55-61 Portland Rd  
Brighton BN3 5DQ  
Tel. +44 (0)1273 722 060  
E-mail: bri@LSI.edu

### LSI Brighton - Ventnor Campus

13 Ventnor Villas  
Brighton BN3 3DD  
Tel. +44 (0)1273 722 060  
E-mail: bri@LSI.edu

### LSI Cambridge

41 Tenison Road  
Cambridge CB1 2DG  
Tel. +44 (0)1223 361 783  
E-mail: cam@LSI.edu

## USA

### LSI Berkeley

2015 Center Street  
Berkeley CA 94704  
Tel. +1 510 841 4695  
E-mail: ber@LSI.edu

### LSI San Diego

1706 5th Avenue  
San Diego CA 92101  
Tel. +1 619 234 2881  
E-mail: san@LSI.edu

### LSI Boston

105 Beach Street  
Boston MA 02111  
Tel. +1 617 542 3600  
E-mail: bos@LSI.edu

### LSI New York

40 Rector Street,  
10th Floor,  
Suite 1000  
New York NY 10006  
Tel. +1 212 965 9940  
E-mail: nyc@LSI.edu

## Canada

### LSI Vancouver

2nd Floor  
806 Homer Street  
Vancouver B.C. V6B 2W5  
Tel. +1 604 683 7654  
Fax. +1 604 683 7554  
E-mail: van@LSI.edu

### LSI Toronto

Suite 210,  
1055 Yonge Street  
Toronto ON M4W 2L2  
Tel. +1 416 928 6888  
Fax. +1 416 928 3388  
E-mail: tor@LSI.edu

## New Zealand

### LSI Auckland

Level 1,  
10-12 Scotia Place  
Auckland 1010  
Tel. +64 (0)9 303 3097  
Fax. +64 (0)9 303 3497  
E-mail: auc@LSI.edu

## Australia

### LSI Brisbane

6/133 Leichhardt Street  
Spring Hill  
Brisbane QLD 4000  
Tel. +61 (0)7 3221 6977  
E-mail: bne@LSI.edu

## France

### LSI Paris

23 Rue du Renard  
75004 Paris  
Tel. +33 (0)1 4260 5370  
E-mail: par@LSI.edu

## Switzerland

### LSI Zurich

Kreuzstrasse 36  
8008 Zurich  
Tel. +41 (0)44 251 5889  
Fax. +41 (0)44 251 5805  
E-mail: zur@LSI.edu



Visit [lsi.edu](http://lsi.edu) to find out more about our schools and take a virtual tour

All information correct at the time of printing.  
For the most up to date course information, please visit [www.lsi.edu](http://www.lsi.edu)

# The LSI Experience

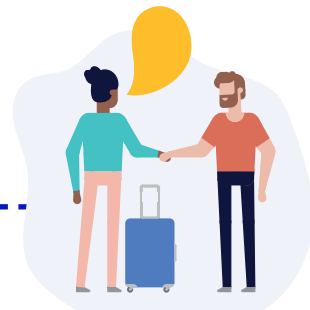
"LSI Hampstead provided an excellent environment to learn English and have fun. It was one of the best experiences of my life."

GABRIELLA ILLÉS, TV PRODUCER, HUNGARY



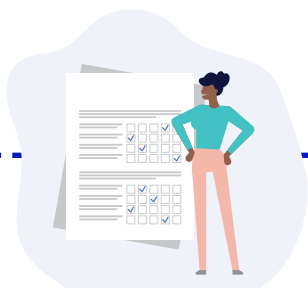
## Your LSI programme starts at home

With E-LSI you can access learning materials and start your academic programme as soon as you book.



## A warm welcome upon arrival

You will arrive to a warm welcome from your LSI host family or at your LSI residence to make sure you are comfortable and get fully settled.



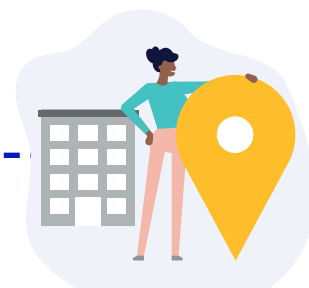
## Continuous appraisal

We continuously monitor your progress through a regular system of testing and customised learning plans. Through E-LSI you can access your academic information, including test scores and tutorial reports.



## First day in school

Our friendly staff will explain everything you need to know about your programme. You'll have a thorough skills test to ensure that we place you into the right class, we'll introduce you to our cultural and social programme and we'll ensure that you meet all your classmates and the school staff.



## Orientation in the school



## Clear and substantiated progress

Entry tests and exit tests, along with regular appraisal from our academic staff show you how much progress you've made during your programme.



## Graduation ceremony

In LSI's graduation ceremony, you'll receive your graduation certificate and celebrate your programme with your new friends

\* Not available in all LSI centres. Please check with the school at the time of booking

# London Central (£UK)

## General/Academic/English for Specific Purposes

(Price p/wk)	ACADEMIC TERM ABROAD		ACADEMIC YEAR ABROAD	
No. of weeks:	1-3	4-11	12-23	24+
Afternoon 10 <sup>^</sup>	165	160	155	150
General 20	310	300	290	270
Intensive 24	360	345	325	295
Intensive 30	410	375	355	315
Pathways			355	315
Academic English 30			355	315
English for Business 30*	410	375	355	315
TOEFL 30 /IELTS 30*	410	375	355	315
Course price (No. of weeks)	4	10	11	12
Cambridge 30	1500	3750	4125	4260
Medical English (10 lessons p/wk.)				355
Legal English (10 lessons p/wk.)				355
English for Teaching: groups (p/wk)				410
English for Teaching: G20 + 5 individuals (p/wk)				635
English for Teaching: G20 + 10 individuals (p/wk)				960
One to One Lesson				65
Plus Courses Supplement: 5/10 lessons				325/650

<sup>^</sup> Not available on a Short Term Study Visa

\* Options also available as Intensive 24

## Premium Courses

<b>One-to-one</b>						
No of lessons p/wk:	5	10	20	30	40	50
(Course price)	325	650	1300	1950	2600	3250
<b>Mini Group</b> (Business/General English/Exam Prep)						
No of lessons p/wk:			20	30	40	
(Price p/wk):			1 wk	710	985	1240
			2 wks	690	955	1220
			3 wks	670	925	1190
			4+ wks	645	905	1170
<b>9 Day Compact</b> No of lessons:				82	92	
(Course price)				5330	5980	

## Experiences

(Price p/wk)	
<b>Club 40+ Activities Supplement</b> (3 per week)	260

## Additional Costs

### EXAM FEES

B2 First / C1 Advanced / C2 Proficiency	185
IELTS	Contact us

### OTHER FEES

Registration fee	90
Placement fee - Volunteering in UK Charities experience	Contact us
Courier fee	85
Health Insurance (p/wk)	Contact us
Airport transfers (one way):	
Heathrow/London City	105
Gatwick/Stansted/Luton	130

## Accommodation

HOMESTAY (Prices per person p/wk for 1+ weeks)	B&B	HB
Single (45-60min from LSI London)	180	230
Twin* (45-60min from LSI London)	150	190
<b>Supplements</b>		
Up to 45min from LSI London		50
Executive supplement		85
Christmas		50
Summer (Jun 18 - Aug 27)		35
Special diets B&B/HB		25/45

Arrival and departure dates for Homestay: Saturday to Saturday or Sunday to Sunday.

## RESIDENCE (Prices per person p/wk)

<b>Don Gratton House</b>	
En-suite single room	from 345
<b>Chapter Portobello - zone 2 (no meals)</b>	
Single studio	from 380
<b>Drapery Place - (no meals)</b>	
En-suite single room	from 400

\* When two students book for the same start and end date

Other accommodation options available at [www.lsi.edu/accommodation](http://www.lsi.edu/accommodation)

## Additional Course Information

Class size: Max 15 students.

Lesson duration: 50 min (45 min for Premium Courses).

### General Courses, English for Business

Start dates for Elementary to Advanced levels: Each Monday.

Start dates for Beginner level: First Monday of Feb, Apr, Jun, Sep, Nov.

### Academic English/ IELTS & TOEFL iBT

Start date: Every Monday. Recommended start dates first Monday of January, April and September.

### Pathways/Academic Term Abroad (ATA)/Academic Year Abroad (AYA)

Start date: First Monday of January, April and September.

### Cambridge English Exam Preparation

Start dates: Jan 3: B2 & C1 - 10 wks

Mar 27: B2 & C1 - 12 wks

July 3: B2 & C1 - 4 wks

July 31: B2 & C1 - 4 wks

Sep 18: B2 & C1 - 12 wks/C2 - 11 wks

Exam dates: B2 First: Mar 10, Jun 17, Jul 27, Aug 24, Dec 9

C1 Advanced: Mar 11, Jun 17, Jul 28, Aug 25, Dec 9

C2 Proficiency: Dec 2

All exams are paper based

### Medical English, Legal English

8 weeks course. Start Jan 9, July 3.

### English for Teaching

Start dates: Contact us.

### Premium Courses

Start dates (One-to-one, Mini Group): Every Monday.

Start dates (9 Day Compact): Every Saturday.

### Club 40+

Start Dates: Mar 6th, May 2nd, Sep 4th, Nov 6th. Limited availability in the summer.

### Public Holidays

No instruction on the following dates: Jan 2, Apr 7, 10, May 1, 8, 29, Aug 28.

School is closed from Dec 22 2023 to Jan 1 2024 inclusive.

# London Hampstead (£UK)

[www.lsi.edu/yl-hampstead](http://www.lsi.edu/yl-hampstead)

## Junior Courses

Registration fee	90
Programme for ages 6-11 and 12-17 <sup>1</sup>	(p/wk) 330
English tuition only	330
Tuition, lunch + activities (ages 12-17 only) <sup>2</sup>	550
Programme plus full board homestay in twin room accommodation (for ages 12–17 years only) <sup>2</sup> :	(p/wk)
In winter	800
In summer	825
Programme plus full board residential accommodation (ages 12 -17 years):	(p/wk) 1175
Airport transfer required (one way):	
Heathrow/London City	105
Gatwick/Stansted/Luton	130
Check-in service <sup>3</sup>	40

<sup>1</sup> Students aged 6-11 years must be accompanied by a parent or guardian. The programme for ages 6-11 includes tuition only.

<sup>2</sup> Travel card not included in the programme.

<sup>3</sup> Compulsory fee for unaccompanied minors under 16, optional for juniors aged 16-17 years.

Class size: 18 students.  
Lesson duration: 50 min.

### Start dates

Winter 2023: Every Monday from Jan 3 to Feb 6 (course ends Feb 10) - GROUPS ONLY.

Summer 2023: Every Monday from Jun 26 to Aug 7 (course ends Aug 11).

Winter 2024: Every Monday from Jan 2 to Feb 5 (course ends Feb 9).

### Additional course information

Standard timetable: Arrivals on Sunday and departures on Saturday.

Maximum booking length for accommodation is 4 weeks (27 nights) for under 16s.

### Junior Courses for Groups

In addition to our published start dates, the school can accept groups for a variety of age ranges at various times throughout the year. Maximum class sizes for closed group, subject to negotiation.

One group leader may accompany each group of 10–15 students for free (including transfers, accommodation and activities).



# Brighton (£UK)

[www.lsi.edu/brighton](http://www.lsi.edu/brighton)

## General/Academic/English for Specific Purposes

(Price p/wk)	ACADEMIC TERM ABROAD		ACADEMIC YEAR ABROAD	
No. of weeks:	1-3	4-11	12-23	24+
Afternoon 10 <sup>^</sup>	165	160	155	150
General 20	310	300	290	270
Intensive 24	360	345	325	295
Intensive 30	410	375	355	315
Pathways			355	315
Academic English 30			355	315
English for Business 30*	410	375	355	315
TOEFL 30 /IELTS 30*	410	375	355	315
Course price (No. of weeks)		4	10	12
Cambridge 30		1500	3750	4260
English for Teaching: groups (p/wk)				410
English for Teaching: G20 + 5 individuals (p/wk)				635
English for Teaching: G20 + 10 individuals (p/wk)				960
Course price (No. of weeks)				4
Intensive Cambridge CELTA Teacher Training				from 1430#
One to One Lesson				65
Plus Courses Supplement: 5/10 lessons				325/650

<sup>^</sup> Not available on a Short Term Study Visa

\* Options also available as Intensive 24

# Application required, exam fee included in the fee

## Premium Courses

One-to-one						
No of lessons p/wk:	5	10	20	30	40	50
(Course price)	325	650	1300	1950	2600	3250
9 Day Compact	No of lessons:				82	92
(Course price)					5330	5980

## Experiences

Club 40+ Activities Supplement (3 per week)	260
---	-----

## Additional Costs

### EXAM FEES

B2 First / C1 Advanced	185
IELTS	Contact us

### OTHER FEES

Registration fee	90
Placement fee - Volunteering in UK Charities experience	Contact us
Courier fee	85
Health Insurance (p/wk)	Contact us
Airport transfers (one way):	
Heathrow	170
Gatwick	95
Stansted/Luton	230

## Accommodation

HOMESTAY (Prices per person p/wk for 1+ weeks)	B&B	HB
Single	160	200
Twin*	140	180

### Supplements

Executive supplement	85
Christmas	50
Summer (Jun 18 - Aug 27)	35
Special diets B&B/HB	25/45

Arrival and departure dates for Homestay: Saturday to Saturday or Sunday to Sunday.

## RESIDENCE (Prices per person p/wk for 1+ weeks)

Portland 55 - on-site residence (Self catering per person p/wk)	
Single room, en suite	265
Twin room*, en suite	230

### Mountford Student House

Single room, shared bathroom	Contact us
Twin room*, shared bathroom	Contact us

### Supplement

Summer (Jun 18 - Aug 27)	35
--------------------------	----

\* When two students book for the same start and end date

Other accommodation options available at [www.lsi.edu/accommodation](http://www.lsi.edu/accommodation)

## Additional Course Information

Class size: Max 15 students.

Lesson duration: 50 min (45 min for Premium Courses).

### General Courses, English for Business

Start dates for Elementary to Advanced levels: Each Monday.

### Academic English/ IELTS & TOEFL iBT

Start date: Every Monday. Recommended start dates first Monday of January, April and September.

### Pathways/Academic Term Abroad (ATA)/Academic Year Abroad (AYA)

Start date: First Monday of January, April and September.

### Cambridge English Exam Preparation

Start dates: Jan 03: B2 & C1 - 10 wks  
 July 31: B2 & C1 - 4 wks  
 Sep 11: B2 & C1 - 12 wks  
 Exam dates: B2 First: Mar 10, Aug 24, Nov 28  
 C1 Advanced: Mar 11, Aug 25, Nov 29

All exams are paper based

### English for Teaching

Start dates: Every Monday.

### CELTA Teacher Training

Start dates: Contact the school.

### Premium Courses

Start dates (One-to-one): Every Monday.

Start dates (9 Day Compact): Every Saturday.

### Club 40+

Start Dates: Mar 6th, May 2nd, Sep 4th, Nov 6th.

### Public Holidays

No instruction on the following dates: Jan 2, Apr 7, 10, May 1, 8, 29, Aug 28.  
 School is closed from Dec 22 2023 to Jan 1 2024 inclusive.

[www.lsi.edu/yl-brighton](http://www.lsi.edu/yl-brighton)

## Junior Courses

Registration fee	90
Programme for ages 6-11 <sup>1</sup> and 12-17 <sup>2</sup> years	(p/wk)
English tuition only	310
Tuition, lunch + activities (ages 12-17 years only) <sup>2</sup>	535
Programme plus full board homestay in twin room accommodation (ages 12-17 years):	(p/wk)
In winter	755
In summer	790
Airport transfer required (one way):	
Heathrow	170
Gatwick	95
Stansted/Luton	230
Check-in service <sup>3</sup>	40

<sup>1</sup> Students aged 6-11 years must be accompanied by a parent or guardian. The programme for ages 6-11 includes tuition only.

<sup>2</sup> Travel costs included.

<sup>3</sup> Compulsory fee for unaccompanied minors under 16, optional for juniors aged 16-17 years.

Class size: 18 students.

Lesson duration: 50 min.

### Start dates

Winter 2023: Every Monday from Jan 3 to Feb 6 (course ends Feb 10) - GROUPS ONLY.

Summer 2023: Every Monday from Jun 26 to Aug 7 (course ends Aug 11).

Winter 2024: Every Monday from Jan 2 to Feb 5 (course ends Feb 9) - GROUPS ONLY.

### Additional course information

Standard timetable: Arrivals on Sunday and departures on Saturday.

Maximum booking length for accommodation is 4 weeks (27 nights) for under 16s.

### Junior Courses for Groups

In addition to our published start dates, the school can accept groups for a variety of age ranges at various times throughout the year. Maximum class sizes for closed group, subject to negotiation. One group leader may accompany each group of 10-15 students for free (including transfers, accommodation and activities).

## General/Academic/English for Specific Purposes

(Price p/wk)	ACADEMIC TERM ABROAD		ACADEMIC YEAR ABROAD	
No. of weeks:	1-3	4-11	12-23	24+
Afternoon 10 <sup>^</sup>	165	160	155	150
General 20	310	300	290	270
Intensive 24	360	345	325	295
Intensive 30	410	375	355	315
Pathways			355	315
Academic English 30			355	315
English for Business 30*	410	375	355	315
TOEFL 30 /IELTS 30*	410	375	355	315
Course price (No. of weeks)			4	12
Cambridge 30			1500	4260
One to One Lesson				65
Plus Courses Supplement: 5/10 lessons				325/650
<sup>^</sup> Not available on a Short Term Study Visa				
* Options also available as Intensive 24				

## Premium Courses

One-to-one						
No of lessons p/wk:	5	10	20	30	40	50
(Course price)	325	650	1300	1950	2600	3250
9 Day Compact No of lessons:					82	92
(Course price)					5330	5980

## Experiences

(Price p/wk)		
Club 40+ Activities Supplement (3 per week)		260

## Additional Costs

## EXAM FEES

B2 First / C1 Advanced	185
IELTS	Contact us

## OTHER FEES

Registration fee	90
Placement fee - Volunteering in UK Charities experience	Contact us
Courier fee	85
Health Insurance (p/wk)	Contact us
Airport transfers (one way):	
Heathrow	185
Gatwick	205
Stansted	115
Luton	125

## Accommodation

HOMESTAY (Prices per person p/wk for 1+ weeks)	B&B	HB
Single	165	210
Twin*	145	190
<b>Supplements</b>		
Christmas		50
Summer (Jun 18 - Aug 27)		35
Special diets B&B/ HB		25/45

Arrival and departure dates for Homestay: Sunday to Sunday.

\* When two students book for the same start and end date.

## RESIDENCE (Prices per person p/wk)

The Willows (Self catering, all year)	
Single	230
Single with shower	250
Executive single, ensuite	265
Studio	300

Other accommodation options available at [www.lsi.edu/accommodation](http://www.lsi.edu/accommodation)

## Additional Course Information

Class size: Max 15 students.

Lesson duration: 50 min (45 min for Premium Courses).

## General Courses, English for Business

Start dates for Elementary to Advanced levels: Each Monday.

## Academic English/ IELTS &amp; TOEFL iBT

Start date: Every Monday. Recommended start dates first Monday of January, April and September.

## Pathways/Academic Term Abroad (ATA)/Academic Year Abroad (AYA)

Start date: First Monday of January, April and September.

## Cambridge English Exam Preparation

Start dates: Mar 6: B2 &amp; C1 - 10 wks

July 31: B2 &amp; C1 - 4 wks

Sep 18: B2 &amp; C1 - 12 wks

Exam dates: B2 First: May 13, Aug 24, Dec 9

C1 Advanced: May 11, Aug 25, Dec 9

## Premium Courses

Start dates (one-to-one): Every Monday.

Start dates (9 Day Compact): Every Saturday.

## Club 40+

Start Dates: Mar 6th, May 2nd, Sep 4th, Nov 6th.

## Public Holidays

No instruction on the following dates: Jan 2, Apr 7, 10, May 1, 8, 29, Aug 28.

School is closed from Dec 22 2023 to Jan 1 2024 inclusive.

## Junior Courses

Registration fee	90
Programme for ages 9-11 <sup>1</sup> and 12-17	(p/wk)
English tuition only	330
Tuition, lunch + activities (for ages 12-17 only) <sup>2</sup>	595
Programme plus full board homestay in twin room accommodation (ages 12-17 years) <sup>2</sup> :	(p/wk)
In winter	755
In summer	815
Programme plus full board residential accommodation in Abbey College (ages 9 -17 years) <sup>2</sup> :	(p/wk)
Single room (summer)	1090
Airport transfer required (one way):	
Heathrow	185
Gatwick	205
Stansted	115
Luton	125
Check-in service <sup>3</sup>	40

<sup>1</sup> Students will generally be classed in groups aged 9-12 and 13-17. Classes may occasionally cross these age ranges if of academic benefit. Ages 9-11 are only accepted if accompanied by an elder sibling, guardian or group leader.<sup>2</sup> Travel costs included.<sup>3</sup> Compulsory fee for unaccompanied minors under 16, optional for juniors aged 16-17 years.

Class size: 18 students.

Lesson duration: 50 min.

## Start dates

Winter 2023: Every Monday from Jan 3 to Feb 6 (course ends Feb 10) - GROUPS ONLY.

Summer 2023: Every Monday from Jul 3 to Aug 7 (course ends Aug 11).

Winter 2024: Every Monday from Jan 2 to Feb 5 (course ends Feb 9) - GROUPS ONLY.

## Additional course information

Standard timetable: Arrivals on Sunday and departures on Saturday.

Maximum booking length for homestay accommodation is 4 weeks (27 nights) for under 16s.

## Junior Courses for Groups

In addition to our published start dates, the school can accept groups for a variety of age ranges at various times throughout the year. Maximum class sizes for closed group, subject to negotiation. One group leader may accompany each group of 10-15 students for free (including transfers, accommodation and activities).

# New York (\$US)

[www.lsi.edu/ny](http://www.lsi.edu/ny)

## General/Academic/English for Specific Purposes

(Price p/wk)	ACADEMIC TERM ABROAD		ACADEMIC YEAR ABROAD	
No. of weeks:	1-3	4-11	12-23	24+
<b>Afternoon 10</b> ^	245	215		
<b>General 20</b>	455	435	415	385
<b>Intensive 25</b>	520	495	470	435
<b>Intensive 30</b>	570	540	510	470
<b>Academic English 30</b>			510	470
<b>English for Business 30</b> *	570	540	510	470
<b>TOEFL 30 /IELTS 30</b> *	570	540	510	470
Course price (No. of weeks)				12
<b>Cambridge 30</b>				6120
<b>English for Teaching: groups only (p/wk)</b>				570
<b>English for Teaching: G20 + 5 individuals (p/wk)</b>				955
<b>English for Teaching: G20 + 10 individuals (p/wk)</b>				1455
<b>SAT/GMAT: groups only (p/wk)</b>				570
<b>One to One Lesson</b>				100
<b>Plus Courses Supplement: 5/10 lessons</b>				500/1000

^ Not available on a Student Visa

\* English for Business 30 and TOEFL 30 also available as Intensive 25

## Premium Courses

<b>One-to-one</b>	5	10	20	30	40
No of lessons p/wk:					
(Course price)	500	1000	2000	3000	4000

<b>Mini Group</b> (Business/General English/Exam Prep)				
No of lessons p/wk:	20			
(Price p/wk):	1 wk	1045	1515	
	2 wks	1020	1495	
	3 wks	1015	1455	
	4+ wks	1005	1420	

## Experiences

(Price p/wk)	
<b>Club 40+ Activities Supplement</b> (3 per week)	380

## Additional Costs

### EXAM FEES

B2 First / C1 Advanced	Contact us
------------------------	------------

### OTHER FEES

Registration fee	100
Course materials fee (one-off fee)	75
Courier fee	85
Health insurance (p/wk)	30
Airport transfers (one way)	165

## Accommodation

Placement fee	150
---------------	-----

<b>HOMESTAY</b> (Prices per person p/wk for 1+ weeks)	B&B	HB
Single room (zone 3)	340	410
Twin room** (zone 3)	295	355

<b>Zone supplements</b>	
Upper Manhattan (Single, B&B)	230
Upper Manhattan (Executive Single, B&B)	415
Zone 1	100
Zone 2	75
<b>Other Supplements</b>	
Christmas	60
Summer (Jun 18 - Aug 27)	40
Special diets B&B/HB	25/45

Arrival and departure dates for Homestay: Saturday to Saturday or Sunday to Sunday.

## RESIDENCE (Per person p/wk, up to 3 weeks)

<b>YMCA Residence, West Side</b>	
Single, shared bathroom	Contact us
Twin, shared bathroom **	Contact us

No meals (include access to sport and fitness facilities).

\*\* When two students book for the same start and end date

Other accommodation options available at [www.lsi.edu/accommodation](http://www.lsi.edu/accommodation)

## Additional Course Information

Class size: Max 16 students.  
Lesson duration: 50 min (50 min for Premium Courses).

**General Courses, English for Business**  
Start dates for Elementary to Advanced levels: every Monday.  
Start dates for Beginner level: First Monday of Jan, Mar, May, Jul, Sep, Nov.

**Academic English/IELTS & TOEFL iBT**  
Start date: Every Monday. Recommended start dates first Monday of January, April and September.

**Academic Term Abroad (ATA)/Academic Year Abroad (AYA)**  
Start date: First Monday of January, April and September.

**Cambridge English Exam Preparation**  
Start dates: Mar 13: B2 & C1 - 12 wks  
Sep 18: B2 & C1 - 12 wks  
Exam dates: B2 First: Jun 3, Dec 9  
C1 Advanced: Jun 3, Dec 9  
Exam dates can change at short notice due to demand. Please contact the school.

**SAT/GMAT, English for Teaching**  
Start dates: contact the school.

**Premium Courses**  
Start dates (one-to-one, Mini Group): Every Monday.

**Club 40+**  
Start Dates: Mar 6th, May 1st, Sep 5th, Nov 6th.

**Public Holidays**  
No instruction on the following dates: Jan 2, 16, Feb 20, Apr 7, 10, May 29, Jun 19, Jul 4, Sep 4, Oct 9, Nov 10, 23, 24.

School is closed from Dec 22 2023 to Jan 1 2024 inclusive.



# Boston (\$US)

[www.lsi.edu/boston](http://www.lsi.edu/boston)

## General/Academic/English for Specific Purposes

(Price p/wk)	ACADEMIC TERM ABROAD		ACADEMIC YEAR ABROAD	
No. of weeks:	1-3	4-11	12-23	24+
<b>Afternoon 10</b> ^	220	210		
<b>General 20</b>	425	405	385	355
<b>Intensive 25</b>	485	460	435	400
<b>Intensive 30</b>	545	515	485	445
<b>Academic English 30</b>			485	445
<b>English for Business 30</b> *	545	515	485	445
<b>TOEFL 30 /IELTS 30</b> *	545	515	485	445
Course price (No. of weeks)	12			
<b>Cambridge 30</b>	5820			
<b>English for Teaching: groups</b> (p/wk)	545			
<b>English for Teaching: G20 + 5 individuals</b> (p/wk)	900			
<b>English for Teaching: G20 + 10 individuals</b> (p/wk)	1375			
<b>SAT/GMAT: groups</b> (p/wk)	545			
<b>One to One Lesson</b>	95			
<b>Plus Courses Supplement: 5/10 lessons</b>	475/950			

^ Not available on a Student Visa

\* English for Business 30 and TOEFL 30 also available as Intensive 25

## Premium Courses

<b>One-to-one</b>			
No of lessons p/wk:	5	10	20
(Course price)	475	950	1900
<b>Mini Group</b> (Business/General English/Exam Prep)			
No of lessons p/wk:	20	30	
(Price p/wk):	1 wk	1025	1505
	2 wks	1005	1470
	3 wks	985	1430
	4+ wks	965	1400

## Additional Costs

### EXAM FEES

B2 First / C1 Advanced	Contact us
------------------------	------------

### OTHER FEES

Registration fee	175
Courier fee	85
Health insurance (p/wk)	30
Airport transfers (one way)	130

## Accommodation

Placement fee	150	
<b>HOMESTAY</b> (Prices per person p/wk for 1+ weeks)	B&B	HB
Single room	275	350
Twin room**	245	300
<b>Supplements</b> p/wk		
Executive	90	
Christmas	60	
Summer (Jun 18 - Aug 27)	40	
Special diets B&B/HB	25/45	

Arrival and departure dates for Homestay: Saturday to Saturday or Sunday to Sunday.

## RESIDENCE (Prices per person p/wk)

### ESL Townhouse (no meals, 4 weeks minimum staying)

Single room, shared bathroom	Contact us
Twin room, shared Bathroom**	Contact us

\$200 refundable security deposit charged on arrival at the residence. \$200 Non-Refundable move in fee charged.

### IGH - International Guest House

Single room, shared bathroom	Contact us
Twin, shared bathroom**	Contact us

Saturday to Saturday accommodation only.

\$200 refundable security deposit charged on arrival at the residence (Cash only).

\*\* When two students book for the same start and end date.

Other accommodation options available at [www.lsi.edu/accommodation](http://www.lsi.edu/accommodation)

## Additional Course Information

Class size: Max 16 students.

Lesson duration: 50 min (50 min for Premium Courses).

### General Courses, English for Business

Start dates for Elementary to Advanced levels: every Monday.

Start dates for Beginner level: Jan 9, Apr 10, July 3, Oct 2.

### Academic English/IELTS & TOEFL iBT

Start date: Every Monday. Recommended start dates first Monday of January, April and September.

### Academic Term Abroad (ATA)/Academic Year Abroad (AYA)

Start date: First Monday of January, April and September.

### Cambridge English Exam Preparation

Start dates: Mar 13: B2 & C1 – 12 wks

Sep 11: B2 & C1 – 12 wks

Exam dates: B2 First: Jan 9, July 7

C1 Advanced: Jan 9, July 7

Exam dates can change at short notice due to demand. Please contact the school.

### SAT/GMAT, English for Teaching

Start dates: contact the school.

### Premium Courses

Start dates (one-to-one, Mini Group): Every Monday.

### Public Holidays

No instruction on the following dates: Jan 2, 16, Feb 20, Apr 7, 10, May 29, Jun 19, Jul 4, Sep 4, Oct 9, Nov 10, 23, 24.

School is closed from Dec 22 2023 to Jan 1 2024 inclusive.

# San Diego (\$US)

[www.lsi.edu/sd](http://www.lsi.edu/sd)

## General/Academic/English for Specific Purposes

(Price p/wk)	ACADEMIC TERM ABROAD		ACADEMIC YEAR ABROAD	
No. of weeks:	1-3	4-11	12-23	24+
<b>Afternoon 10</b> <sup>^</sup>	220	210		
<b>General 20</b>	425	405	385	355
<b>Intensive 25</b>	485	460	435	400
<b>Intensive 30</b>	545	515	485	445
<b>Pathways</b>			485	445
<b>Academic English 30</b>			485	445
<b>English for Business 30*</b>	545	515	485	445
<b>TOEFL 30 /IELTS 30*</b>	545	515	485	445
Course price (No. of weeks)		8	10	12
<b>Cambridge 30</b>		4120	5150	5820
<b>SAT/GMAT: groups only (p/wk)</b>				545
<b>One to One Lesson</b>				95
<b>Plus Courses Supplement: 5/10 lessons</b>				475/950

<sup>^</sup> Not available on a Student Visa

\* English for Business 30 and TOEFL 30 also available as Intensive 25

## Premium Courses

<b>One-to-one</b>				
No of lessons p/wk:		10	20	
(Course price)		950	1900	
<b>Mini Group</b> (Business/General English/Exam Prep)				
No of lessons p/wk:		20	30	
(Price p/wk):		1 wk	1025	1505
		2 wks	1005	1470
		3 wks	985	1430
		4+ wks	965	1400

## Additional Costs

<b>EXAM FEES</b>	
B2 First / C1 Advanced / C2 Proficiency	Contact us
<b>OTHER FEES</b>	
Registration fee	175
Courier fee	85
Health insurance (p/wk)	30
Airport transfers (one way)	145
Airport transfer U18 supplement	55

## Accommodation

Placement fee		150
<b>HOMESTAY</b> (Prices per person p/wk for 1+ weeks)	B&B	HB
Single room	270	345
Twin room**	240	295
<b>Supplements</b>		
Executive		90
Christmas		60
Summer (Jun 18 - Aug 27)		40
Special diets B&B/HB		25/45

Arrival and departure dates for Homestay: Saturday to Saturday or Sunday to Sunday.

\*\* When two students book for the same start and end date.

Other accommodation options available at [www.lsi.edu/accommodation](http://www.lsi.edu/accommodation)

## Additional Course Information

Class size: Max 16 students. Lesson duration: 50 min (50 min for Premium Courses).

### General Courses, English for Business

Start dates for Elementary to Advanced levels: Every Monday.

Start dates for Beginner level: Jan 9, Apr 10, July 3, Oct 2.

### Academic English/IELTS & TOEFL iBT

Start date: Every Monday. Recommended start dates first Monday of January, April and September.

### Pathways/Academic Term Abroad (ATA)/Academic Year Abroad (AYA)

Start date: First Monday of January, April and September.

### Cambridge English Exam Preparation

Start dates: Mar 13: B2 & C1 – 12 wks

Sep 11: B2 & C1 – 12 wks

Exam dates: B2 First: Jan 9, July 7

C1 Advanced: Jan 9, July 7

Exam dates can change at short notice due to demand. Please contact the school.

### SAT/GMAT

Start dates: contact the school.

### Premium Courses

Start dates (one-to-one, Mini Group): Every Monday.

### Public Holidays

No instruction on the following dates: Jan 2, 16, Feb 20, Apr 7, 10, May 29, Jun 19, Jul 4, Sep 4, Oct 9, Nov 10, 23, 24.

School is closed from Dec 22 2023 to Jan 1 2024 inclusive.

[www.lsi.edu/yl-sandiego](http://www.lsi.edu/yl-sandiego)

## Junior Courses

Registration fee	175
Programme for ages 6-11 <sup>1</sup> and 12-17	(p/wk)
English tuition only (winter)	435
English tuition only (summer)	455
Tuition, lunch + activities (winter, ages 12-17 only) <sup>2</sup>	880
Tuition, lunch + activities (summer, ages 12-17 only) <sup>2</sup>	905
Programme plus full board homestay in shared room accommodation (for ages 12-17 years) <sup>2</sup> :	(p/wk)
In winter	1280
In summer	1340
Airport transfer required (one way) <sup>3</sup>	145
Airport transfer U18 supplement	55
Health Insurance (p/wk)	30

<sup>1</sup> Students aged 6-11 years must be accompanied by a parent or guardian. The programme for ages 6-11 includes

tuition only. English tuition and activities package may be available. Contact school for information and prices.

<sup>2</sup> Travel cost included.

<sup>3</sup> For unaccompanied minors prices available on request.

Class size: 18 students.  
Lesson duration: 50 min.

### Start dates

Winter 2023: Every Monday from Jan 3 to Feb 6 (course ends Feb 10).

Summer 2023: Every Monday from Jun 26 to Jul 31 (course ends Aug 4).

Winter 2024: Every Monday from Jan 2 to Feb 5 (course ends Feb 9).

### Additional course information

Standard timetable: Arrivals on Sunday and departures on Saturday.

### Junior Courses for Groups

In addition to our published start dates, the school can accept groups for a variety of age ranges at various times throughout the year. Maximum class sizes for closed group, subject to negotiation. One group leader may accompany each group of 10–15 students for free (including transfers, accommodation and activities).

# San Francisco/Berkeley (\$US)

[www.lsi.edu/berkeley](http://www.lsi.edu/berkeley)

## General/Academic/English for Specific Purposes

(Price p/wk)	ACADEMIC TERM ABROAD		ACADEMIC YEAR ABROAD	
No. of weeks:	1-3	4-11	12-23	24+
<b>Afternoon 10</b> <sup>^</sup>	220	210		
<b>General 20</b>	425	405	385	355
<b>Intensive 25</b>	485	460	435	400
<b>Intensive 30</b>	545	515	485	445
<b>Academic English 30</b>			485	445
<b>English for Business 30</b> *	545	515	485	445
<b>TOEFL 30 /IELTS 30</b> *	545	515	485	445
<b>English for Teaching: groups only (p/wk)</b>	545			
<b>SAT/GMAT: groups only (p/wk)</b>	545			
<b>One to One Lesson</b>	95			
<b>Plus Courses Supplement: 5/10 lessons</b>	475/950			

<sup>^</sup> Not available on a Student Visa

\* English for Business 30 and TOEFL 30 also available as Intensive 25

## Premium Courses

<b>One-to-one</b>	5	10
No of lessons p/wk:		
(Course price)	475	950

<b>Mini Group</b> (Business/General English/Exam Prep)	20	30
No of lessons p/wk:		
(Price p/wk):	1 wk 1025	1505
	2 wks 1005	1470
	3 wks 985	1430
	4+ wks 965	1400

## Additional Costs

<b>EXAM FEES</b>	Contact us
TOEFL 30	Contact us

<b>OTHER FEES</b>	
Registration fee	175
Courier fee	85
Health insurance (p/wk)	30
Airport transfers (one way)	130

## Junior Courses

Registration fee	175
Programme for ages 12-17	(p/wk)
English tuition only	460
Tuition, lunch + activities <sup>1</sup>	905
Programme plus full board homestay in twin room accommodation (for ages 12-17 years) <sup>1</sup> :	(p/wk)
In summer	1365
Airport transfer required (one way) <sup>2</sup>	130
Health Insurance (p/wk)	30

<sup>1</sup> Travel costs included.

<sup>2</sup> For unaccompanied minors prices available on request.

Class size: 18 students.  
Lesson duration: 50 min.

## Accommodation

Placement fee	150	
<b>HOMESTAY</b> (Prices per person p/wk for 1+ weeks)	B&B	HB
Single room	305	380
Twin room**	265	330
<b>Supplements</b>		
Executive	90	
Christmas	60	
Summer (Jun 18 - Aug 27)	40	
Special diets B&B/HB	25/45	

Arrival and departure dates for Homestay: Saturday to Saturday or Sunday to Sunday.

## RESIDENCE (Prices per person p/wk)

<b>Downtown Berkeley - YMCA</b>	320
Single room, shared bathroom	320
\$250 refundable security deposit charged on arrival at the residence. \$200 Non-Refundable move in fee charged.	

\*\* When two students book for the same start and end date.

Other accommodation options available at [www.lsi.edu/accommodation](http://www.lsi.edu/accommodation)

## Additional Course Information

Class size: Max 16 students.  
Lesson duration: 50 min (50 min for Premium Courses).

**General Courses, English for Business**  
Start dates for Elementary to Advanced levels: Every Monday.

**Academic English/IELTS & TOEFL iBT**  
Start date: Every Monday. Recommended start dates first Monday of January, April and September.

**Academic Term Abroad (ATA)/Academic Year Abroad (AYA)**  
Start date: First Monday of January, April and September.

**English for Teaching**  
Start dates: contact the school.

**Premium Courses**  
Start dates (One-to-one, Mini Group): Every Monday.

**Public Holidays**  
No instruction on the following dates: Jan 2, 16, Feb 20, Apr 7, 10, May 29, Jun 19, Jul 4, Sep 4, Oct 9, Nov 10, 23, 24.

School is closed from Dec 22 2023 to Jan 1 2024 inclusive.

[www.lsi.edu/yl-berkeley](http://www.lsi.edu/yl-berkeley)

## Start dates

Summer 2023: Every Monday from Jun 26 to Jul 31 (course ends Aug 5) - GROUPS ONLY.

## Additional course information

Standard timetable: Arrivals on Sunday and departures on Saturday.

## Junior Courses for Groups

In addition to our published start dates, the school can accept groups for a variety of age ranges at various times throughout the year. Maximum class sizes for closed group, subject to negotiation. One group leader may accompany each group of 10-15 students for free (including transfers, accommodation and activities).

# Toronto (\$CD)

## General/Academic/English for Specific Purposes

(Price p/wk)	ACADEMIC TERM ABROAD		ACADEMIC YEAR ABROAD	
No. of weeks:	1-3	4-11	12-23	24+
<b>Afternoon 10</b> <sup>^</sup>	205	200		
<b>General 20</b>	395	385	375	355
<b>Intensive 25</b>	435	425	415	390
<b>Intensive 30</b>	475	465	455	425
<b>Pathways</b>			455	425
<b>Academic English 30</b>			455	425
<b>English for Business 30*</b>	475	465	455	425
<b>TOEFL 30 /IELTS 30*</b>	475	465	455	425
Course price (No. of weeks)		8	10	12
<b>Cambridge 30</b>		3720	4650	5460
<b>Medical English</b> (10 lessons p/wk.)				560
<b>Legal English</b> (10 lessons p/wk.)				560
<b>One to One Lesson</b>				105
<b>Plus Courses Supplement:</b> 5/10 lessons				525/1050

<sup>^</sup> Not available on a Study Permit

\* Options also available as Intensive 25

## Premium Courses

<b>One-to-one</b>	5	10	20	30	40	50
No of lessons p/wk:						
(Course price)	525	1050	2100	3150	4200	5250

<b>Mini Group</b> (Business/General English/Exam Prep)		20	30
No of lessons p/wk:			
(Price p/wk):		1125	1495
		1005	1320
		955	1275
		930	1245
<b>9 Day Compact</b> No of lessons:		82	92
(Course price)		8610	9660

## Experiences

(Price p/wk)	
<b>Club 40+ activities supplement (3 per week)</b>	380

## Additional Costs

### EXAM FEES

B2 First / C1 Advanced	365
------------------------	-----

### OTHER FEES

Registration fee	175
Textbook (Cambridge Exams)	90
Courier fee	110
Health insurance (p/wk)	20
Notary fees for unaccompanied minors (U18)	70
Airport transfers (one way)	125

## Accommodation

Placement fee		215
<b>HOMESTAY</b> (Prices per person p/wk)	B&B	HB
Single room	235	270
Twin room*	220	260
<b>Supplements</b>		
Christmas		50
Summer (Jun 18 - Aug 27)		75
Special diets B&B/HB		25/45
U18 Supplement		20
Executive		85

Arrival and departure dates for Homestay: Saturday to Saturday or Sunday to Sunday.

\* When two students book for the same start and end date.

## RESIDENCE (Prices per person p/wk)

<b>Toronto Metropolitan University (May–Aug)</b>	
Single room, private bathroom	Contact us

Other accommodation options available at [www.lsi.edu/accommodation](http://www.lsi.edu/accommodation)

## Additional Course Information

Class size: Max 16 students.

Lesson duration: 50 min (50 min for Premium Courses).

### General Courses, English for Business

Start dates for Elementary to Advanced levels: Every Monday.

Start dates for Beginner level: First Monday of Feb, Apr, Jun, Sep, Nov.

### Academic English/IELTS & TOEFL iBT

Start date: Every Monday. Recommended start dates first Monday of January, April and September.

### Pathways/Academic Term Abroad (ATA)/Academic Year Abroad (AYA)

Start date: First Monday of January, April and September.

### Cambridge English Exam Preparation

Start dates: Jan 03: B2 & C1 - 10 wks

Mar 20: B2 & C1 - 12 wks

July 03: B2 & C1 - 8 wks

Sep 11: B2 & C1 - 12 wks

Exam dates: B2 First: Mar 10, Jun 6, Aug 24, Nov 28

C1 Advanced: Mar 11, Jun 7, Aug 25, Nov 29

All exams are paper based.

### Medical English, Legal English

8 weeks course. Start January 9, July 3.

### Premium Courses

Start dates (one-to-one, Mini Group): Every Monday.

Start dates (9 Day Compact): Every Saturday.

### Club 40+

Start Dates: First Monday of each month.

Suggested start dates: Mar 6th, May 1st, Sep 5th, Nov 6th.

### Public Holidays

No instruction on the following dates: Jan 2, Feb 20, Apr 7, 10, May 22, Jul 3, Aug 7, Sep 4, 29, Oct 9, Nov 13.

School is closed from Dec 23 2023 to Jan 1 2024 inclusive.

## Junior Courses

Registration fee	175
Programme for ages 6-11 <sup>1</sup> and 12-17 years	(p/wk)
English tuition only	410
Tuition, lunch + activities (winter, ages 12-17 only) <sup>2</sup>	850
Tuition, lunch + activities (summer, ages 12-17 only) <sup>2</sup>	905
Programme plus full board homestay in twin room accommodation (for ages 12-17 years) <sup>2</sup>	(p/wk)
In winter	1190
In summer	1245
Programme plus full board residential accommodation (for ages 13-17 years, groups only)	(p/wk)
Single room (summer)	1950
Airport transfers (one way) <sup>3</sup>	125
Health Insurance (p/wk)	20
Custodianship service available (if requested by Canadian Embassy)	70

<sup>1</sup> Students aged 6-11 years must be accompanied by a parent or guardian. The programme for ages 6-11 includes tuition only. English tuition and activities package may be available. Contact school for information and prices.

<sup>2</sup> Travel cost included.

<sup>3</sup> Compulsory fee for unaccompanied minors under 16, options for aged 16-17 years.

Class size: 18 students.

Lesson duration: 50 min.

### Start dates

Winter 2023: Every Monday from Jan 3 to Feb 6 (course ends Feb 10) - GROUPS ONLY.

Summer 2023: Every Monday from Jun 26 to Aug 7 (course ends Aug 11).

Winter 2024: Every Monday from Jan 2 to Feb 5 (course ends Feb 9) - GROUPS ONLY.

### Additional course information

Standard timetable: Arrivals on Sunday and departures on Saturday.

### Junior Courses for Groups

In addition to our published start dates, the school can accept groups for a variety of age ranges at various times throughout the year. Maximum class sizes for closed group, subject to negotiation. One group leader may accompany each group of 10–15 students for free (including transfers, accommodation and activities).

# Vancouver (\$CD)

[www.lsi.edu/vancouver](http://www.lsi.edu/vancouver)

## General/Academic/English for Specific Purposes

(Price p/wk)	ACADEMIC TERM ABROAD		ACADEMIC YEAR ABROAD	
No. of weeks:	1-3	4-11	12-23	24+
Afternoon 10 <sup>^</sup>	205	200		
General 20	395	385	375	355
Intensive 25	435	425	415	390
Intensive 30	475	465	455	425
Pathways			455	425
Academic English 30			455	425
English for Business 30*	475	465	455	425
TOEFL 30 /IELTS 30*	475	465	455	425
Course price (No. of weeks)			10	12
Cambridge 30			4650	5460
One to One Lesson				105
Plus Courses Supplement: 5/10 lessons				525/1050

<sup>^</sup> Not available on a Student Visa

\* Options also available as Intensive 25

## Premium Courses

One-to-one								
No of lessons p/wk:	5	10	20	30	40	50		
(Course price)	525	1050	2100	3150	4200	5250		
Mini Group (Business/General English/Exam Prep)								
No of lessons p/wk:						20	30	
(Price p/wk):						1 wk	1125	1495
						2 wks	1005	1320
						3 wks	955	1275
						4+ wks	930	1245
9 Day Compact No of lessons:						82	92	
(Course price)						8610	9660	

## Experiences

(Price p/wk)	
Club 40+ activities supplement (3 per week)	380

## Additional Costs

### EXAM FEES

B2 First/ C1 Advanced / C2 Proficiency	Contact us
--	------------

### OTHER FEES

Registration fee	175
Textbook (Cambridge Exams)	90
Courier fee	110
Health insurance (p/wk)	20
Notary fees for unaccompanied minors (U19)	70
Airport transfers (one way)	125

## Junior Courses

Registration fee	175
Programme for ages 12–17 years	(p/wk)
English tuition only	410
Tuition, lunch + activities <sup>1</sup>	905
Programme plus full board homestay in twin room accommodation (for ages 12-17 years) <sup>1</sup> :	(p/wk)
In summer	1245
Airport transfer required (one way) <sup>2</sup>	125
Health Insurance (p/wk)	20
Custodianship service available (if requested by Canadian Embassy)	70

<sup>1</sup> Travel cost included

<sup>2</sup> Compulsory fee for unaccompanied minors under 16, options for aged 16-17 years.

## Accommodation

Placement fee		215
<b>HOMESTAY</b> (Prices per person p/wk)	B&B	HB
Single room	235	270
Twin room*	220	260
<b>Supplements</b>		
Christmas		50
Summer (Jun 18 - Aug 27)		75
Special diets B&B/HB		25/45
U18 Supplement		20
Executive		85

Arrival and departure dates for Homestay: Saturday to Saturday or Sunday to Sunday.  
\* Only when two students book together for the same dates.

## RESIDENCE (Prices per person p/wk)

YWCA Residence	
Single room, shared bathroom	from 735
Double room, private bathroom <sup>#</sup>	from 550
Summer Supplement (Jun to Sep)	120

\$220 Non-Refundable move in fee charged.  
<sup>#</sup> When two students book for the same start and end date

Other accommodation options available at [www.lsi.edu/accommodation](http://www.lsi.edu/accommodation)

## Additional Course Information

Class size: Max 16 students.  
Lesson duration: 50 min (50 min for Premium Courses).

**General Courses, English for Business**  
Start dates for Elementary to Advanced levels: Every Monday.  
Start dates for Beginner level: First Monday of Feb, Apr, Jun, Sep, Nov.

**Academic English/IELTS & TOEFL iBT**  
Start date: Every Monday. Recommended start dates first Monday of January, April and September.

**Pathways/Academic Term Abroad (ATA)/Academic Year Abroad (AYA)**  
Start date: First Monday of January, April and September.

**Cambridge English Exam Preparation**  
Start dates: Jan 03: B2 & C1 - 10 wks  
Mar 20: B2 & C1 - 12 wks  
Sep 11: B2, C1 & C2 - 12 wks  
Exam dates: B2 First: Mar 10, Jun 10, Nov 28  
C1 Advanced: Mar 11, Jun 7, Nov 29  
C2 Proficiency: Nov 30

Exam dates can change at short notice due demand. Please contact the school.

**Premium Courses**  
Start dates (one-to-one, Mini Group): Every Monday.  
Start dates (9 Day Compact): Every Saturday.

**Club 40+**  
Start Dates: First Monday of each month.  
Suggested start dates: Mar 6th, May 1st, Sep 5th, Nov 6th.

**Public Holidays**  
No instruction on the following dates: Jan 2, Feb 20, Apr 7, 10, May 22, Jul 3, Aug 7, Sep 4, 30, Oct 9, Nov 11.

School is closed from Dec 22 2023 to Jan 1 2024 inclusive.

[www.lsi.edu/yl-vancouver](http://www.lsi.edu/yl-vancouver)

Class size: Max 18 students.  
Lesson duration: 50 min.

**Start dates**  
Summer 2023: Every Monday from Jun 26 to Aug 7 (course ends Aug 11) - GROUPS ONLY.

**Additional course information**  
Standard timetable: Arrivals on Sunday and departures on Saturday.

**Junior Courses for Groups**  
In addition to our published start dates, the school can accept groups for a variety of age ranges at various times throughout the year. Maximum class sizes for closed group, subject to negotiation. One group leader may accompany each group of 10–15 students for free (including transfers, accommodation and activities).



# Auckland (\$NZ)

## General/Academic/English for Specific Purposes

(Price p/wk)	ACADEMIC TERM ABROAD		ACADEMIC YEAR ABROAD	
No. of weeks:	1-3	4-11	12-23	24+
Afternoon 10 <sup>^</sup>	210	205		
General 20	405	400	395	
Intensive 24	460	455	450	440
Evening Intensive 24	460	455	450	440
Intensive 30	515	510	505	495
Pathways			505	495
Academic English 30*			505	495
English for Business 30**	515	510	505	495
TOEFL 30 /IELTS 30**	515	510	505	495
Course price (No. of weeks)			9	12
Cambridge 30			4590	6060
Medical English (10 lessons p/wk.)				720
Legal English (10 lessons p/wk.)				720
English for Aviation G20 +5 individuals (p/wk)				955
English for Aviation G20 +10 individuals (p/wk)				1505
English for Teaching: G20 + 5 individuals (p/wk)				955
English for Teaching: G20 +10 (p/wk)				1505
One to One Lesson				110
Plus Courses Supplement: 5/10 lessons				550/1100

<sup>^</sup> Not available on a Student Visa

\* Also available as Intensive 24, Intensive 30

\*\* Also available as Intensive 24

## Premium Courses

One-to-one	5	10	20	30	40	50
No of lessons p/wk:						
(Course price)	550	1100	2200	3300	4400	5500

Mini Group (Business/General English/Exam Prep)	No of lessons p/wk:	20
(Price p/wk):		
	1 wk	1440
	2 wks	1340
	3 wks	1300
	4+ wks	1285

## Experiences (Price p/wk)

Club 40+ activities supplement (3 per week)	450
---	-----

## Additional Costs

### EXAM FEES

B2 First / C1 Advanced / C2 Proficiency	340~
TOEFL 30/ IELTS 30	Contact us
~ An extra fee applies for reservations less than 6 weeks before exam date	

### OTHER FEES

Registration fee	215
Course materials p/wk up to max. 20 wks	20
Demi au pair placement fee	Contact us
Courier fee	130
Health Insurance (p/wk)	Contact us
Airport transfer (one way)	115
Airport transfer* (U18)	130

\* Compulsory for U18

## Accommodation

Placement fee		300
<b>HOMESTAY</b> (Prices per person p/wk)	B&B	HB
Single/Twin room**	290	360
Single room under 18s		370
<b>Supplements</b>		
Extra Homestay Night		80
Christmas		75
Executive Supplement		75
Special diets B&B/HB		35/65
Winter fuel supplement (Jul 1st to September 30th)		20
Arrival and departure dates for Homestay: Saturday to Saturday or Sunday to Sunday.		

## RESIDENCE (Prices per person p/wk)

City Lodge (No meals)	
Single room, private bathroom	from 420
Double room**, private bathroom	from 250
Twin room (2 beds)**	from 255
<b>YMCA</b> (no meals)	
Single room	from 350

\*\* When two students book for the same start and end date.

Other accommodation options available at [www.lsi.edu/accommodation](http://www.lsi.edu/accommodation)

## Additional Course Information

Class size: Max 16 students.

Lesson duration: 50 min (45 min for Premium Courses).

### General Courses, English for Business

Start dates for Elementary to Advanced levels: Every Monday.

Start dates for Beginner level: First Monday of Jan, Mar, May, Jul, Sep, Nov.

### Evening Intensive 24

Start dates for Intermediate to Advanced: Every Monday.

Beginners to pre-intermediate levels will need to study in the morning programme until reaching an acceptable level.

### Academic English/IELTS & TOEFL iBT

Start date: Every Monday. Recommended start dates first Monday of January, April and September.

### Pathways/Academic Term Abroad (ATA)/Academic Year Abroad (AYA)

Start date: First Monday of January, April and September.

### Cambridge English Exam Preparation

Start dates: Jan 04: B2 & C1 - 10 wks/C2 - 9 wks

Mar 20: B2 & C1 - 12 wks

Sep 11: B2, C1, C2 - 12 wks

Exam dates: B2 First: Mar 10, Jun 6, Nov 28

C1 Advanced: Mar 11, Jun 7, Nov 29

C2 Proficiency: Mar 4, Nov 30

### Medical English, Legal English

8 weeks course. Start September 4.

### English for Aviation

Start date: Contact school.

### Premium Courses

Start dates (one-to-one, Mini Group): Every Monday.

### Club 40+

Start Dates: Mar 6th, May 1st, Sep 4th, Nov 6th.

### Public Holidays

No instruction on the following dates: Jan 2, 3, 30, Feb 6, Apr 7, 10, 25, Jun 5, Jul 14, Oct 23.

School is closed from Dec 25 2023 to Jan 5 2024 inclusive.

# Brisbane (\$AU)

[www.lsi.edu/brisbane](http://www.lsi.edu/brisbane)

## General/Academic/English for Specific Purposes

(Price p/wk)	ACADEMIC TERM ABROAD		ACADEMIC YEAR ABROAD	
No. of weeks:	1-3	4-11	12-23	24+
<b>Afternoon 10</b> ^	210	200		
<b>General 20</b> (Up to 17 wks) ^	395	385	375	
<b>Intensive 24</b>	460	450	440	415
<b>Intensive 30</b>	505	495	485	455
<b>BEC Vantage (Business English Certificate) 30</b>	505	495	485	455
<b>IELTS Preparation 30</b>	505	495	485	455
Course price (No. of weeks)	12			
<b>Intensive 30 with Cambridge Exam Preparation</b>	5820			
<b>One to One Lesson</b>	125			
<b>Plus Courses</b> Supplement: 5/10 lessons	625/1250			

^ Not available on a Student Visa

## Premium Courses

<b>One-to-one</b>	5	10	20	30	40	50
No of lessons p/wk:						
(Course price)	625	1250	2500	3750	5000	6250

## Additional Costs

### EXAM FEES

B2 First / C1 Advanced	Contact us
IELTS	Contact us

### OTHER FEES

Registration fee	260
Course materials p/wk (up to a max. of 20 wks)	15
Demi au pair/Au pair placement fee (up to 12 weeks)	Contact us
Courier fee	85
Overseas student health Insurance (p/wk)	Contact us
Airport transfers (one way)*	135

\* Compulsory for U18

## Accommodation

Placement fee	300	
<b>HOMESTAY</b> (Prices per person p/wk)	B&B	HB
Single/Twin room**	260	330
<b>Supplements</b>		
U18 Full Board (p/wk)	95	
Executive, ensuite	70	
Special diets B&B/HB	55/70	

Arrival and departure dates for Homestay: Saturday to Saturday or Sunday to Sunday.

\*\* When two students book for the same start date.

Other accommodation options available at [www.lsi.edu/accommodation](http://www.lsi.edu/accommodation)

## Additional Course Information

Class size: Max 18 students.  
Lesson duration: 50 min (45 min for Premium Courses).

### General Courses, Intensive Courses

Start dates for Elementary to Advanced levels: Every Monday.  
Start dates for Beginner level: Jan 9, Apr 10, July 3, Oct 2.

### Cambridge English Exam Preparation and BEC Vantage

Start dates: Mar 13: B2 & C1 – 12 wks  
Sep 11: B2 & C1 – 12 wks  
Exam dates: B2 First: Jan 9, July 7  
C1 Advanced: Jan 9, July 7

### IELTS Exam Preparation

Start dates: Jan 09: 12 wks  
Jun 26: 12 wks  
Exam dates: Mar 30, Sep 15

### Premium Courses

Start dates (one-to-one): Every Monday.

### Public Holidays

No instruction on the following dates: Jan 2, 26, Apr 7, 10, 25, May 1, Aug 16, Oct 2.

School is closed from Dec 25 2023 to Jan 5 2024 inclusive.

CRICOS Provider 01678A

## Paris (€)

## General/Academic

(Price p/wk)	ACADEMIC TERM ABROAD		ACADEMIC YEAR ABROAD	
No. of weeks:	1-3	4-11	12-23	24+
Afternoon 10 ^	190	175		
General 20#	380	345	325	300
Intensive 24	430	395	375	350
Intensive 30	480	445	420	395
Pathways			420	395
Course price (No. of weeks)	2	4	8	12
DELF			3560	
CCIP			3560	
TEF (2 wks+)	960	1780	3560	4680
One to One Lesson				100
Plus Courses Supplement: 5/10 lessons				500/1000

^ Not available on a Student Visa  
# Not available to student visa holders from some countries. Check with your embassy.

## Premium Courses

One-to-one						
No of lessons p/wk:	5	10	20	30	40	50
(Course price)	500	1000	2000	3000	4000	5000
9 Day Compact No of lessons:					82	92
(Course price)					8200	9200

## Experiences

(Price p/wk)	
Cooking (2 wks)	970
History of Art (2 wks)	1060

## Additional Costs

## EXAM FEES

DELF A2/B1	250
DELF B2	305
e-TEF Compulsory	175

## OTHER FEES

Registration fee	100
Courier fee	125
Airport transfers:	Contact us
Roissy CDG/Orly	120

## Accommodation

Placement fee	100
---------------	-----

HOMESTAY (zone 1-2, prices per person p/wk)	B&B	Semi HB*	HB
Single room	255	325	345
Twin room**	230	285	315

## Supplements

Executive, single room (private shower only)	50
--	----

HB is compulsory for U18s

Arrival and departure dates for Homestay: Sunday to Sunday.

\* No evening meal on Fri and Sat

\*\* When two students book for the same start date

## RESIDENCE (prices per person, p/wk)

Mije Le Marais (Half Board)	
Dormitory room (4-10 people)	Contact us
High season supplement (Feb - Jul)	Contact us

Other accommodation options available at [www.lsi.edu/accommodation](http://www.lsi.edu/accommodation)

## Additional Course Information

Class size: Max 16 students.

Lesson duration: 50 min (45 min for Premium Courses).

## General Courses

Start dates for Elementary to Advanced levels: Every Monday.

Start dates for Beginner level: First Monday of every month.

## DELF &amp; CCIP

Start date: Contact LSI Paris.

## TEF

Start date: Every Monday.

## Pathways/Academic Term Abroad (ATA)/Academic Year Abroad (AYA)

Start date: Every Monday. Recommended start dates first Monday of January, April and September.

## Premium Courses

Start dates (One-to-one): Every Monday.

Start dates (9 Day Compact): Every Saturday.

## French with Cooking

Start Dates: Jan 9, Jun 5, Jul 3, Aug 7.

## French with History of Art

Start Dates: Mar 13, Jun 19, Jul 17, Sep 18.

## Public Holidays

No instruction on the following dates: Apr 10, May 1, 8, 18, 29, Jul 14, Aug 15, Nov 1.

School is closed from Dec 16 2023 to Jan 1 2024 inclusive.

## Zurich (CHF)

www.lsi.edu/zurich

## General/Academic

(Price p/wk)	ACADEMIC TERM ABROAD	ACADEMIC YEAR ABROAD		
No. of weeks:	1-3	4-11	12-23	24+
Afternoon 10 ^	260	240		
General 20	500	460	440	390
Intensive 30	660	620	600	550
Course price (No. of weeks)				12
Goethe-Zertifikat B1				7200
Goethe-Zertifikat B2				7200
One to One Lesson				110
Plus Courses Supplement: 5/10 lessons				550/1100

^ Not available on a Student Visa

## Premium Courses

One-to-one						
No of lessons p/wk:	5	10	20	30	40	50
(Course price)	550	1100	2200	3300	4400	5500
9 Day Compact No of lessons:				82	92	
(Course price)				9020	10120	

## Experiences

(Price p/wk)	
Club 40+ afternoon activities only (3 per week)	355

## Additional Costs

## EXAM FEES

Goethe-Zertifikat B1	300
Goethe-Zertifikat B2	360

## OTHER FEES

Registration fee	135
Course materials p/wk up to max 20 wks	15
Courier fee	175
Airport transfers (one way)	165

## Accommodation

Placement fee	135
---------------	-----

HOMESTAY (zone 1-2, prices per person p/wk)	B&B	HB
Single room	360	455
Twin room*	280	355

## Supplements

Executive supplement single/twin	85/65
HB is compulsory for U18s	
Arrival and departure dates for Homestay: Sunday to Saturday.	
* When two students book for the same start and end date	

## RESIDENCE

LSI can advise on residences and availability but students are required by Swiss law to make bookings directly with the accommodation provider

Maximilianeum 13 (self-catering) per person, p/month	
Single room	590/730
Single room with balcony	800

Other accommodation options available at [www.lsi.edu/accommodation](http://www.lsi.edu/accommodation)

## Additional Course Information

Class size: Max 12 students.

Lesson duration: 45 min.

## General Courses

Start dates for Elementary to Advanced levels: Every Monday.

Start dates for Beginner level: First Monday of every second month

Feb 6, Apr 3, Jun 5, Jul 3, Sep 4, Nov 6.

For interim start dates please contact the school directly.

## Pathways/Academic Term Abroad (ATA)/Academic Year Abroad (AYA)

Start date: Every Monday. Recommended start dates first Monday of January, April and September.

## Goethe-Zertifikat B1 (ZD), B2 (GZ)

Start date: Feb 6, Apr 11, Jun 5, Sep 4.

Exam dates: Apr 27-29, Jun 28-30, Aug 23-25, Nov 22-24.

## Premium Courses

Start dates (One-to-one): Every Monday.

Start dates (9 Day Compact): Every Saturday.

## Club 40+

Start dates: Mar 6th, May 2nd, Sep 4th, Nov 6th.

## Public Holidays

No instruction on the following dates: Jan 2, Apr 7, 10, May 1, 18, 29, Aug 1.

School is closed from Dec 25 2023 to Jan 5 2024 inclusive.

# LSI Terms and Conditions

## CONDITIONS OF ENROLMENT

### 1. Application

Please send the signed enrolment form to your chosen LSI school or Educational Tour Operator with the enrolment fee and, if applicable, the courier fee. Students over 18 (19 in Vancouver) must sign the enrolment form to say that they have read and agree with these terms and conditions. The parents or guardians of students under 18 (19 in Vancouver) must read and also sign the enrolment form on their behalf. Your privacy is important to us. Please note that by submitting your personal data to us, you are accepting the terms described in our privacy policy, which can be found at: [www.lsi.edu/privacy](http://www.lsi.edu/privacy)

### 2. Payment conditions

All course fees must be paid in full no later than 30 days before the course starts. If a booking is made less than 30 days before the course starts, the fees are immediately payable. If payment in full has not been received, you will not be allowed to start your course.

**Australia:** For individual courses longer than 24 weeks, 50% of tuition fees and 100% of all other fees must be paid in full no later than 30 days before the course starts. If a booking is made less than 30 days before the course starts, the fees are immediately payable. The remainder of the tuition fees is required two weeks before the start of the second study period of any individual course.

**New Zealand:** All student fees are to be deposited in the following account: Language Studies International (NZ) Ltd – Student Fees Trust Account (details on invoice). In the event of insolvency, regulatory closure or withdrawal, or partial withdrawal of accreditation, LSI students may apply to dfk Oswin Griffiths Carlton for a refund of unused fees. Please post claims to LSI Student Fees Trust, dfk Oswin Griffiths Carlton, Level 4, 52 Symonds St, Auckland 1010, NZ

### 3. Bank charges

LSI reserves the right to charge up to an additional 2.75% processing fee for all credit card payments. For payments made via bank transfer, LSI reserves the right to charge an additional fee to cover bank charges. In both these cases, students will be informed of any such fees at the time of purchase.

### 4. Visa information

It is the responsibility of the student to arrange all applicable travel permits or visas and to have a valid passport and leave to remain for the whole period of study. The student may be asked to make payment in full prior to the issuing of any of the visa documentation referred to below. LSI is not liable for any decisions made by the Immigration departments of the countries concerned.

**UK:** If your application is successful, we will provide a Confirmation of Acceptance of Studies (Tier 4 GSV and CSV applicants only). Tier 4 applicants must provide a Secure English Language Test (SELT) to establish their level of English is appropriate before they apply for their visa. Students whose level of English is lower than intermediate should use the Student Visitor route SVV or ESVV. See the following website for further details: [www.ukba.homeoffice.gov.uk/studyingintheuk](http://www.ukba.homeoffice.gov.uk/studyingintheuk)

**USA:** Once we have received your application, we will send a Proof of Funds form, which must be completed in order for LSI to issue you a Certificate of Eligibility (Form I-20), which is required in order to apply for a student visa at the US Consulate.

**Canada:** We will provide you with an invitation letter to assist you with your visa application.

**New Zealand:** In accordance with government regulations, visa support (Fees Receipt and Acceptance Letter) is only issued by LSI when full payment has been received. Full details of visa and permit requirements, advice on rights to employment in New Zealand while studying, and reporting requirements are available through the New Zealand Immigration Service and can be viewed on their website at: [www.immigration.govt.nz](http://www.immigration.govt.nz). We strongly recommend LSI NZ students to check information on this website, including but not limited to, medical certificate requirements associated with visa applications. By agreeing to our Terms & Conditions upon enrolment, LSI NZ students are confirming that they have been made aware of information found on this website.

**Australia:** Visa application forms (Confirmation of Enrolment) may not be issued by the school until full payment has been received and the enrolment agreement has been signed and returned. The enrolment agreement includes reference to the pre-departure and grievance procedures information and can be found on our website: [www.lsi.edu](http://www.lsi.edu)

**Switzerland:** We recommend you check the CH Immigration website for the most up to date information about Visas and Immigration regulations. For courses which are longer than 12 weeks, a student visa must be obtained prior to entry into Switzerland. Fees must be paid in advance in order to obtain the documents required for the student visa application. Please visit the website: [www.bfm.admin.ch/bfm/en/home.html](http://www.bfm.admin.ch/bfm/en/home.html) for full information about visa applications and travelling to Switzerland. The student visa application process for Zurich takes at least 3 months to complete.

### 5. Courier fees

If you enrol on a course in the USA less than 30 days before the course start date and require an I-20, a courier fee of US\$65 will be charged to cover the expedition of visa documentation. If you enrol more than 30 days before the course start date, documentation will be sent by normal postal service, unless you request and pay for the courier service. In all other countries, a courier service is available on request. UK: £75, Canada: CAD\$100, New Zealand: NZ\$115, Australia: AU\$75, France: €115, Switzerland: CHF165

### 6. Under 18 year olds (19 in Vancouver)

LSI delivers adult courses (except for programmes advertised as being for Juniors). Therefore, students aged 16 and 17 will be attending classes and sharing facilities with students aged 18 and over. Under 18 year olds may be required to pay a guardian fee, provide custodianship documents, live in LSI-approved accommodation, book LSI's airport transfer service and purchase insurance. All students under 18 (19 in Vancouver) must provide a signed Parental Consent form prior to arrival, and for Canada they must also provide a signed Health Declaration and excursion waiver form.

**New Zealand:** Students under the age of 18 staying in family accommodation must book half-board and a return airport transfer. Unless otherwise requested by a parent or guardian, students under the age of 18 staying in family accommodation will be expected to return to their accommodation by no later than 22.00 hours each evening.

### 7. Health declaration

Students must report on their enrolment form any mental or physical illness, allergy, disability or condition and details of any associated medicines that may interfere with their ability to successfully complete their programme, that may impact the health and well-being of any other student, host or staff member, that may require monitoring, treatment or emergency intervention of any kind during the student's anticipated period of enrolment, or that may require special accommodations. LSI reserves the right to reject an applicant or terminate a student's enrolment in the programme if the student's continued participation represents a risk to their health and safety or to the health and safety of other students or staff, or if, notwithstanding reasonable accommodations, in the opinion of LSI, the student's physical or mental condition makes the student unable or unlikely to successfully complete their programme. Any refunds in such circumstances will be made at the discretion of LSI.

**Immunizations:** In order to register, all students must have had the required immunizations, subject to the current guidelines of local medical authorities where LSI schools operate. It is the student's responsibility to ensure that they have had the applicable immunizations before departure and they may be required to provide evidence upon arrival. More information about immunizations currently required can be obtained from the local LSI school.

### 8. Additional services

Any additional services (transfers, travel, laundry, telephone costs, excursions, medical costs, special diet, exam fees, change of accommodation and enrolment amendments) are not included in any fees unless specifically stated on a valid invoice.

### 9. Twin accommodation

At LSI's discretion, students may be required to book single room accommodation instead of twin room accommodation.

### 10. Travel and medical insurance

Travel and medical insurance is strongly recommended at all LSI schools for the duration of your stay, regardless of your course length or course/visa type. For some programme or visa types, insurance is compulsory (please check with the school for further details). It is your responsibility to ensure that you have the appropriate cover before departure and for the duration of your stay. Students may be required to show proof of medical insurance at the school upon arrival and may not be allowed to commence a course until satisfactory medical insurance has been obtained. Travel and medical insurance can be purchased from a third party through LSI when booking. Details of what this covers are available from your Educational Tour Operator. You are responsible for the belongings which you bring with you to LSI schools or accommodation and for taking out insurance for your own possessions.

**Australia:** The Australian government requires all students on Student Visas to join the Overseas Student Health Cover (OSHC) scheme, a health insurance plan for overseas students in Australia. Payment of AU\$48/month for compulsory OSHC for the duration of the student's visa must be made before a visa can be issued.

**New Zealand:** Most international students are not entitled to publicly funded health services while in New Zealand. If you receive medical treatment during your visit, you may be liable for the full costs of that treatment. Full details on entitlements to publicly funded health services are available through the Ministry of Health and can be viewed on their website at [www.moh.govt.nz](http://www.moh.govt.nz). In addition, The Accident Compensation Corporation provides accident insurance for all New Zealand citizens, residents and temporary visitors to New Zealand, but you may still be liable for all other medical and related costs. Further information can be viewed on the ACC website at [www.acc.co.nz](http://www.acc.co.nz).

**Switzerland:** We recommend all students staying for periods up to 3 months apply for full travel and medical insurance before leaving their home country. Once a student is at the school, we provide assistance to those wishing to apply for Swiss medical insurance for periods of study extending beyond this initial 3 months.

### 11. Postponement

In the event of a course postponement, you may be re-booked at the rates currently in effect at the time of re-booking. 3 postponements will be free of charge, while upon a 4th postponement request, LSI will charge a postponement fee, an amount equivalent to the registration fee.

### 12. Special Offers

Special Offers must be booked and paid for prior to the stated expiration date. The relevant special offer code must be provided at the time of booking. Promotion prices apply to new enrolments only. Existing enrolments cannot be cancelled and rebooked at the promotion price. Only one special offer is valid per enrolment. Special offers cannot be combined. All special offers are subject to availability and are subject to change.

## GENERAL

### 1. Rules and regulations

Students' arrangements with LSI are governed by the law of the country where the particular school attended is located.

### 2. Programme changes

LSI reserves the right to change course dates, course curricula, course schedules, tutors, locations and programmes at any time at its discretion. In cases where the course is rescheduled prior to the start of the first course and the new date is unacceptable to the student, all fees will be refunded. However fees will not be refunded for changes to weekly timetables.

### 3. Arrivals and departures

Depending on the school, accommodation is booked from either Saturday or Sunday before the course start date until the Saturday or Sunday after the course end date. Please check with the individual school for details. A partial week may be counted as 1 week's accommodation. Students arriving between

22:30 – 6:00 may be asked to book alternative accommodation in a hotel on their first night due to late/early arrival at accommodation, or be charged an extra night of accommodation. Certain residences may also have set arrival times. Please check with the school for further details.

### 4. Residential housing deposit

A refundable deposit may be charged on arrival to students taking residential accommodation. The deposit is returned unless there is damage, loss or extra cleaning to be paid for on the student's departure. In some cases the deposit may be non-refundable if the booking is cancelled. Please refer to our various accommodation brochures for further details.

### 5. Late arrivals, vacations and absences

If you begin your enrolment late or are absent during your course, no refund will be made for the time missed. Periods of absence cannot be made up with a free extension of the course. Vacation dates are pre-built into the Academic Year and students cannot make changes to these dates. Breaks taken at other times will be marked as periods of absence. For other courses, granting of any Session Breaks after the course has started will be at the discretion of individual schools, according to visa regulations, and may incur a change fee (except in the USA) or be marked as a period of absence.

### 6. Public holidays

Classes are normally not held and most school facilities are closed on public holidays. All published course start dates fall on a Monday. If the Monday is a public holiday, the start date will fall on a Tuesday. Compensation will not be made for classes not offered on public holidays.

### 7. Meals and classes missed

No refunds or substitutions will be made for meals or classes missed due to exams, excursions, internships, first day orientation or other obligations that fall outside the normal schedule.

### 8. Substitution policy

If, after the placement test taken on arrival at the school, a student is found to be at a level which is not appropriate for their booked course, the school reserves the right to place the student in an appropriate level class, or LSI centre, which may have fewer lessons and a different curriculum. Students who do not have the ability to follow any course on offer may be required to terminate their studies with LSI. We also reserve the right to cancel courses at short notice due to insufficient demand.

### 9. Books and learning materials

All books and learning materials will be made available to students during their course. Unless otherwise stated, students share class sets of course books and receive photo copies.

In New Zealand, Australia, Canada, France & Switzerland a materials fee is charged. New Zealand: NZ\$20 p/wk (max 20 weeks), Australia: AU\$15 p/wk (max 20 weeks), Canada: CA\$75 (Cambridge courses), France: €10 p/wk (max 20 weeks) & Switzerland: CHF15 p/wk (max 20 weeks).

### 10. Duration of lessons/timetable/class sizes

All English lessons are 50 minutes in duration unless otherwise stated. Courses run from Monday to Friday and lessons are scheduled in the morning or the afternoon. LSI cannot guarantee a specific timetable.

### 11. LSI Level Policy

Through a rigorous system of skills testing, students are organised into classes with the other students in the school who have the closest equivalent language level. LSI operates up to six different levels, from Beginner to Advanced, which have been closely matched to the Common European Framework, TOEFL iBT, TOEIC, IELTS and University of Cambridge examinations. To reach each level students must master specific level objectives, demonstrated through test scores and class participation. Subject to student numbers, and ensuring the learning outcomes of every student in the class, LSI may operate bridge classes where two LSI levels are taught together.

### 12. Electives

Electives refer to the various options offered as part of LSI's Intensive 24, 25 and 30 lessons per week programmes. Electives include, but are not limited to, TOEFL iBT, TOEIC, IELTS, English for Business and Fluency. For a full list of electives available, please refer to the school pages on our website. In order to ensure all electives are available year round, subject to student numbers and ensuring the learning outcomes of every student in the class, courses may sometimes be combined.

### 13. Cambridge Language Assessment

Subject to student numbers and ensuring the learning outcomes of every student in the class, Cambridge 30 lessons per week programmes may be combined with LSI's Intensive English programme and/or electives.

### 14. Change fees

A minimum of 2 weeks' notice is required for any change (2 weeks' notice in USA). If you request a change of school location, course dates, accommodation or programme type after your course has started, you will be charged a change fee of UK: £60, Canada: CAD\$100, New Zealand: NZ\$100, Australia: AU\$100, France: €100, Switzerland: CHF100, which is payable at the time the request is made. LSI is not obliged to fulfil any change request. If changing to a location where fees are lower, the difference in fees will not be refunded. If changing to a more expensive location or programme, the difference in fees will be charged. You will not be charged a change fee if you extend your course.

All changes are subject to LSI's discretion and require approval of the Programme Director. It is the responsibility of the student to pay for any course or accommodation extensions. Any change of tuition resulting in a reduction in lessons will be treated as a termination of the existing booking and rebooking (except in the USA), and will thus be subject to the standard terms & conditions governing terminations (see 'Termination Policy'). In addition, certain visa types may disallow changes to course type and length. Please ask the school for more information at the time of booking.

### 15. Expulsion/Suspension

Any student who commits a criminal offence, violates the LSI Code of Conduct or a school behavioural policy, has a poor attendance record (based on the school's attendance policy, whether or not such attendance is in breach of any visa attendance requirements), is absent for 10 consecutive days without notification (USA), or fails to pay an amount he



# LSI Terms and Conditions (Continued...)

or she is directly or indirectly liable to pay LSI, may be expelled, suspended or removed from the course, school and any accommodation provided. No refund will be given and the immigration authorities will be informed.

## 16. Liability

The liability of LSI, its group companies, their directors, officers, employees, affiliates, Educational Tour Operators with respect to losses arising from negligence (except where such liability cannot be excluded as a matter of law), breach of contract or otherwise, will be limited in all circumstances to the full amount paid to LSI or the relevant LSI group company by the relevant student for the particular programme. Such companies and persons will in no circumstances have any liability for indirect or consequential losses or damages.

## 17. Force majeure

LSI will not be liable in cases where LSI is unable to fulfil any services to which they are contractually bound because of fire, natural disaster, act of government, failure of suppliers or subcontractors, labour disputes or other reasons which are beyond LSI's control.

## 18. Codes of practice

LSI has agreed to observe and be bound by the Code of Practice for the Pastoral Care of International Students as administered by our various local accrediting agencies. UK: British Council & ISI Private Further Education, USA: ACCET, Canada: Languages Canada, Australia: the Australian National Code of Practice 2007 and the Educational Services for Overseas Students Act 2000 (ESOS Act 2000) (information on which can be found at [www.aei.gov.au](http://www.aei.gov.au)), France: Qualité FLE, Switzerland: EAQUALS, New Zealand: NZQA. We strongly recommend all LSI NZ students to check NZQA's website [www.nzqa.govt.nz](http://www.nzqa.govt.nz) before booking. By agreeing to our Terms & Conditions upon enrolment, LSI NZ students are confirming that they have been made aware of information found on this website.

## 19. LSI Student Code of Conduct

Students must agree to abide by LSI's Student Code of Conduct and other policies while attending LSI. Inappropriate conduct includes but is not limited to: (1) disruptions to the learning environment, including the classroom and online, (i.e. use of profanity, harassment, mobile phone use in classrooms, etc); (2) deliberate destruction, misuse, or theft of LSI property or the property of fellow classmates; (3) violence or threats of violence towards persons or property of students or LSI staff; (4) improper use of email or Internet access and (5) failure to comply with local copyright or criminal laws forbidding the misappropriation, copying or alteration of copyright-protected materials. Further details of LSI's Code of Conduct can be found at [www.lsi.edu/code](http://www.lsi.edu/code)

**Damage to property:** LSI reserves the right to charge students who engage in vandalism, graffiti or criminal damage of any kind for the repair/replacement cost of any damage they cause. LSI also reserves the right to charge students responsible for damage caused to LSI property or 3rd party property by accident.

## 20. Student Visa UK, USA, Canada, New Zealand & Australia

At all LSI schools full attendance is expected. Student visa holders are required to provide LSI with a current residential address and telephone number at all times, maintain satisfactory academic progress and maintain satisfactory attendance, (subject to the school's own attendance policy). Students who fail to show up for their enrolment or do not maintain satisfactory attendance will be reported to the Department of Immigration and Citizenship (DIAC) in Australia, The Border Agency in the UK, Department of Homeland Security (DHS) in the USA, Citizenship and Immigration Canada (CIC) in Canada, or to New Zealand Immigration Services. In the UK, for students on Tier 4 visas, if 10 contact days are missed consecutively the student will be reported to the UK Border Agency. Information collected by LSI which personally identifies a student and information regarding a student's course progress may be shared with the Australian State and Federal or British government, Department of Homeland Security, state and accrediting agencies (USA), designated authorities, the Tuition Protection Service (Australia), students' parents, LSI staff and Educational Tour Operators. This information may include personal and contact details, course enrolment details and changes, and circumstances of any suspected breach by the student of any visa condition.

## 21. Prices

LSI has the right to change prices due to tax increases, governmental actions or other events beyond LSI's control. Prices listed for third party suppliers, including residence accommodation, are subject to change. If third party suppliers increase their prices after LSI has listed its annual prices, LSI reserves the right to pass on these increases to students. New Zealand: All fees, except homestay fees, are subject to a 15% government tax (GST). Should this be increased, our fees will increase accordingly.

## 22. Fees outstanding

Tuition fees include lessons, orientation meeting, use of computer room and internet in school, placement and progress testing, E-LSI online learning system, and a LSI certificate on completion of the course. LSI reserves the right to withhold the granting of a certificate attained by a student if tuition fees or any other fees remain outstanding, or other conditions are not met.

## 23. Photography, Filming and Sound Recording

LSI or the Educational Tour Operator may arrange to photograph or shoot video footage of students or use their written feedback for promotional purposes, both printed and online.

**UK, France, Switzerland:** students (and their parent/guardian if under 18 will be asked to give consent before any specific photography, filming or recording to agree to their participation. Withdrawal of consent can be made at any time by emailing [info@lsi.edu](mailto:info@lsi.edu)

**Rest of World:** Any student who does not wish to participate should advise us at the time of booking and state at the time of the photographing or video shooting the wish not to participate. By accepting these terms and conditions the student (and their parent/guardian if under 18) gives consent to the use of these photographs or video footage without further consent or notification.

## 24. Online Learning

Online classes may be recording for training and quality assurance purposes. Changes to or cancellations of on-line lessons must give at least 36 hours notice. Cancellations made after this time will result in a lost class.

## REFUND POLICY

### 1. Service Charges

Unless otherwise stated, enrolment fees are non-refundable. All other service charges having already been incurred by LSI, including but not limited to, courier fee, accommodation placement fee/deposit and medical insurance, will not be refunded (up to a maximum charge of US\$250 for LSI schools in California and US\$500 in other LSI USA schools).

### 2. Visa denials

On written notification of a visa rejection and receipt of relevant supporting documentation, 100% of fees will be refunded less enrolment fee, accommodation placement and all other (utilised) service charges. In all cases where a visa or visa support documentation has been issued, the relevant immigration authorities will be informed.

**Australia:** In Brisbane, in accordance with the Education Services for Overseas Students Act 2000, all course fees (tuition and non-tuition) will be refunded minus the lesser of the two following amounts a) 5% of the course fees received by LSI b) AU\$500.

### 3. Cancellation before the course start date

All cancellations must be in writing and sent by e-mail or post. The date of arrival at LSI of the email or of the letter determines the period of notice to be applied. Cancellations in the US may be made verbally.

#### 3(a), Tuition

**UK, Australia, France & Switzerland:** For cancellations made 31 days or more prior to the course start date, all tuition fees are refunded. For cancellations made 1-30 days prior to the course start date, 2 weeks tuition fees are charged.

**New Zealand:** (in accordance with the NZQA and LSI refund policy). For cancellations made prior to the course start date, all tuition fees are refunded.

**USA: California** For cancellations made prior to or on the course start date, all tuition fees are refunded minus US\$250 in non-refundable enrolment/service (non-tuition).

**Massachusetts and New York** LSI will retain cancellation fees equivalent to 4 weeks' worth of RRP tuition fees as listed on our website.

**I-20 transfers** - LSI cannot transfer students' I-20s to other institutions without having formally enrolled students at the school - i.e. without the student having started the first week of their programme. Students who do not arrive to start their course will have their I-20s cancelled.

**Canada (Toronto):** For cancellations made less than 7 days after the contract is made, 75% of all tuition fees are refunded (maximum \$400 retained by LSI). For cancellations or dismissals from the program 30 days or more before the start of the course, 75% of all tuition fees are refunded. For cancellations or dismissals less than 30 days before the start of the course, 60% of all tuition fees are refunded.

**Canada (Vancouver):** For cancellations made less than 7 days after the contract is made, 95% of all tuition fees are refunded (maximum \$250 retained by LSI). For cancellations or dismissals from the program 30 days or more before the start of the course, 90% of all tuition fees are refunded. For cancellations or dismissals less than 30 days before the start of the course, 80% of all tuition fees are refunded.

#### 3(b), Accommodation

##### UK, Canada, New Zealand, Australia, France & Switzerland:

For cancellations made 14 days or more prior to the course start date, all accommodation fees are refunded, less any penalties incurred by LSI from 3rd party suppliers. For cancellations made 1-13 days prior to the course start date there is a charge of either 2 weeks accommodation fees or any penalties incurred by LSI from 3rd party suppliers (whichever is the greater sum).

**USA:** For cancellations made 30 days or more prior to the course start date, 100% of the accommodation fees will be refunded, less any actual housing costs incurred by LSI, including penalties from 3rd party suppliers. If less than 30 days' notice is provided for a cancellation, there is a charge of either 2 weeks accommodation fees or any penalties incurred by LSI from 3rd party suppliers (whichever is the greater sum).

### 4. Termination Policy – Cancellation after the course has started

'Termination' means stopping or leaving all or part of the course or courses booked, including extensions, once the first course has started. When determining the number of weeks completed, outside of California, a partial week will be counted as a whole week, provided the student was present at least one day during the scheduled week. In California, tuition fees for partial weeks are accounted for pro rata. Discounted tuition and accommodation packages used by the student will be charged at the recommended retail price, as listed on our website, when any refund is calculated. In all cases additional service charges (airport transfers, courier fees, enrolment fees, insurance, accommodation placement fee, programme supplement fee, etc.) are non-refundable and written notification of termination must be given to the school Principal or Director (In the US, notification of termination may be verbal.) Students who terminate their programme may not be eligible to receive a LSI certificate and will not be allowed to stay in LSI accommodation.

#### 4(a), Tuition

**UK, Australia, France & Switzerland:** No refunds will be made for tuition. Tuition fees are non-transferable to other students. Tuition fees paid cannot be converted to alternate courses.

**USA:** If the student terminates after having completed more than 60% of the program in California or 50% in New York and Massachusetts, there is no refund. In all other cases, unused tuition fees are refundable. Unused tuition fees are calculated as follows: the amount owed equals the daily charge for the program (total institutional charge, divided by the number of days or hours in the program), multiplied by the number of days student attended, or was scheduled to attend, prior to withdrawal. The value of tuition taught is based on RRP prices as listed on our website. For terminations, I-20s will be cancelled immediately. Students wishing to transfer their I-20s to other institutions should check with their LSI school for conditions. Extensions are treated as new programmes and are subject to standard termination fees.

**California** Tuition fees for unused classes are refunded minus US\$250 in non-refundable enrolment/service (non-tuition). Please note, in California a student may cancel a programme (as opposed to terminate a programme) either on the first day of class or the 7th day after the enrolment agreement is signed, whichever is later.

**Massachusetts and New York** For students whose last day of attendance occurs at any point in the first four weeks of their initial period of financial obligation, the institution will retain the charges applicable to the first four weeks. For students whose last date of attendance occurs after the first four weeks but before or at the mid-point of their period of financial obligation, the institution may retain a prorated amount of tuition. For students whose last date of attendance occurs after the midpoint, the institution will retain all of the charges for that period.

**Canada (Toronto):** Students wishing to terminate must give 4 weeks' notice to the School Director. The refund will be calculated as follows according to the percentage of the course completed including the notice period: 0-10% of the programme has been completed: 50% refund of unused tuition fees, 11-29% of the programme has been completed: 30% refund of unused tuition fees, 30% or more of the programme has been completed: 0% refund of unused tuition fees.

**Canada (Vancouver):** Students can withdraw at any time without advanced notification. The refund will be calculated as follows according to the percentage of the course completed including the notice period: 0-10% of the programme has been completed: 70% refund of unused tuition fees, 11-29% of the programme has been completed: 50% refund of unused tuition fees, 30% or more of the programme has been completed: 0% refund of unused tuition fees.

#### 4(b), Accommodation

**UK, USA, Canada, Australia, Switzerland & France:** Students must give 4 weeks' notice in writing to the School. A refund will be made of the unused accommodation fee less the applicable notice period and the applicable change fee. Penalties incurred by LSI from 3rd party suppliers as a result of accommodation terminations will be charged to the student (if in excess of any fees held from the notice period). For terminations made after 50% of the booking has been completed, no refund will be given in the UK.

#### 5. New Zealand Termination Policy:

LSI NZ provides Termination refunds based on the package price (tuition, accommodation & all other service charges). For courses of 3 months or longer, students withdrawing within the first 10 working days of the course must be refunded in full less a deduction for costs incurred by LSI, up to a maximum of 25% of the fee total paid. LSI will provide the student with details of the cost components for the purpose of working out the maximum deductible percentage. In the event of a dispute over the cost component deducted, the student can contact Student Complaints by phone on 0800 00 66 75 or visit the iStudent Complaints website: [www.fairwaysolution.com/istudent-complaints](http://www.fairwaysolution.com/istudent-complaints). (For Domestic Students: for courses of 3 months or longer, withdrawals made within the first 8 calendar days of the course will be refunded in full less a deduction of 10% or \$500 payable to LSI, whichever is the lower amount).

Where a foreign student enrolled on a course of study that is less than three months' duration withdraws from such a course, the following minimum refund entitlement will apply:

a) For courses of up to and including four weeks and six days: where a student withdraws within the first two days of the course LSI will retain 50% of the full amount and refund the balance to the student. b) For courses of five weeks or more but less than three months: where a student withdraws within the first five days of the course LSI will retain 25% of the full amount and refund the balance to the student. Otherwise there are no refunds.

#### 6. Method of Refund Payments

Refunds will be made via the Educational Tour Operator to whom the fees were originally paid, or via the same payment method and destination from which the fees were originally paid. For a calculation of fees refundable, please see above. With the exception of students studying in California, refunds made via an Educational Tour Operator are subject to the Educational Tour Operator's own cancellation refund policies. All refunds will be made within 45 days of written notification unless otherwise stated.

**Australia:** Refunds will be paid within 14 working days of written notification. In accordance with sections 27-31 of ESOS Act 2000, providing the student has not withdrawn before the default day, LSI will pay a full refund to the student within 14 days if the course being offered does not commence on the agreed starting day or the course stops being provided at any time after it starts and before it is completed. This agreement and the availability of the complaints and appeals process does not prevent the student from taking action under Australia's customer protection laws.

**New Zealand:** LSI NZ is a booking, placing, and collection agent for Homestay (HB & B&B) and Hostel Accommodation. Any accommodation refunds will be made to the student on completion of the course if the student has given 2 weeks' notice in writing.

## LEGALLY BINDING

The LSI Enrolment Agreement is legally binding when signed by the student and/or the student's legal guardian, and is accepted by LSI.

## SUBJECT TO CHANGE

These Terms and Conditions may differ according to any changes in policy made by the accrediting body or government where the school is located. You will be notified at the time of booking of any such amendments. Any dispute, claim or other matter arising will be subject to the current laws in the destination country.

All prices & dates in this brochure are correct at the time of printing, but are subject to change.

## Student Information

Family name:  
(as it appears in the passport)

First name(s):  
(as it appears in the passport)  Male  Female

Date of birth (D/M/Y):

Country of birth: City of birth (required for US I-20):

Nationality/Citizenship:

Mother tongue:

Occupation:

Full address:

City: Postcode:

Passport number:

Country:

Student email (required for e-learning registration):

Telephone (home): Telephone (mobile):

### Students under 18 years of age (19 in Vancouver):

Name and surname of legal guardian:

Telephone number of legal guardian:

Email of legal guardian:

Permanent address of legal guardian:

City: Postcode:

## LSI Representative Information

Partner name/contact person:

Country:

Email:

Telephone:

For all partner bookings, please confirm who will be responsible for the total payment of this booking by selecting an option below:

Partner  Partner and Student (please give details including amounts):  Student

Partner signature:

## Course Information

School name and location:

Course name\*: Lessons/week:

Number of weeks: Start date (DD/MM/YY):

Language level: Type of visa sought:

\* Please check the relevant school page and make sure your chosen course is offered at the school you have selected. For multi-centre courses please contact the LSI booking office.

## Course Fees

Registration:	Tuition:	Housing:
Sundries:	Total charges for the course:	

(Tuition includes all equipment, supplies, learning materials (print & digital), internal LSI assessments. Course payments are subject to LSI T&Cs. See previous pages.)

**Please return the completed form to the LSI booking office or to your local representative.**

## Accommodation

Accommodation type: <input type="checkbox"/> Homestay <input type="checkbox"/> Residence <input type="checkbox"/> Apartment <input type="checkbox"/> Hotel <input type="checkbox"/> I will arrange my own	Room type: <input type="checkbox"/> Single <input type="checkbox"/> Twin (2 beds)* <input type="checkbox"/> Double (1 bed)*	Meals per week: (if different options are advertised) <input type="checkbox"/> B&B <input type="checkbox"/> Full-board <input type="checkbox"/> Half-board
Homestay Supplements: (Only where advertised. Extra charges apply) <input type="checkbox"/> Private bathroom/Executive† <input type="checkbox"/> Close to school supplement (London and New York)†		Zone: (If applicable)
Accommodation name: (if known)		
Check-in date (D/M/Y):	Check-out date (D/M/Y):	
Do you have any special requests? (e.g. medical requirements, allergies, special diet, no cats/dogs) <input type="checkbox"/> Yes <input type="checkbox"/> No	If yes, please specify:	Do you smoke? <input type="checkbox"/> Yes <input type="checkbox"/> No

Other accommodation supplements may apply, including seasonal supplements during the summer or at Christmas. See price list or contact the school for details.

\* 2 students booking together † Subject to availability. Please check before booking.

## Additional Services

Would you like LSI to organise insurance?  
 Yes  No If not, you will need to organise your own medical insurance.

If you are travelling to Australia, would you like Overseas Student Health Cover? (Mandatory for student visa)  
 Yes  No

Would you like an airport transfer? (If yes, please send us your flight details) On arrival:  Yes  No On departure:  Yes  No

Would you like to receive your course confirmation/visa application documents by courier (express) mail for an additional fee?  
 Yes  No

I would also like to book the following services:  
(Not available in all destinations. Additional fees may apply. Please check the relevant school page)  
 Internship Placement  University Pathway

## Payment

At this time, I wish to pay:  the enrolment fee  the full fees

**Method of Payment:**

I wish to pay by credit card. (Please pay online at [www.lsi.edu](http://www.lsi.edu) or contact LSI to arrange payment)

I enclose a cheque made payable to Language Studies International (LSI). (Not available at LSI Zurich)  
Cheque amount:

I would like to pay via bank transfer. Please send me transfer details.

I am sponsored by:

## Medical and Psychological Conditions

Do you have a disability, impairment or long-term medical or psychological condition which may affect your studies?  
 Yes  No If yes, please provide further information. Please see our Terms and Conditions/Health Declaration.

## Declaration

I authorise any licensed hospital or physician to initiate medical treatment for myself in case of medical emergency or for my child if he/she is under 18 years of age (19 in Vancouver).

I confirm that I have read, understood and agree to be bound by LSI's Terms and Conditions ([www.lsi.edu/terms](http://www.lsi.edu/terms)).

In order for you or your child to study with us, LSI processes your data and/or that of your child. How and why we do this, and your rights over this data, are in our Privacy Statement.

I have read, understand and consent to LSI processing the data as described in our Privacy Statement ([www.lsi.edu/privacy](http://www.lsi.edu/privacy))

Student Signature: Date:

Signature of parent/guardian\*: Date:

\* Required if student is under 18 years old or 19 years old in Vancouver

Special Promotion Code: