



LSI College Experiences

Introduction

Our Academic Experiences are for young learners aged 16-18 looking to expand their understanding of various areas of interest and prepare for their university studies. Whether you choose our Future Leaders, Artistic Visionaries, World Explorers, The Scientists Programme, or the flexible Build Your Own Experience, each half-term or term-long programme allows you to participate in A Level and University Foundation classes tailored to your interests.

Choose Your Experience

- ✓ Future Leaders
- ✓ World Explorers
- ✓ Artistic Visionaries
- ✓ The Scientists
- ✓ Build Your Own Experience

Experience Culture

These programmes not only enhance your academic skills but also broaden your cultural horizons, preparing you for future educational pursuits in the UK or internationally.

A New Path

Join us at LSI Independent College and embark on a path to academic excellence and unforgettable adventures!





Future Leaders

The Future Leaders Programme at LSI Independent College is tailored for ambitious students aiming to emerge as influential leaders in their fields. It features a robust curriculum emphasizing critical leadership skills such as strategic planning, effective communication, and ethical decision-making.

Subjects (Choose Three)

- ✓ Business
- ✓ Economics
- ✓ Mathematics
- ✓ Computer Science
- ✓ Psychology
- ✓ English for Academic Purposes*

Package Includes

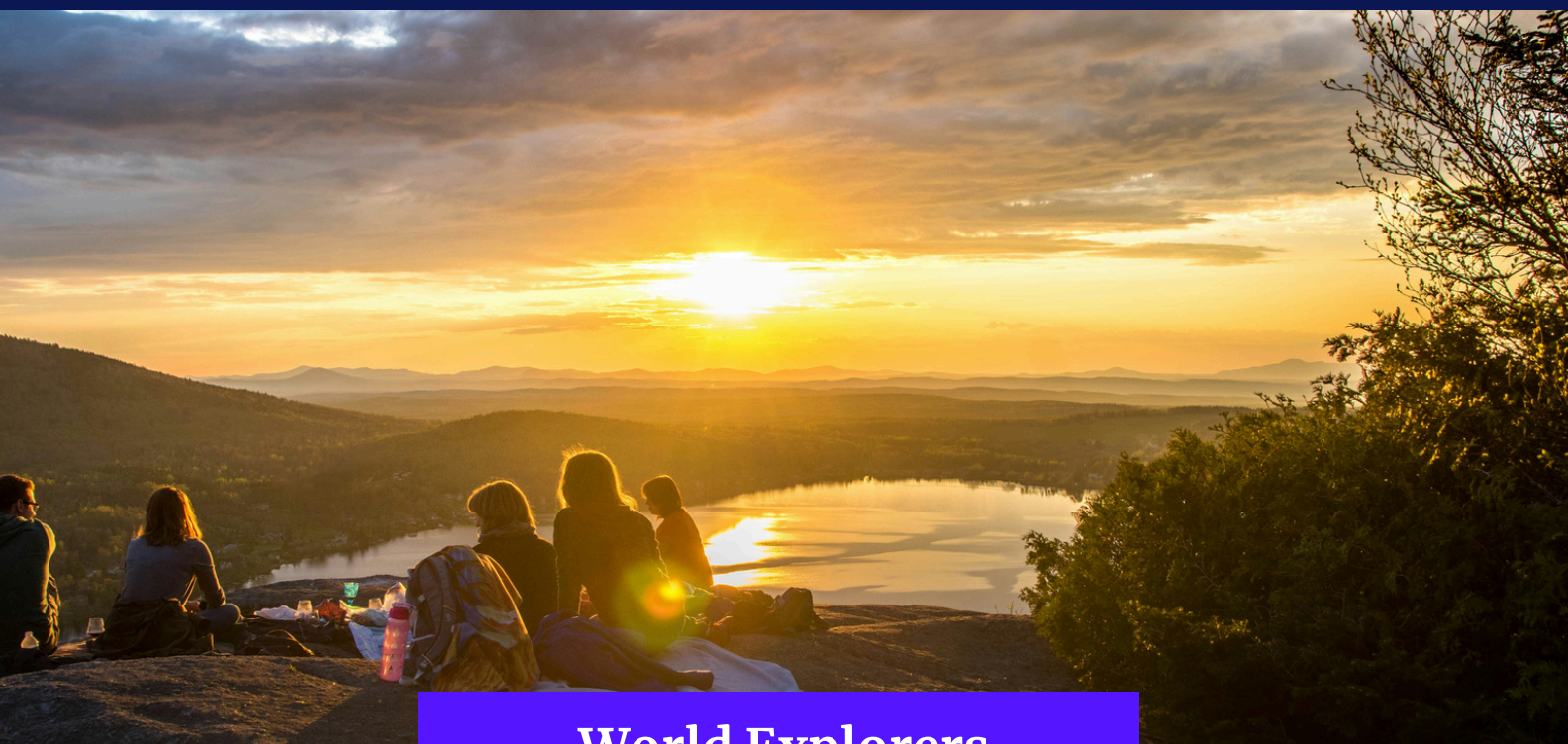
- Homestay Accommodation in Single Room with Half Board
- Extra-Curricular Activities
- Airport Transfer (One-Way Heathrow)
- Material
- Completion Certificate

For students aged 16-18

English level requirement: B1 Intermediate (IELTS 4.5)

*Please see the **Package Fees and Dates** page for more information.*

**For students who don't yet have a B2 English level or would like to prepare themselves to take a Cambridge Exam, we recommend choosing English for Academic Purposes as one of the three subjects.*



World Explorers

The World Explorers Programme at LSI Independent College caters to curious students eager to understand the world through academic study, cultural immersion, and experiential learning. It aims to expand students' intellectual horizons. The accompanying Holistic Growth Program prepares students to become influential global citizens capable of tackling major life decisions.

Subjects (Choose Three)

- ✓ History
- ✓ Business
- ✓ Politics
- ✓ Psychology
- ✓ Computer Science
- ✓ English for Academic Purposes*

Package Includes

- Homestay Accommodation in Single Room with Half Board
- Extra-Curricular Activities
- Airport Transfer (One-Way Heathrow)
- Material
- Completion Certificate

For students aged 16-18

English level requirement: B1 Intermediate (IELTS 4.5)

*Please see the **Package Fees and Dates** page for more information.*

**For students who don't yet have a B2 English level or would like to prepare themselves to take a Cambridge Exam, we recommend choosing English for Academic Purposes as one of the three subjects.*



Artistic Visionaries

The Artistic Visionaries Programme at LSI Independent College is designed for creatively driven students aiming to excel in the arts. It blends theory and practice in visual arts and creative writing. With small, engaging classes and personalized attention, this programme sharpens academic skills and broadens cultural horizons, preparing students for future educational adventures.

Subjects (Choose Three)

- ✓ Art
- ✓ English Literature
- ✓ Computer Science
- ✓ Psychology
- ✓ Chemistry
- ✓ English for Academic Purposes*

Package Includes

- Homestay Accommodation in Single Room with Half Board
- Extra-Curricular Activities
- Airport Transfer (One-Way Heathrow)
- Material
- Completion Certificate

For students aged 16-18

English level requirement: B1 Intermediate (IELTS 4.5)

*Please see the **Package Fees and Dates** page for more information.*

**For students who don't yet have a B2 English level or would like to prepare themselves to take a Cambridge Exam, we recommend choosing English for Academic Purposes as one of the three subjects.*



The Scientists

The Scientists Programme at LSI Independent College is for students passionate about scientific inquiry and research. Enhanced with hands-on experiments and field trips, and supported by personalized guidance and small classes, this programme prepares students to tackle complex scientific challenges and achieve future educational success.

Subjects (Choose Three)

- ✓ Biology
- ✓ Chemistry
- ✓ Physics
- ✓ Computer Science
- ✓ English for Academic Purposes*

Package Includes

- Homestay Accommodation in Single Room with Half Board
- Extra-Curricular Activities
- Airport Transfer (One-Way Heathrow)
- Material
- Completion Certificate

For students aged 16-18

English level requirement: B1 Intermediate (IELTS 4.5)

*Please see the **Package Fees and Dates** page for more information.*

**For students who don't yet have a B2 English level or would like to prepare themselves to take a Cambridge Exam, we recommend choosing English for Academic Purposes as one of the three subjects.*



Build Your Own Experience

The Build Your Own Experience Programme at LSI Independent College allows students to customize their education by selecting 3 subjects from A Level and foundation classes. This flexible programme offers personalized attention in small, engaging sessions, enabling students to tailor their learning to their interests and career aspirations.

Subjects (Choose Three)

- | | |
|----------------------------------|----------------------|
| ✓ Business | ✓ History |
| ✓ Economics | ✓ Physics |
| ✓ Mathematics | ✓ Chemistry |
| ✓ Computer Science | ✓ English Literature |
| ✓ Psychology | ✓ Biology |
| ✓ English for Academic Purposes* | ✓ Art |

For students aged 16-18

English level requirement: B1 Intermediate (IELTS 4.5)

*Please see the **Package Fees and Dates** page for more information.*

**For students who don't yet have a B2 English level or would like to prepare themselves to take a Cambridge Exam, we recommend choosing English for Academic Purposes as one of the three subjects.*

Package Includes Everything Covered in Other Experiences

Pricing Fees and Dates

Half Term Programmes	
Half Term - Spring & Autumn (6 weeks)	£5,812.50
Half Term - Autumn (7 weeks)	£6,092.50
One Term Programmes	
Autumn Term (13 weeks study + 1 week break)	£12,035.00
Spring Term (12 weeks study + 1 week break)	£11,755.00
Summer Term (8 weeks)	£10,355.00

Registration Fee: £250

Dates:

Half Terms:

- 6 weeks from Tuesday 17 September to Friday 25 October 2024
- 7 weeks from Monday 4 November to Friday 20 December 2024
- 6 weeks from Monday 6 January to Friday 14 February 2025
- 6 weeks from Monday 24 February to Friday 4 April 2025

Full Terms:

- 14 weeks (13 weeks study + 1 week break) from:
 - Tuesday 17 September to Friday 25 October 2024 (6 weeks)
 - Half term Break, 28 October – 1 November 2024 (1 week)
 - Monday 4 November to Friday 20 December 2024 (7 weeks)
- 13 weeks (12 weeks study + 1 week break) from:
 - Monday 6 January to Friday 14 February 2025 (6 weeks)
 - Half term Break: 17 – 21 February 2025 (1 week)
 - Monday 24 February to Friday 4 April 2025 (6 weeks)
- 8 weeks from Monday 28 April to Friday 20 June 2025



Join Us for Your Experience

English Lessons

Students have the option to take English lessons, ensuring they enhance their language skills and maximise their learning experience.

Extra-Curricular

Beyond the classroom, students will have the opportunity to attend a wide range of clubs and activities, such as debate club, theatre productions, robotics club, and various sports including football, tennis, and swimming. Additionally, you'll enjoy fun trips and exciting London activities, immersing yourself in the vibrant culture and history of one of the world's most dynamic cities.



Certificate of Completion

By the end of all programmes, students will earn a certificate and participate in an end-of-term ceremony. The certificate will be issued by LSI Independent College, which is rated outstanding for student behaviour by Ofsted. There is also an opportunity for students to earn a Cambridge certificate if they attend the test prior to the end of the programme.

Contact

admissions@lsi.edu



Introducing LSI College

Happy teachers, happy students, happy agents.

Located in Hampstead, London, LSI Independent College offers a welcoming environment where students can enroll in high-quality, fully accredited A-level and university preparation programs. We help students from around the globe gain admission to the UK's leading universities. At LSI, our commitment is to support each student's academic and personal growth, ensuring they reach their fullest potential.

Location

Located in North London, our modern, fully equipped facility is housed in a spacious Victorian building, just 12 minutes by tube from central London. Nestled in Hampstead, a charming historic neighborhood known for its renowned residents, world-class dining, shopping, and entertainment, it offers a quiet, safe retreat at night.

Accreditation and Affiliations, Membership

LSI Independent College is Ofsted-inspected and registered as an exam center for all major boards. It is also a UKVI sponsor and a member of CIFE.



Student Testimonials

"The leadership and education at LSI College is fantastic. They really pushed me to do my best and as a result, I got into the University of my choice! Teachers Séan and Michael are in particular really great, and I highly recommend them and the institution that they work within."

— Zack, Former Student

Discover our other Academic Programmes at LSI Independent College

Located in Hampstead, London, LSI Independent College offers a welcoming environment where students can enroll in high-quality, fully accredited A-level and university preparation programs. We help students from around the globe gain admission to the UK's leading universities. At LSI, our commitment is to support each student's academic and personal growth, ensuring they reach their fullest potential.

PRE A LEVEL	<ul style="list-style-type: none"> • Focus on IGCSE modules • English language support
A LEVEL	<p>Subjects offered: Mathematics, Economics, History, Politics, Biology, Chemistry, Physics, Spanish, Psychology, Business, Further Mathematics, Art, Computer Science, English Literature, and Geography.</p> <p>First Year In their first year of A Level studies, students at LSI Independent College select three A Level subjects, each with five hours of instructional time per week. This rigorous academic schedule is designed to provide a deep understanding of their chosen subjects, preparing them for further education and their future careers.</p> <p>Core Components:</p> <ul style="list-style-type: none"> • A Level Subjects: Each student selects three subjects, with 4-5 hours of lessons per subject per week. • English Support: International students receive additional English lessons, ranging from 3 to 5 hours per week, based on their proficiency level. <p>Second Year In their second year of A Level studies, students continue to follow the same timetable structure as in Year One, with the addition of career lessons once a week. These career lessons are designed to help students gain a better understanding of their future plans and options, ensuring they are well-prepared for higher education and their chosen career paths.</p> <p>Core Components:</p> <ul style="list-style-type: none"> • A Level Subjects: Each student continues with their three chosen subjects, with 4-5 hours of lessons per subject per week. • English Support: International students receive additional English lessons, ranging from 3 to 5 hours per week, based on their proficiency level. • Personal, Social, Health, and Economic Education (PSHE): All students participate in 1 hour of PSHE per week.

Continued on next page

INTENSIVE A LEVEL	<p>The Intensive A Level programme at LSI Independent College is designed for students who have completed Year 2 but wish to improve their grades by repeating their studies. This programme allows students to retake 1 to 3 subjects, with a focus on intensive learning and support.</p> <p>Core Components:</p> <ul style="list-style-type: none"> Subjects: Students can choose between 1 and 3 subjects, with 6 hours dedicated to each subject per week. Careers Lessons: Students must attend careers lessons once a week to explore future career options and develop professional skills, similar to the Year 2 A Level programme.
UNIVERSITY FOUNDATION PROGRAMME	<p>Our University Foundation Programme (UFP) offers an accelerated path to 1000s of university programmes including many within Russell Group Universities and other leading institutions.</p> <p>Eligibility Criteria:</p> <ul style="list-style-type: none"> Age: 17 years old by the 31st December in the year that you start the IFY English Language Level: IELTS 5.0 level or equivalent prior to entry Length: 3 terms (Autumn, Spring & Summer) Application Deadline: Late August Academic Entry Requirements: Completion of 12 years of high school education with pass grades (or equivalent to meet the same standard). <p>Pathways</p> <ul style="list-style-type: none"> International Foundation Year in Management and Finance International Foundation Year in Art and Design International Foundation Year in Humanities and Social Science International Foundation Year in Engineering International Foundation Year in Science <p>To learn about University progression pathways and fees, click here.</p>



Student Support Services

LSI College offers academic advising, counseling services, additional English language support for international students, and career guidance including university application assistance.

Curriculum & Teaching

The curriculum and teaching approach features experienced and qualified faculty, modern teaching methodologies, an interactive and engaging classroom environment, and the use of technology including interactive boards.

Experienced Faculty



Dr. Iman Hami
Principal



Lyndsey Hayes
Psychology Teacher



Richard Clark
Mathematics Teacher



Michael McNamara
Business, Economics &
History Teacher



Kate Klinger
Art Teacher



Dr. Michael McGrath
Politics' & History Teacher



Dr. Jan Capar
Chemistry Teacher



Stella Christofi
English Literature &
English Language Teacher



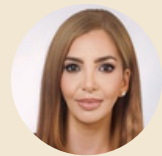
Peter Nobar
Mathematics, Physics &
Computer Science Teacher



Heather Price
Art Teacher



Denis Plum
Biology Teacher



Eda Cinar
Registrar

With over 60% of our teaching staff having been with us since day one, LSI College boasts a wealth of experience and expertise. This longevity not only speaks to the dedication of our educators but also ensures a continuity of excellence in teaching and mentorship, setting us apart from the competition.

Student Success Stories

We take pride in our strong alumni network, which consistently achieves high academic success.

Destinations

51% of our students go on to
Russell Group Universities

16% of our students go on to
G5 Universities

Outstanding Results

48% A*-A

68% A*-B



"My experience has been good! There are nice small class sizes so you get lots of focused attention which is really good. If you're considering LSI College, be prepared for a very studious lifestyle and it's right for you if you're really serious about getting good grades."

— Chloe, Current Student



Extracurricular Activities

Extracurricular activities encompass a range of clubs and societies such as Art, MUN, Medics, Maths, English for Academic Purposes, and Free Discussion, along with sports and physical education, as well as cultural events and excursions.

Accommodation & Guardianship

Located in the beautiful and quaint borough of Hampstead, LSI College provides a unique accommodation solution for accommodation and works with AEGIS and British Council accredited partner, UK Guardians for guardianship.

Assessment and Feedback

Assessment and feedback include regular assessments and feedback mechanisms, student surveys and feedback forms, and continuous improvement processes based on feedback.

Student Well-being

At LSI College, we prioritize students' overall growth and well-being through exceptional support, led by our Head of Years and Directors of Study. Weekly PSHE lessons, regular one-on-one academic progress sessions, and half-term reflective meetings help build life skills, resilience, empathy, and personal goals, fostering confident and well-rounded individuals ready for success.

Admissions Process

Prospective students are encouraged to visit our campus to meet staff and students, and schedule an interview with our Principal to discuss academic options and A-level subjects. If you wish to apply, complete the application form; we will then request references and transcripts from your current school, and admission decisions will be based on the interview, your academic scores, and school references. To learn about admissions requirements for specific programmes, please contact us.

Fees and Term Dates for all Programmes

To see LSI College's fees and term dates, please click here.

Contact LSI College

admissions@lsi.edu

+44 (0)207 794 8111

