





# A Level Year One

In their first year of A Level studies, students at LSI Independent College select three A Level subjects, each with five hours of instructional time per week. This rigorous academic schedule is designed to provide a deep understanding of their chosen subjects, preparing them for further education and their future careers.

## Core Components:

- A Level Subjects: Each student selects three subjects, with 4-5 hours of lessons per subject per week.
- English Support: International students receive additional English lessons, ranging from 3 to 5 hours per week, based on their proficiency level.

Personal, Social, Health, and Economic Education (PSHE): All students participate in 1 hour of PSHE per week, focusing on personal development, health, and social responsibility.

# A Level Year One Weekly Timetable

Time	Monday	Tuesday	Wednesday	Thursday	Friday
09:00-10:00	Subject 1	Subject 2	Subject 3	Subject 1	Subject 2
10:00-11:00	Subject 1	Subject 2	Subject 3	Subject 1	Subject 2
11:00-11:15	Break	Break	Break	Break	Break
11:15-12:15	Subject 2	Subject 3	Subject 1	Subject 3	Subject 1
12:15-13:15	Subject 2	Subject 3	Subject 1	Subject 3	Subject 1
13:15-14:00	Lunch	Lunch	Lunch	Lunch	Lunch
14:00-15:00	Subject 3	Subject 1	English (Int'l Students)	Subject 2	Club Activities
15:00-16:00	Subject 3	Subject 1	English (Int'l Students)	Subject 2	Club Activities
16:00-16:15	Break	Break	Break	Break	Break
16:15-17:00	PSHE	English (Int'l Students)	Club Activities	Club Activities	Club Activities

# A Level Year One Notes

- Subject 1, Subject 2, Subject 3: Each student has chosen three A Level subjects, with 5 hours of instruction per subject per week.
- English (Int'l Students): Additional English lessons for international students, 3 to 5 hours per week based on proficiency.
- PSHE: 1 hour per week for all students.

Club Activities: Opportunities for students to join various clubs, including Art, MUN, Medics, Maths, EAP, and Free Discussion.



# What Our Students Say



*"My experience has been good! There are nice small class sizes so you get lots of focused attention which is really good. If you're considering LSI College, be prepared for a very studious lifestyle and it's right for you if you're really serious about getting good grades."*

**— Chloe, Current Student**

*"The leadership and education at LSI College is fantastic, they really pushed me to do my best and as a result, I got into the University of my choice! Teachers Séan and Michael are in particular really great, and I highly recommend them and the institution that they work within."*

**— Zack, Former Student**



# A Level Year Two

In their second year of A Level studies, students continue to follow the same timetable structure as in Year One, with the addition of career lessons once a week. These career lessons are designed to help students gain a better understanding of their future plans and options, ensuring they are well-prepared for higher education and their chosen career paths.

## Core Components:

- A Level Subjects: Each student continues with their three chosen subjects, with 4-5 hours of lessons per subject per week.
- English Support: International students receive additional English lessons, ranging from 3 to 5 hours per week, based on their proficiency level.
- Personal, Social, Health, and Economic Education (PSHE): All students participate in 1 hour of PSHE per week.

Career Lessons: 1 hour per week dedicated to exploring future career options, university applications, and professional skills development.



# A Level Year Two Weekly Timetable

Time	Monday	Tuesday	Wednesday	Thursday	Friday
09:00-10:00	Subject 1	Subject 2	Subject 3	Subject 1	Subject 2
10:00-11:00	Subject 1	Subject 2	Subject 3	Subject 1	Subject 2
11:00-11:15	Break	Break	Break	Break	Break
11:15-12:15	Subject 2	Subject 3	Subject 1	Subject 3	Subject 1
12:15-13:15	Subject 2	Subject 3	Subject 1	Subject 3	Subject 1
13:15-14:00	Lunch	Lunch	Lunch	Lunch	Lunch
14:00-15:00	Subject 3	Subject 1	English (Int'l Students)	Subject 2	Club Activities
15:00-16:00	Subject 3	Subject 1	English (Int'l Students)	Subject 2	Club Activities
16:00-16:15	Break	Break	Break	Break	Break
16:15-17:00	PSHE	Careers Lesson	Club Activities	Club Activities	Club Activities



# A Level Year Two Notes

- Subject 1, Subject 2, Subject 3: Continuation of the three chosen A Level subjects with 5 hours of instruction per subject per week.
- English (Int'l Students): Additional English lessons for international students, 3 to 5 hours per week based on proficiency.
- PSHE: 1 hour per week for all students.
- Careers Lesson: 1 hour per week dedicated to career planning and future options.
- Club Activities: Opportunities for students to join various clubs, including Art, MUN, Medics, Maths, EAP, and Free Discussion.

This timetable ensures that Year Two students have a balanced schedule that includes academic lessons, English support, personal development, career planning, and extracurricular activities, providing a comprehensive educational experience.



# Intensive A Level

The Intensive A Level programme at LSI Independent College is designed for students who have completed Year 2 but wish to improve their grades by repeating their studies. This programme allows students to retake 1 to 3 subjects, with a focus on intensive learning and support.

## Core Components:

- Subjects: Students can choose between 1 and 3 subjects, with 6 hours dedicated to each subject per week.
- Careers Lessons: Students must attend careers lessons once a week to explore future career options and develop professional skills, similar to the Year 2 A Level programme.

Extracurricular Activities: Students are encouraged to join a variety of clubs to strengthen their foundations, learn new skills, and develop their interests.

# Intensive A Level Weekly Timetable

Time	Monday	Tuesday	Wednesday	Thursday	Friday
09:00-10:00	Subject 1	Subject 2	Subject 3	Subject 1	Subject 2
10:00-11:00	Subject 1	Subject 2	Subject 3	Subject 1	Subject 2
11:00-11:15	Break	Break	Break	Break	Break
11:15-12:15	Subject 1	Subject 3	Subject 2	Subject 3	Subject 1
12:15-13:15	Subject 1	Subject 3	Subject 2	Subject 3	Subject 1
13:15-14:00	Lunch	Lunch	Lunch	Lunch	Lunch
14:00-15:00	Subject 2	Subject 1	Careers Lesson	Subject 2	Club Activities
15:00-16:00	Subject 2	Subject 1	Club Activities	Subject 2	Club Activities
16:00-16:15	Break	Break	Break	Break	Break
16:15-17:00	Subject 3	Careers Lesson	Club Activities	Club Activities	Club Activities



# Intensive A Level Notes

- Subject 1, Subject 2, Subject 3: Each chosen subject has 6 hours of instruction per week.
- Careers Lesson: 1 hour per week dedicated to career planning and future options.
- Club Activities: Opportunities to join various clubs for personal and academic development.

This timetable ensures that Intensive A Level students receive focused instruction in their chosen subjects while also benefiting from career guidance and extracurricular activities.

# What Sets LSI College Apart?

We are a small and friendly independent A Level college based in Hampstead, London. We offer a combination of the best-in-class focus on well-being, unrivaled experience, personalised attention, and a diverse and inclusive environment.

- **51% of our students go to Russell Group Universities**
- **16% of our students go to G5 Universities**
- **Average class sizes of 5**





# Team



Dr. Iman Hami  
Principal



Lyndsey Hayes  
Psychology Teacher



Richard Clark  
Mathematics Teacher



Michael McNamara  
Business, Economics &  
History Teacher



Kate Klinger  
Art Teacher



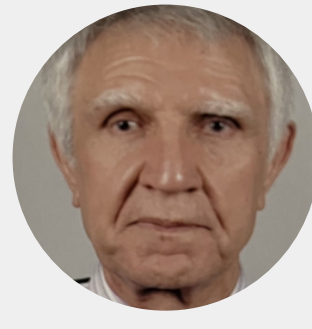
Dr. Michael McGrath  
Politics' & History Teacher



Dr. Jan Capar  
Chemistry Teacher



Stella Christofi  
English Literature &  
English Language Teacher



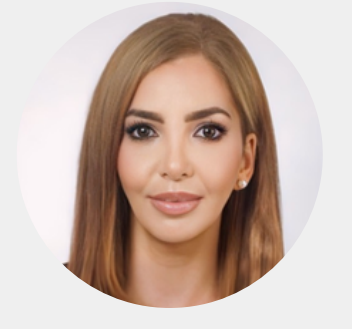
Peter Nobar  
Mathematics, Physics &  
Computer Science Teacher



Heather Price  
Art Teacher



Denis Plum  
Biology Teacher



Eda Cinar  
Registrar

**With over 60% of our teaching staff having been with us since day one,** LSI College boasts a wealth of experience and expertise. This longevity not only speaks to the dedication of our educators but also ensures a continuity of excellence in teaching and mentorship, setting us apart from the competition.



# University Foundation Programme (UFP)

The University Foundation Programme (UFP) is designed for students aged 16 and a half and above who have an IELTS score of 5.0 or equivalent. This programme prepares students for university by providing intensive academic and English language instruction. Upon meeting the requirements of our partner universities, students will have guaranteed progression to the university without the need for an additional English language certificate.

## Core Components:

- Subjects: Students will study 3 subjects, similar to A Level subjects, with 4 hours of instruction per subject per week.
- English for Academic Purposes (EAP): Intensive EAP instruction for 8 hours per week to enhance students' English proficiency and academic skills.



# University Foundation Programme (UFP)

## **Guaranteed University Progression:**

Students who meet the requirements of our partner universities will be guaranteed progression to the university without needing to present any additional English language certificate.

## **Course Pathways:**

You will study three academic modules depending on which degree you want to study at university. You will also study our English for Academic Purposes module which gives you the academic English language skills needed for university.

We have the following streams available:

- International Foundation Year in Engineering
- International Foundation Year in Science
- International Foundation Year in Management and Finance
- International Foundation Year in Art and Design
- International Foundation Year in Humanities and Social Science



# University Foundation Programme Weekly Timetable

Time	Monday	Tuesday	Wednesday	Thursday	Friday
09:00-10:00	Subject 1	Subject 2	Subject 3	Subject 1	EAP
10:00-11:00	Subject 1	Subject 2	Subject 3	Subject 1	EAP
11:00-11:15	Break	Break	Break	Break	Break
11:15-12:15	Subject 2	EAP	Subject 1	EAP	Subject 3
12:15-13:15	Subject 2	EAP	Subject 1	EAP	Subject 3
13:15-14:00	Lunch	Lunch	Lunch	Lunch	Lunch
14:00-15:00	Subject 3	Subject 1	EAP	Subject 2	Club Activities
15:00-16:00	Subject 3	Subject 1	EAP	Subject 2	Club Activities
16:00-16:15	Break	Break	Break	Break	Break
16:15-17:00	EAP	EAP	Club Activities	EAP	Club Activities

# University Foundation Programme (UFP) Notes

- Subject 1, Subject 2, Subject 3: Each chosen subject has 4 hours of instruction per week.
- EAP: 8 hours per week of English for Academic Purposes to enhance language skills.
- Club Activities: Opportunities to join various clubs for personal and academic development.

This timetable ensures that students in the University Foundation Programme receive comprehensive academic and language instruction, preparing them for successful progression to university.

## **Accommodation & Guardianship:**

LSI College provides a unique accommodation solution for accommodation and works with AEGIS and British Council-accredited partner, UK Guardians for guardianship.



# Guaranteed Entry to Thousands of University Degrees



Upon successful completion of the UFP programme, students are guaranteed a conditional place on a relevant undergraduate degree. **These include many within Russell Group Universities.**



# Extracurricular Opportunities

Students are encouraged to join various clubs and activities that enhance their academic experience. These extracurricular opportunities foster personal growth, leadership, and a sense of community, complementing their academic learning for a well-rounded future.

- Art Club: Explore creative expression and develop artistic skills.
- Model United Nations (MUN): Engage in global issues and develop diplomatic skills.
- Medics Club: Gain insights into medical careers and healthcare topics.
- Maths Club: Enhance mathematical understanding and problem-solving abilities.
- English for Academic Purposes (EAP): Improve academic English skills for non-native speakers.
- Free Discussion Club: Participate in open discussions on diverse topics, promoting critical thinking and communication.





## Contact

[www.lsi.college](http://www.lsi.college)

T. +44 (0)207 794 8111  
E. [admissions@lsi.edu](mailto:admissions@lsi.edu)

Heath House, 13 Lyndhurst Terrace  
London NW3 5QA