



LSI
Education



2026

EXECUTIVE ENGLISH 10

 *LSI Boston, LSI San Diego and LSI Berkeley*



COURSE DESCRIPTION

English is the global language of business. Mastering it with confidence in professional settings is essential for building a successful international career.

Our flexible, fast-paced course is designed to quickly elevate your business communication skills. Each week, you'll engage in a dynamic mix of written exercises and interactive activities, including interview simulations, presentations, mock negotiations, networking practice and business meetings.

These hands-on experiences will boost your fluency with essential business vocabulary and sharpen vital skills like writing professional emails, memos, and formal letters. You'll also strengthen your ability to negotiate, lead conversations, and speak confidently on the phone.

By the end of the program, you'll be able to communicate clearly and confidently in any professional environment.

The **Executive English 10** can be booked **independently** or in addition to our **morning General 20 lessons course**. Check the availability of these programmes with the school.



LESSON SCHEDULE



BOSTON

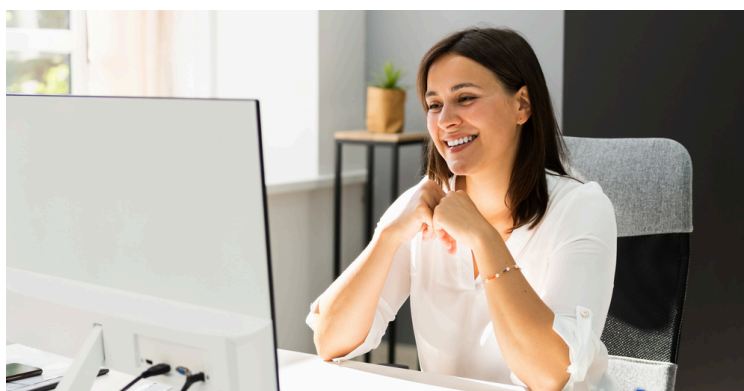
Lessons are Monday to Friday, from 1:30PM to 3:30PM.

SAN DIEGO

Lessons are Monday to Thursday, from 1:50PM to 4:05PM.

BERKELEY/SAN FRANCISCO

Lessons are Monday to Thursday, from 1:50PM to 4:05PM.



COURSE DETAILS

LESSONS:	MINIMUM LEVEL:	LENGTH:	START DATE:	CLASS SIZE:
10 afternoon lessons per wk (50 min each lesson)	B1 Intermediate (B2+ recommended)	1 - 4 weeks	1st Monday of each month	Maximum 5 students

SCHOOLS	SAN DIEGO (san@lsi.edu)	BERKELEY/SAN FRANCISCO (ber@lsi.edu)	BOSTON (bos@lsi.edu)	REG. FEE (only once)
FEES (PER WEEK)	US\$ 655	US\$ 655	US\$ 655	US\$ 185



LSI
Education

Make your Mark with our New Executive English 10 Course

*Enjoy our Special Offer:
Enrol now and receive **10**
FREE General English group
lessons per week!
Conditions apply.*

Schedule for the 10 Free General English Group Lessons: Students will attend either Lessons 1 & 2 or Lessons 3 & 4. Schools will notify students closer to the start dates.

Boston: Lessons 1 & 2: 9:10 AM – 10:50 AM, Lessons 3 & 4: 11:20 AM – 1:00 PM

San Diego and Berkeley: Lessons 1 & 2: 9:10 AM – 10:50 AM, Lessons 3 & 4: 11:10 AM – 12:50 PM

lsi.edu

Terms and conditions

- Special offer applies to students booking our new Executive English 10 Certificate Course at LSI Boston, LSI Berkeley or LSI San Diego.
- Students must meet the minimum English level requirement of B1 (Intermediate).
- This offer is valid only for new bookings received by September 30, 2025 for start dates on September 1st, October 6th, November 03rd & December 01st, 2025. If the start of the course is postponed to 2026, the course fees may be charged using the promotions valid at the time of postponement request.
- The free lessons are valid only for the tuition fees.
- The offer is non-transferable and has no monetary value if not used.
- Free lessons must be taken during the same enrolment period as the Executive 10 course and cannot be postponed or transferred to another booking or individual.
- Promotion applies to new enrolments only, no changes will be permitted to existing enrolments.
- All offers are subject to availability and may change.
- Registration, accommodation placement and course material fees will be charged where applicable.
- In the event of a course change, in countries where changes can be made to enrolments after the start date, regular prices will override this offer.
- All regular Terms & Conditions apply. Please check cancellation policies for each LSI Centre here: <https://www.lsi.edu/en/terms.php>
- These offers cannot be combined with any other offers.
- All other course options and services will be priced as per the published LSI 2025 Pricelist: <https://www.lsi.edu/pdfs/mailling/01/LSI Price list 2025.pdf>